

ARM100

Digital Input/Output Module

**Operational LEDs**

Three large LEDs on top of the ARM100 indicate the module's operating condition. A red 'Power' LED, a yellow 'Running' LED and a green 'Data OK' LED are clearly visible to confirm correct operation.

**Built-in I/O diagnostics**

The status of the inputs and outputs is easily visible on the top of the module. A separate red LED is provided for each input and output. When the ARM100 turns an output 'on', the LED confirms the action. All LEDs work independently to display the condition of each input and output, providing constant feedback of the I/O system.

**Flexible power options**

The ARM100 module was designed to operate from a wide range of DC voltages. Whether you provide only 10 volts or as much as 32 volts, the ARM100 will operate properly. The module can be connected to an existing power supply or, if your system does not have DC power available, a separate, DIN rail-mounted supply is available from METTLER TOLEDO.

**DIN rail-mounted**

Typically, the ARM100 is mounted in a small equipment enclosure or a large control cabinet with other control devices. The ARM100's rugged DIN rail mounting makes installation simple and fast. If your application requires that the ARM100 and its power supply be located in a harsh or hazardous environment, optional stainless steel or explosion-proof/flameproof enclosures are available.

**ARM 100 Digital I/O****Expand scale terminal functionality**

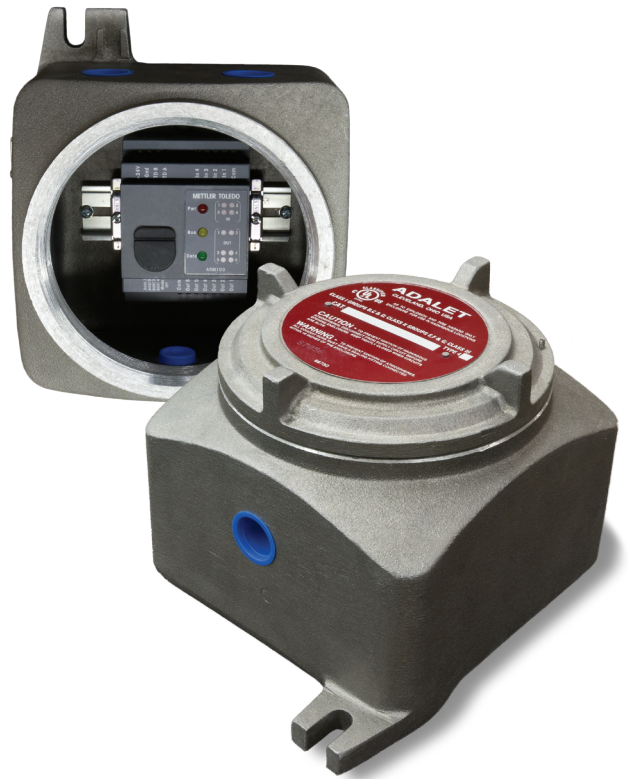
The ARM100 digital I/O module extends the discrete input and output control of METTLER TOLEDO industrial terminals to remote locations. When the number of internal I/O connections available in a terminal is insufficient or if the actual control devices are located a long distance from the terminal, the ARM100 provides a solution. Multiple ARM100s can be connected in a network to increase the total number of inputs and outputs available for installations. The ARM100 is designed for simple DIN rail installation in cabinets or enclosures. An optional stainless steel enclosure permits its use in harsh environments, where protection from contaminants and vigorous washdown are necessary. The ARM100 can also be installed inside an explosion-proof or flameproof enclosure for applications within hazardous (explosive) areas.

ARM100 Discrete I/O Module

Flexible I/O Options for Industrial Scale Terminals

Features and characteristics

- Compact footprint saves valuable mounting space
- Each input and output is easily configured from the scale terminal
- DIN rail mounting makes for fast, easy installation
- Terminal strip connectors provide quick and secure connection of power and signal lines
- Multiple power supply options provide connection flexibility
- Existing UL approval and CE marking facilitate approval of the entire system in which the module is installed
- Safety is assured with a time-out interlock that disables outputs when data communication is lost
- Optional harsh and explosion-proof/flameproof enclosures expand range of working environments
- Can be connected together in a network, reducing the amount of wiring required at installation



Dimensions	Height 2.9" (74mm)	Width 3.9" (100mm)	Depth 2.2" (57mm)
Protection	IP20		
Weight	0.5 kg (1.0 lb)		
Mounting	N35 DIN rail mount, optional wall-mount or hazardous area enclosure		
Power	10-32 VDC power supply required. (MT #64053820 provides 24 VDC at 1.0 A max.)		
Serial Data Input	Multi-drop RS-485 interface; module is addressable from 1 to 15 Parameters: 57,000 baud, 8 data bits, even parity, 1 stop bit		
Discrete Inputs	4 optically-isolated solid state inputs Input voltage range from 5 to 24 VDC (30 VDC at 40 mA maximum) 4 LEDs indicate input status External voltage source and ground required		
Discrete Outputs	6 normally-open, dry contact relays; contact rating 250 VAC or 30 VDC at 1 A maximum Total current not to exceed 3 A 6 LEDs indicate output status External voltage source required		
LED Indicators	Power: ON with external power applied Run: Flashing ON when internal diagnostic tests OK Data: ON when communicating with terminal		
Applicable Terminals	IND560, IND690, IND780		
Agency Approvals	cULus, CE		



Mettler-Toledo, Inc.
1900 Polaris Parkway
Columbus, OH 43240
Phone 1 800 786 0038
Fax 1 614 841 7295

Subject to technical changes
© 06/2010 Mettler-Toledo, Inc.
INDB0007.1E

www.mt.com

For more information