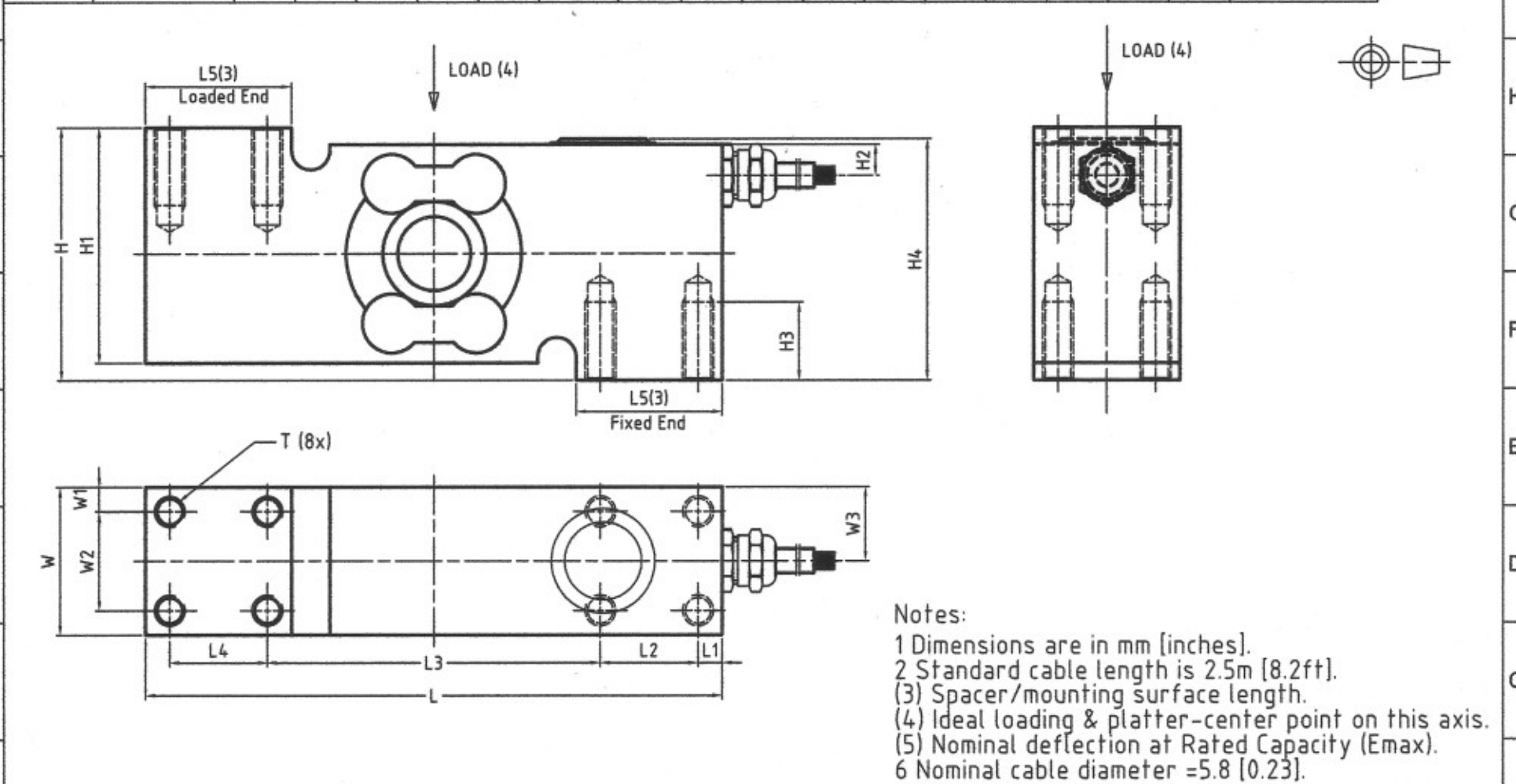


13	12	11	10	9	8	7	6	5	4	3	2	1						
A59910ZZL 72201665A		Dimensions And Locations																
		Model	Capacity	H	H1	H2	H3	H4	L	L1	L2	L3	L4	L5 (3)	T	W	W1	W2
SSH	50-500kg [110-1102 lb]	65 [2.56]	60.6 [2.39]	8 [0.31]	20 [0.79]	61 [2.40]	150 [5.91]	6.3 [0.25]	25.4 [1.00]	86.6 [3.41]	25.4 [1.00]	38 [1.50]	M8	38 [1.00]	6.3 [0.25]	25.4 [1.00]	19 [0.75]	0.25 [0.010]



- Notes:
- 1 Dimensions are in mm [inches].
  - 2 Standard cable length is 2.5m [8.2ft].
  - (3) Spacer/mounting surface length.
  - (4) Ideal loading & platter-center point on this axis.
  - (5) Nominal deflection at Rated Capacity (E<sub>max</sub>).
  - 6 Nominal cable diameter =5.8 [0.23].

Cable termination										Assembly				METTLER TOLEDO															
+Exe: Green    -Exe: Black														MTCN / MTCZ															
+Sig: Red        -Sig: White														SSH 50-500kg Gen.Dim.															
+Sen: Blue      -Sen: Brown														72201665A															
Shield: Yellow(long)										S    A    Y				1:1															
6										5				4				3				2				1			

