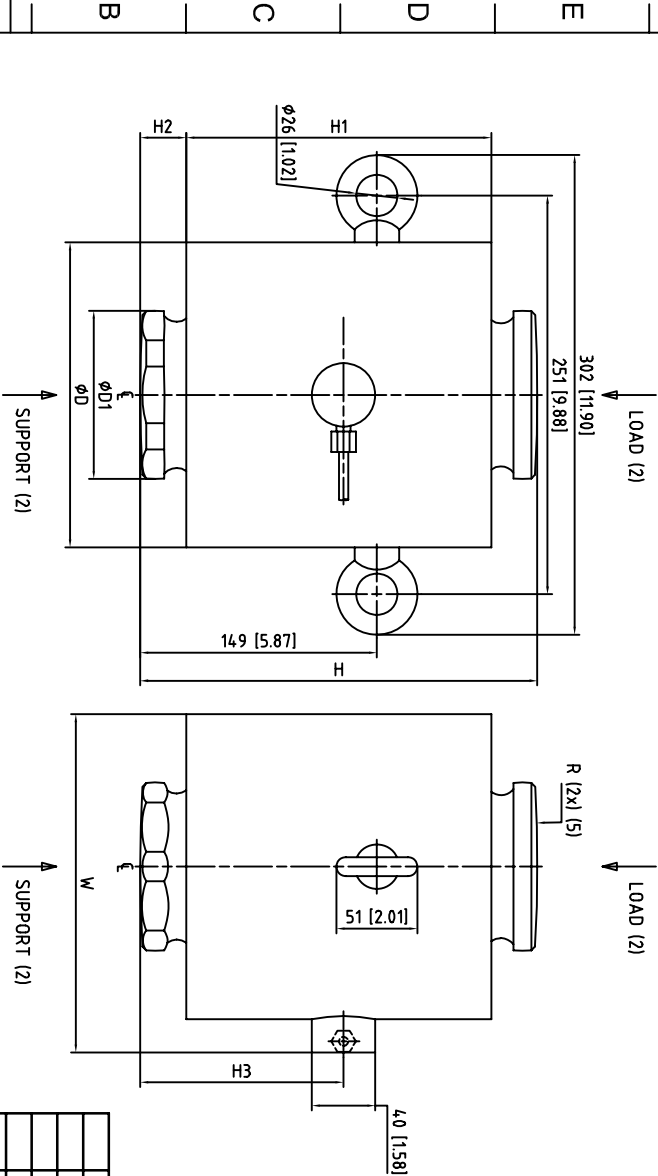
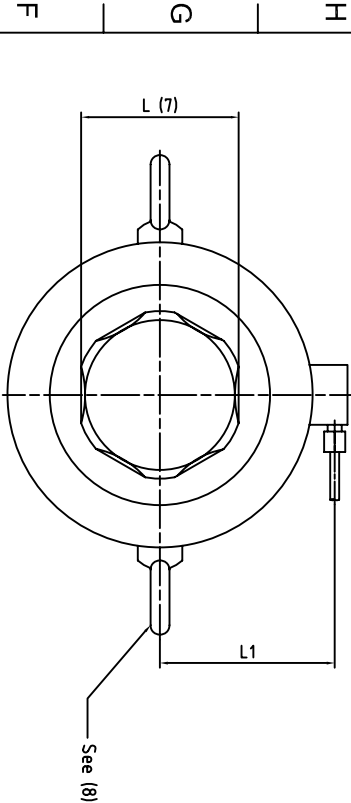


13121110987654321

V175E027L

Capacity	Dimensions And Locations								Standard cable length	Max horiz. travel (6)	Deflection (3)
	D	D1	H	H1	H2	H3	L (7)	L1	R (5)	W	
300t	192	106	250	192	29	128	99.20	110	900	213	0.42
[660 kIb]	[7.56]	[4.17]	[9.84]	[7.56]	[1.14]	[5.04]	[3.91]	[4.33]	[35.4]	[8.39]	[0.017]



Notes:

- 1 Dimensions are in mm [inches] except as indicated.
- (2) Ideal load/support points.
- (3) Nominal deflection at Rated Capacity (E<sub>max</sub>).
- 4 Nominal cable diameter =5.8 [0.23].
- (5) Spherical radius of end buttons.
- (6) Max. allowable horizontal displacement of top button relative to bottom button.
- (7) Width across flats on button of dia. D1.
- (8) Lifting eyes cannot be removed.

Cable termination

- +Exe: Green -Exe: Black
- +Sig: White -Sig: Red
- +Sen: Yellow -Sen: Blue
- Shield: Yellow(long)

<input type="radio"/> Ex
<input type="radio"/> Safety
<input type="radio"/> Metrology
<input type="radio"/> 批准/Appro Mark

13121110987654321

GDL				METTLER TOLEDO	
				MTCN / MTCZ	
				0782(300t) Gen.Dim.(300t)	
				72203541A	
制/VER	设计/ER	设计/ENQ.	设计/RY	设计/DATE	设计/STAGE
制/DRN	Ku_yuJun	设计/APPD			设计/WGT
制/CHK	ku_XueP	设计/AGEN			设计/SCALE
设计/CHK	ku_XueP	设计/DATE	2007-02-01	SHEET: 第 1 页 of 共 1 页	t1