

English

## Installation instructions

MinWeigh Door Micro for XP26/XPE26 & XP56/XPE56 Microbalances

Deutsch

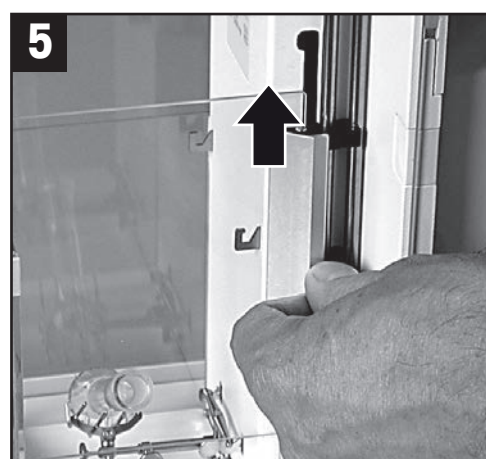
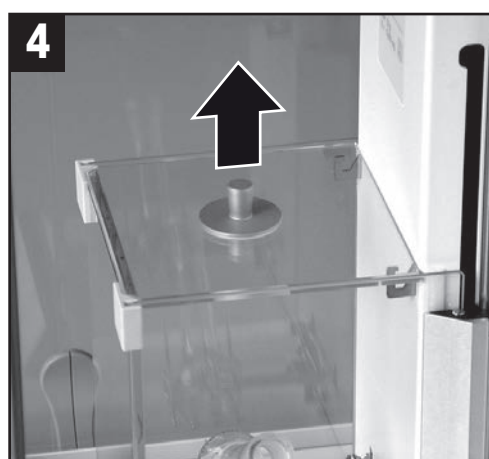
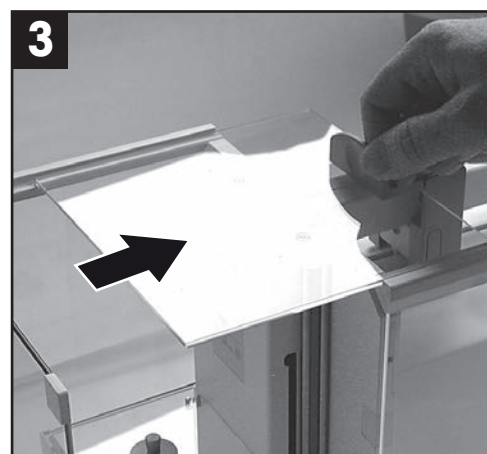
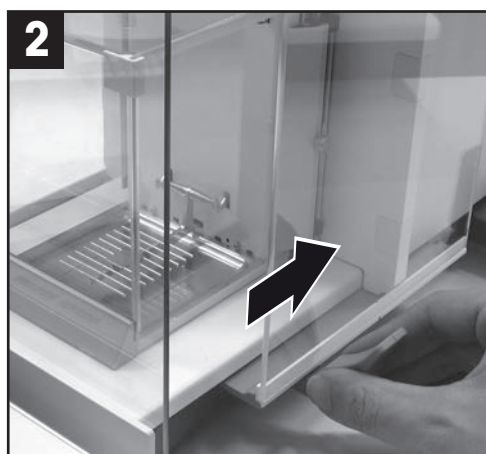
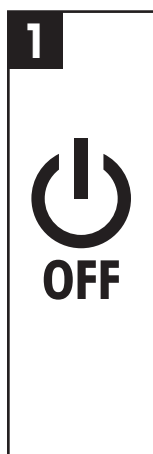
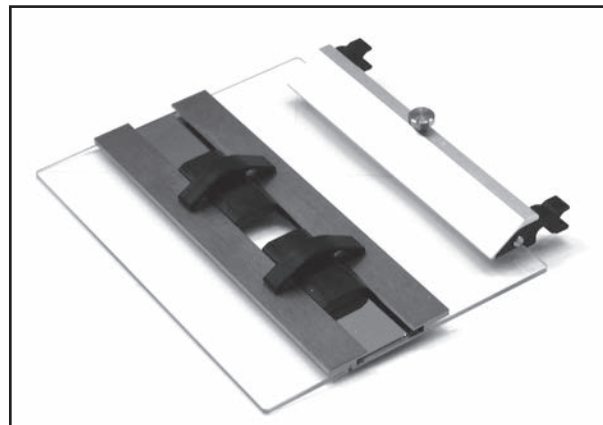
## Montageanleitung

MinWeigh Door Micro für XP26/XPE26 & XP56/XPE56 Mikrowaagen

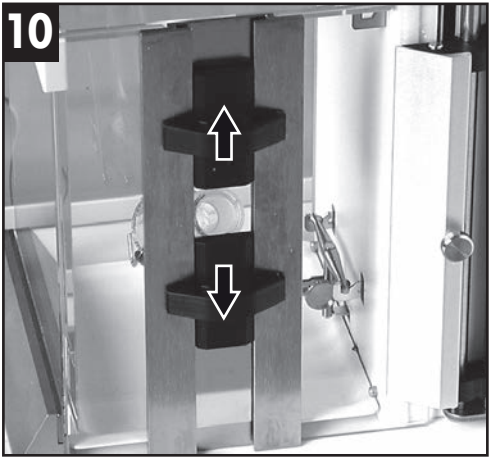
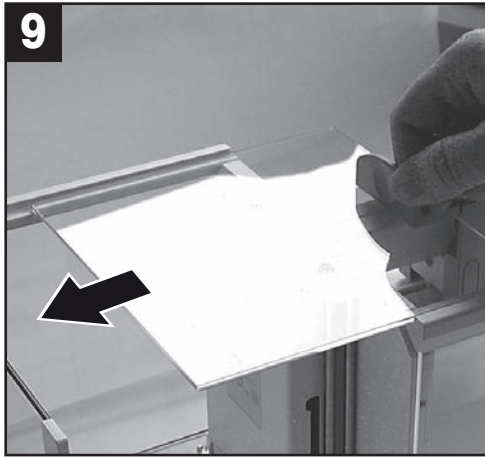
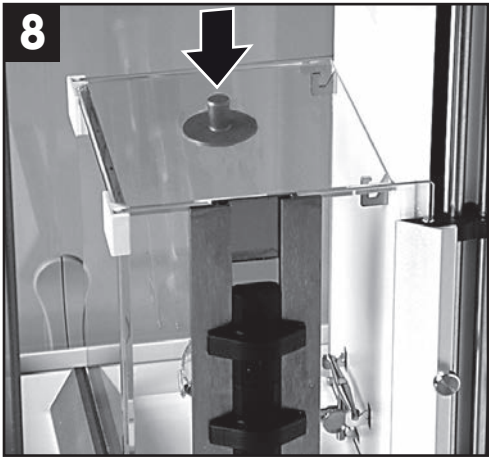
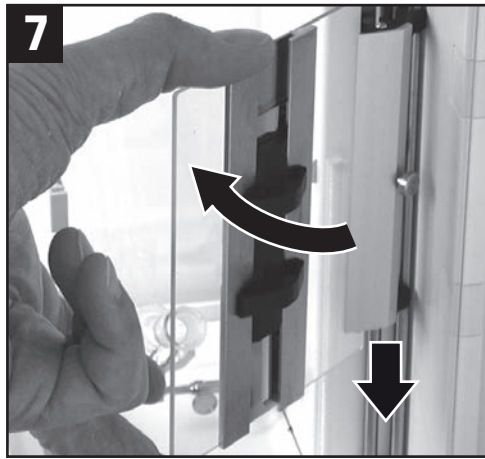
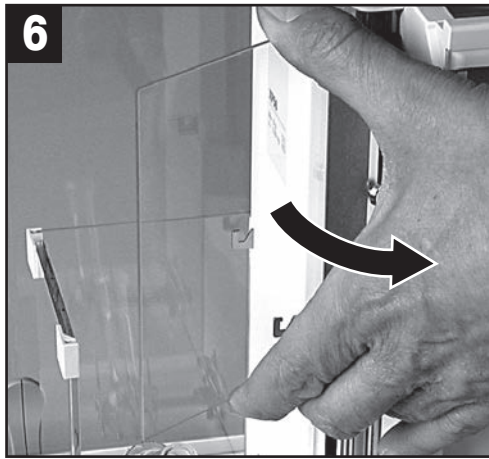
Français

## Notice de montage

MinWeigh Door Micro pour microbalances XP26/XPE26 & XP56/XPE56



METTLER TOLEDO



[www.mt.com/lab-accessories](http://www.mt.com/lab-accessories)

For more information

**Mettler-Toledo AG, Laboratory Weighing**  
8606 Greifensee, Switzerland  
Phone +41 44 944 22 11  
Fax +41 44 944 30 60  
Internet: [www.mt.com](http://www.mt.com)

Subject to technical changes  
© Mettler-Toledo AG 11/2014  
11780838A en, de, fr

