

# Weight Verification System for Traceable Balance Testing



### Proven Traceability

The built-in balance testing application records the weight-specific data and the test results. A detailed test report can be printed out with an external printer to provide full documentation of the performed balance test.



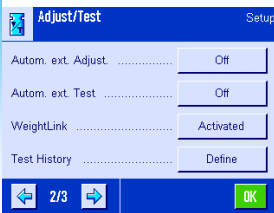
### Enhanced Security

WeightLink™ will only allow the use of a valid test weight. Verification of the test weight prior to use means you can rest assured that your testing procedures are fully compliant.



### Improved Productivity

Automatic data transfer of weight parameters into the balance firmware is much faster than manual data entry and removes the need to check and re-check handwritten entries. Printing out results is quick and easy.



### Easy Setup

WeightLink™ weights are available from 1 g to 5 kg and the data matrix scanner simply plugs into the back of your balance. Your local METTLER TOLEDO representative can advise you on compatible balance firmware versions.



## Seamless and Secure Semi-Automated Weight Check

WeightLink™ is an innovative weight identification system that guarantees full traceability of your balance tests.

Each test weight has a unique identification number (UIN) on the base which 'links' it to its certificate. Calibration and certificate data is stored in a data matrix code (DMC). The dedicated DMC Scanner reads the two codes and sends the information to the balance. The balance firmware validates the certificate and weight data before allowing the balance test to begin.

With this highly efficient system, it is impossible to test using the wrong weight and the risk of errors from manual data entry is completely eliminated.

# The WeightLink™ System

## WeightLink™ Weights

- Calibration certificate included
- Unique identification number on base
- Available individually or in a CarePac®
- Lifetime warranty and guaranteed positive tolerances\*

- High grade stainless steel
- Supplied in an easy-clean plastic box

\*Terms and Conditions can be found under [www.mt.com/signature-line](http://www.mt.com/signature-line)

## WeightLink™ CarePacs®

Weight 1			Weight 2			OIML	ASTM
Nominal weight	Class		Nominal weight	Class			
	OIML	ASTM		OIML	ASTM		
200 g	F2	1	20 g	F1	1	30293475	30293463
200 g	F2	1	10 g	F1	1	30293476	30293464
100 g	F2	1	5 g	E2	1	30293477	30293465
50 g	F2	1	2 g	E2	1	30293478	30293466
2 g	E2	1	0.1 g	E2	1	30293479	30293467
5 g	E2	1	0.2 g	E2	1	30293480	30293468
20 g	F1	1	1 g	E2	1	30293481	30293469
500 g	F2	1	20 g	F1	1	30293482	30293470
1000 g	F2	1	50 g	F2	1	30293483	30293471
2000 g	F2	1	100 g	F2	1	30293484	30293472
2000 g	F2	4	200 g	F2	4	30293485	30293473
5000 g	F2	4	200 g	F2	4	30293486	30293474

## Individual WeightLink™ Weights

Nominal weight	Class E2	Class F1
1 g	30293502	30293561
2 g	30293503	30293562
5 g	30293504	30293563
10 g	30293505	30293564
20 g	30293506	30293565
50 g	30293507	30293566
100 g	30293508	30293567
200 g	30293509	30293568
500 g	30293550	30293569
1 kg	30293551	30293570
2 kg	30293552	30293571
5 kg	30293553	30293572

## WeightLink™ CarePac® Optional 3rd Weights

Nominal weight	OIML Class E2	ASTM Class 1
1 g	30293554	30293487
2 g	30293555	30293488
5 g	30293556	30293489
10 g	30293557	30293490
20 g	30293558	30293491
50 g	30293559	30293492
100 g	30293560	30293493



Our CarePacs® contain just two weights for testing at 5% and 100% of your balance capacity in accordance with USP <41> recommendations. An optional third weight can be selected for customer-specific testing requirements. To find the right CarePac® for your balance, please visit:

[www.mt.com/carepacs](http://www.mt.com/carepacs)

## Calibration eData



All necessary calibration data is stored in a data matrix code (eData) which is linked to the correct weight via the UIN. For convenient balance testing, the code is printed on the WeightLink™ Card or adhered to the weight box.

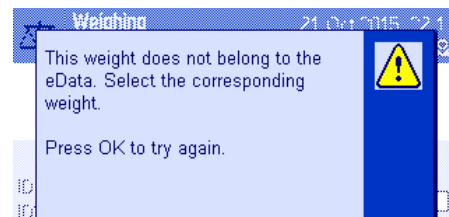
## DMC Scanner



The scanner connects directly to your balance via the RS232 port. Image analysis technology is used to scan the UIN on the weight and the code with the calibration certificate eData.

WeightLink™ DMC Scanner	30268560
WeightLink™ DMC Scanner + RS232 option	30304696

## Balance Firmware



The balance firmware validates the certificate and weight data before allowing the balance test to begin. Please contact your local METTLER TOLEDO representative for more information on compatible balance firmware versions and their availability.



## Mettler-Toledo GmbH

Laboratory Weighing  
CH-8606 Greifensee, Switzerland  
Phone +41 44 944 22 11  
Fax +41 44 944 30 60

© 07/2016 Mettler-Toledo GmbH  
30317425  
Global MarCom 1825 PH/MD

[www.mt.com/weightlink](http://www.mt.com/weightlink)

For more information