

Proven weighing platforms WMH designed for automation



Fast

Typical stabilization times below 500 milliseconds (example for 32 kg platform). 38 update values per second.



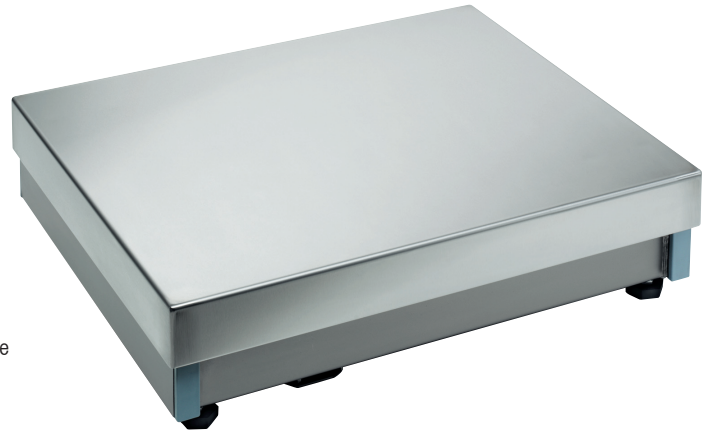
Rugged

Proven METTLER TOLEDO MonoBloc technology and platform mechanism. All platforms and loadplates available in same material as respective K-line platforms, IP66/67 protection, trouble-free cleaning. Overload protection built into platform mechanism.



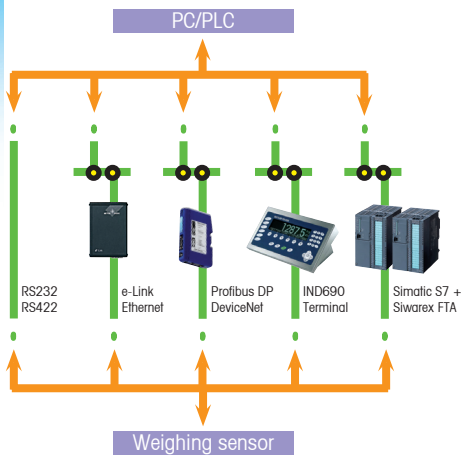
Precise

With a resolution up to 0.1 g you measure every single drop. Thanks to individual adjustability of filter characteristics and stability criteria, the platform can be optimally configured for any environment.



Specially developed for use in automated processes – directly connectable.

Based on a proven product line, tailored for fast filling and weighing, the METTLER TOLEDO WMH-line offers a wide range of platform sizes and accessories from roller tracks to pit frames. Platform sizes and accessories are equal to K-line.



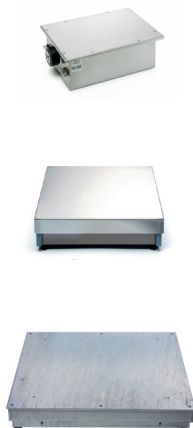
Direct

Direct data transfer via RS232 or RS422 to your process control – without terminal. Simply connect and the platform communicates directly and instantaneously with the control system. Optional communication via accessory modules with Profibus DP, DeviceNet or Ethernet. Can directly be connected to SIWAREX FTA.

WMH-line – the sum of all the advantages:

- Weighing range from 15 kg to 3000 kg
- Directly connects to control systems
- Increases speed and accuracy of filling processes
- Optimizes the use of valuable materials
- Enhances process safety by increasing precision
- Reduces cycle times
- Increases production volume
- Minimizes downtimes

High precision weighing technology for industrial applications



Model	Max. preload*	Max. capacity	Readability	Repeatability (sd)	Linearity type	Platform size (mm)	Height (mm)
WMH15s	7 kg	15 kg	0.1 g	0.05 g	+/- 0.3 g	OEM cell (LxWxH: 252x180x87 mm)	
WMH32s	3 kg	32 kg	0.1 g	0.1 g	+/- 0.4 g	OEM cell (LxWxH: 252x180x87 mm)	
WMHA15s	5 kg	15 kg	0.1 g	0.05 g	+/- 0.3 g	350 x 280	117...130
WMHA32s	3 kg	32 kg	0.1 g	0.1 g	+/- 0.4 g	350 x 280	117...130
WMHB60	29 kg	60 kg	1 g	0.4 g	+/- 1 g	500 x 400	123...148
WMHCC150	63 kg	150 kg	1 g	0.5 g	+/- 2 g	800 x 600	130...155
WMHCC300	147 kg	300 kg	2 g	1 g	+/- 5 g	800 x 600	130...155
WMHCS300	107 kg	300 kg	2 g	1 g	+/- 5 g	800 x 800	115...140
WMHCS600	255 kg	600 kg	10 g	5 g	+/- 10 g	800 x 800	115...140
WMHC300	97 kg	300 kg	2 g	1 g	+/- 5 g	1000 x 800	115...140
WMHC600	235 kg	600 kg	10 g	5 g	+/- 10 g	1000 x 800	115...140
WMHD600	168 kg	600 kg	10 g	10 g	+/- 25 g	1250 x 1000	180...205
WMHD1500	627 kg	1500 kg	20 g	20 g	+/- 50 g	1250 x 1000	180...205
WMHE1500	538 kg	1500 kg	20 g	20 g	+/- 50 g	1500 x 1250	182...207
WMHE3000	1216 kg	3000 kg	50 g	50 g	+/- 100 g	1500 x 1250	182...207
WMHES1500	509 kg	1500 kg	20 g	20 g	+/- 50 g	1500 x 1500	197...222
WMHES3000	1216 kg	3000 kg	50 g	50 g	+/- 100 g	1500 x 1500	197...222

* Maximum preload that may centrally be applied without restricting the weighing range

General technical data

Degree of protection:	IP 66/67
Permissible temperature range:	0 to 40 °C for performance according to accuracy class II, -10 °C to 40 °C for performance according to accuracy class III
Data transmission rate:	Up to 38 update values per second
Tare resp. zero setting range:	From zero to maximum load
Data interfaces:	RS232 and RS422, direct connection – without terminal, Profibus DP, DeviceNet and Ethernet with additional modules (accessories)
Power supply:	10 to 28 V DC
Electrical connection:	19 pin plug
Power consumption:	In operation: 2.5 W

Standard design

- Built-in overload protection
- Scales & load plates available in various materials and finishes (see below)
- Built-in adjustment weight
- Detailed operating instructions
- CD with configuration and visualization software
- Control mode with auxiliary numerical increment (one more decimal place than standard readability)

Accessories

- Various connecting cables
- Connection modules (recommended)
- Various bench stands, roller tracks, approach ramps, pit frames
- Profibus module (Profibus DP), DeviceNet module and Ethernet module
- Startup set
- Digital display (also compatible with IND690 as display)
- Adjustment weights



Available material combinations

	Load cell housing		Scale finish		Load plate finish			
	Stainless steel	Powder coated	Hot galvanized	Stainless steel V2A (AISI 304)	Powder coated	Hot galvanized	Stainless steel V2A (AISI 304)	Stainless steel V4A (AISI 316)
WMH	•							
WMHA	•			•			•	•
WMHB	•	•		•			•	•
WMHCC	•	•		•			•	•
WMHCS	•	•		•		•	•	•
WMHC	•	•		•		•	•	•
WMHD	•		•		•	•	•	•
WMHE	•		•	•*	•	•	•	•
WMHES	•		•	•*	•	•	•	•

* On request: Available with raisable load plate only