

Tunable Diode Laser For H₂S Measurement



Top Performance In H₂S Measurement

An H₂S analyzer for challenging applications, the GPro 500 provides a reliable measurement in catalytic reformers and coke oven gas measurements.



Low Maintenance And Operating Costs

This H₂S gas analyzer is designed to operate in situ without a maintenance-prone conditioning system, reducing the total cost of ownership.



Easy Installation

The GPro 500 is an alignment-free TDL gas analyzer, meaning that the typical challenges of TDL installation and alignment are significantly reduced.



Designed for Challenging Installations

The GPro 500 is configurable, enabling the hydrogen sulfide analyzer's measurement system to be paired with a variety of process adaptations to meet a wide range of installation requirements.



GPro 500 TDL Spectrometer For H₂S Monitoring

The GPro[®] 500 hydrogen sulfide (H₂S) gas analyzer is a unique tunable diode laser spectrometer designed for direct measurement of H₂S in gas streams. It uses a folded-path laser beam design for simple installation and accurate H₂S measurement. This H₂S gas analyzer is ideal for measurement and control applications such as H₂S control in catalytic reformers and coke gas measurements. These tunable diode laser gas analyzers offer a precise, reliable, and fast measurement in critical applications. The GPro 500 H₂S gas analyzer is installed in situ, so you get a quick response without the need to extract and condition a sample. This offers a reliable and cost-effective alternative to technologies that require extraction and conditioning of gases.

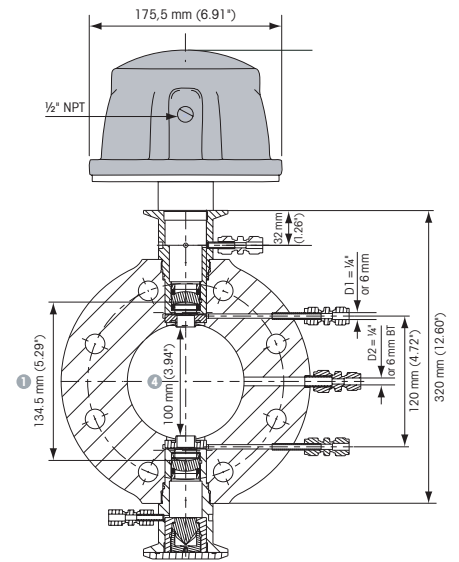
Technical data of the H₂S Analyzer GPro 500¹⁾:

Gas measured	Hydrogen sulfide
Lower detection limit	20 ppm-v
Measurement range	0–50 %
Accuracy	2 % of reading or 20 ppm, whichever is greater
Linearity	Better than 1 %
Resolution	20 ppm-v
Drift	Negligible (< 2 % of measurement range between maintenance intervals)
Sampling rate	1 second
Response time (T90)	H ₂ S in N ₂ 1 % to 0 % in < 4 seconds
Repeatability	±0.25 % of reading or 100 ppm-v H ₂ S (whichever is greater)
Process pressure range	0.8 bar–2 bar (abs)/11.6 psig–29 psig (abs)
Process temperature range	0–250 °C (32–482 °F) standard; 0–600 °C (32–1112 °F) with additional thermal barrier; 0–150 °C (32–302 °F) with PFA or PTFE filter
Effective path length	50 mm–800 mm, depending on adaption

1) Under standard conditions (1m eff. path length, standard p,T, no dust or particulates).

GPro is a registered trademark of the METTLER TOLEDO Group.

► www.mt.com/H2S-Analyzer



Example installation of Wafer Cell Adaption for GPro 500.



METTLER TOLEDO Group

Process Analytics
Local contact: www.mt.com/pro-MOs

Subject to technical changes
© 10/2021 METTLER TOLEDO
All rights reserved. PA2103en A
MarCom Urdorf, CH

www.mt.com/pro

For more information