

Adaptable Flow-Through Housing For Chemical and Wastewater Installations



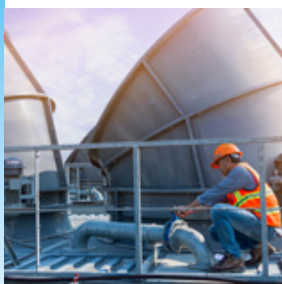
High Flexibility

The InFlow 76Xe modular housing is designed for dependable in-line sensor mounting in pipes in chemical processing.



Optimal Positioning of 120 mm Sensors

Achieve ideal positioning using the InFlow 76Xe, as it correctly positions sensors in tight confines of narrow pipes and slip streams.



Efficient & Safe Installation

InFlow 76Xe housings are designed to be safely and easily installed in flow-through locations for fast commissioning of measurement points.



Fits a Wide Range of Sensors

The InFlow 76Xe is a versatile flow-through housing designed for use with pH, DO, CO₂, conductivity and turbidity sensors. It allows for a variety of sensor insertion lengths to meet process needs.



InFlow 761e/762e Housing For Common Applications

The InFlow™ 76Xe offers a wide range of configurations for various pipe connections and diameters. Multiple process and housing connections are also available to accommodate common chemical or wastewater environments.

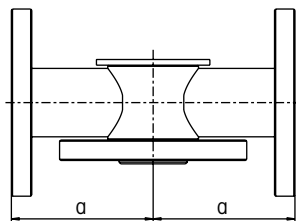
See more about InFlow 761e/762e at:

► www.mt.com/inflow

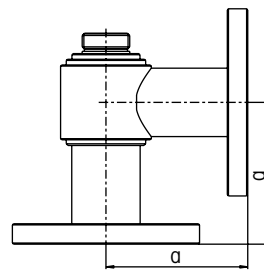
Technical Data of InFlow 761e/762e

Operation	Flow-Through
Sensors Accepted	pH & ORP, Dissolved oxygen, CO ₂ , Conductivity, Turbidity
Wetted Parts	Stainless steel 316L
O-Ring	761e: N/A 762e: Viton® FDA
Sensor Fitting	InTrac™ 7XX, InFit™ 76X
Temperature Range	0–140 °C/32–284 °F
Pressure Rating	761e: 16 bar @ 140 °C 232 psig @ 284 °F 762e: 1 bar @ 140 °C 6 bar @ 80 °C 14.5 psig @ 284 °F 87 psig @ 176 °F
Insertion Lengths	25 mm–375 mm

Dimensional drawings InFlow 76Xe Series



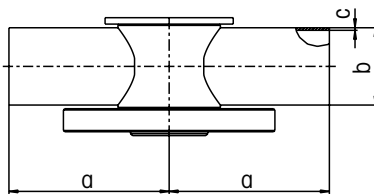
180° version



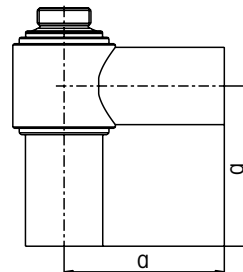
90° version

Flow-through housing with flange connection

	a
InFlow 761, 1.4404/316L	125 mm/4.92"
InFlow 762, PVDF	150 mm/5.91"



180° version



90° version

Flow-through housing with welded connection

	a	b	c
InFlow 761, 1.4404/316L			
DN25	125 mm/4.92"	33.7 mm/1.33"	2.0 mm/0.08"
DN50	125 mm/4.92"	60.3 mm/2.37"	2.0 mm/0.08"
InFlow 762, PVDF			
DN25	150 mm/5.91"	32 mm/1.26"	2.4 mm/0.09"
DN50	150 mm/5.91"	63 mm/2.48"	3.0 mm/0.12"

Viton is a registered trademark of DuPont Performance Elastomers LLC.

METTLER TOLEDO Group

Process Analytics

Local contact: www.mt.com/contacts

www.mt.com/pro

For more information

Subject to technical changes

© 03/2022 METTLER TOLEDO. All rights reserved

PA2137en A

MarCom Urdorf, Switzerland