

Great Performance and Easy Handling Intelligent Turbidity Sensors

Turbidity Sensors InPro 86X0ie



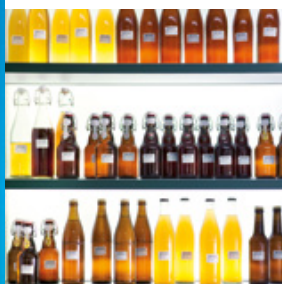
Compliant for Beverage Production

The sensor design is compliant for beverage production. It meets EHEDG and PED requirements with its smooth surface and the sealless window design.



Fast, Easy Startup and Commissioning

The Intelligent Sensor Management (ISM) Plug and Measure feature ensures fast, error-free startup and commissioning of the sensor.



Ensure Consistent Product Quality

Due to the multi-point factory calibration, the sensor offers more accurate readings. This results in consistent quality of the end product.



Rigorous Testing

The InPro 86X0ie turbidity sensor has successfully passed a 10-year simulated lifetime test for thermal shocks and chemical resistance.



Turbidity and Color Measurement

For better visibility into your processes

The InPro 8610ie and InPro 8630ie turbidity sensors provide high measurement accuracy due to multi-point calibration and immunity to background color changes.

Intelligent Sensor Management (ISM®) provides greater confidence in measurement performance. ISM window fouling and humidity diagnostic tools keep you informed on sensor condition.

The sensors are specially designed for turbidity (and color) measurement in brewery, beverage, dairy or reclaimed water applications.

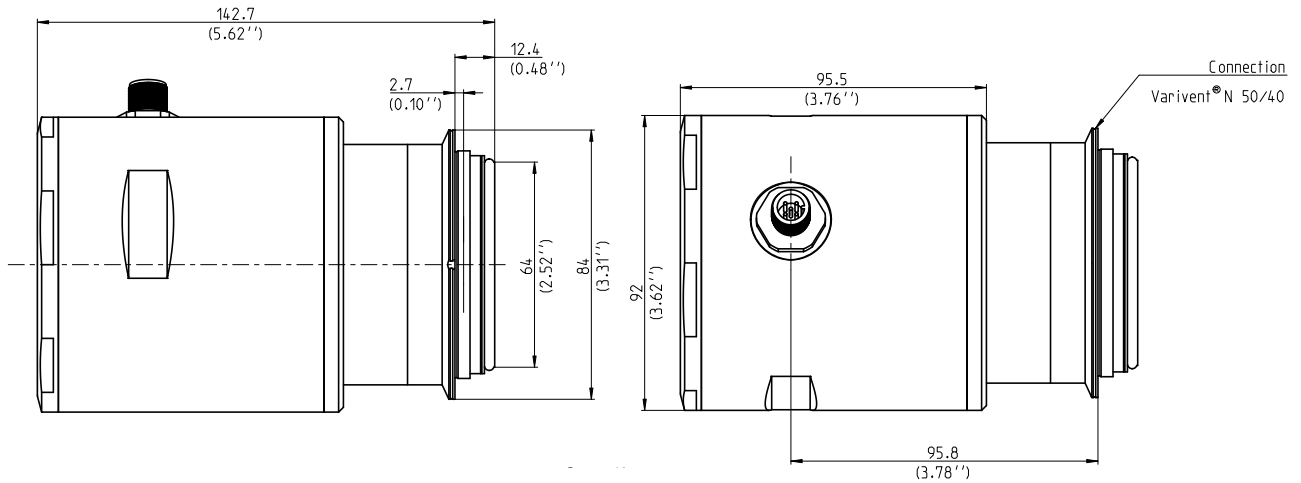
See more about InPro 8610ie/InPro 8630ie at
www.mt.com/InPro8600

Technical data of the InPro 8610ie/InPro 8630ie

Measuring principle	Turbidity: Scattered light (25°/90°*) Color*: Absorption measurement
Process pressure	Up to 16 bar
Process temperature	- 10 °C to 120 °C (max. 150 °C peak for 15 mins during SIP or CIP cleaning)
Measuring range	InPro 8610ie Turbidity: 0 to 250 EBC (0 to 1000 FTU) InPro 8630ie Turbidity: 0 to 1000 EBC (or 0 to 4000 FTU) Color: 0 to 50 EBC color
Units	FTU, NTU, EBC, EBC Color, g/l, mg/l, ppm, ASBC, %T, ICUMSA, % Foul*
Process connection	Tuchenhagen-VARINLINE Type N50/40
Wetted parts	Hastelloy C22; sapphire windows
Surface finish	N6/R _a 32 (R _a ≤ 0.8 μm/32 μin)
O-ring (flange, wetted)	EPDM (compliance to FDA and EN-1935/2004 requirements)
Communication	Digital (RS 485)
Protection	IP 66 (protection against dust and water ingress)

* InPro 8630ie only

▶ www.mt.com/InPro8600



Dimensions of the 8610ie/InPro 8630ie

ISM and InPro are trademarks of the METTLER TOLEDO Group.
All other trademarks are the property of their respective owners.

METTLER TOLEDO Group

Process Analytics
Local contact: www.mt.com/contacts

Subject to technical changes
10/2021 © METTLER TOLEDO. All rights reserved.
PA2003en B
MarCom Urdorf, CH

www.mt.com/pro

For more information

