

B86251E0E

SAFE AREA

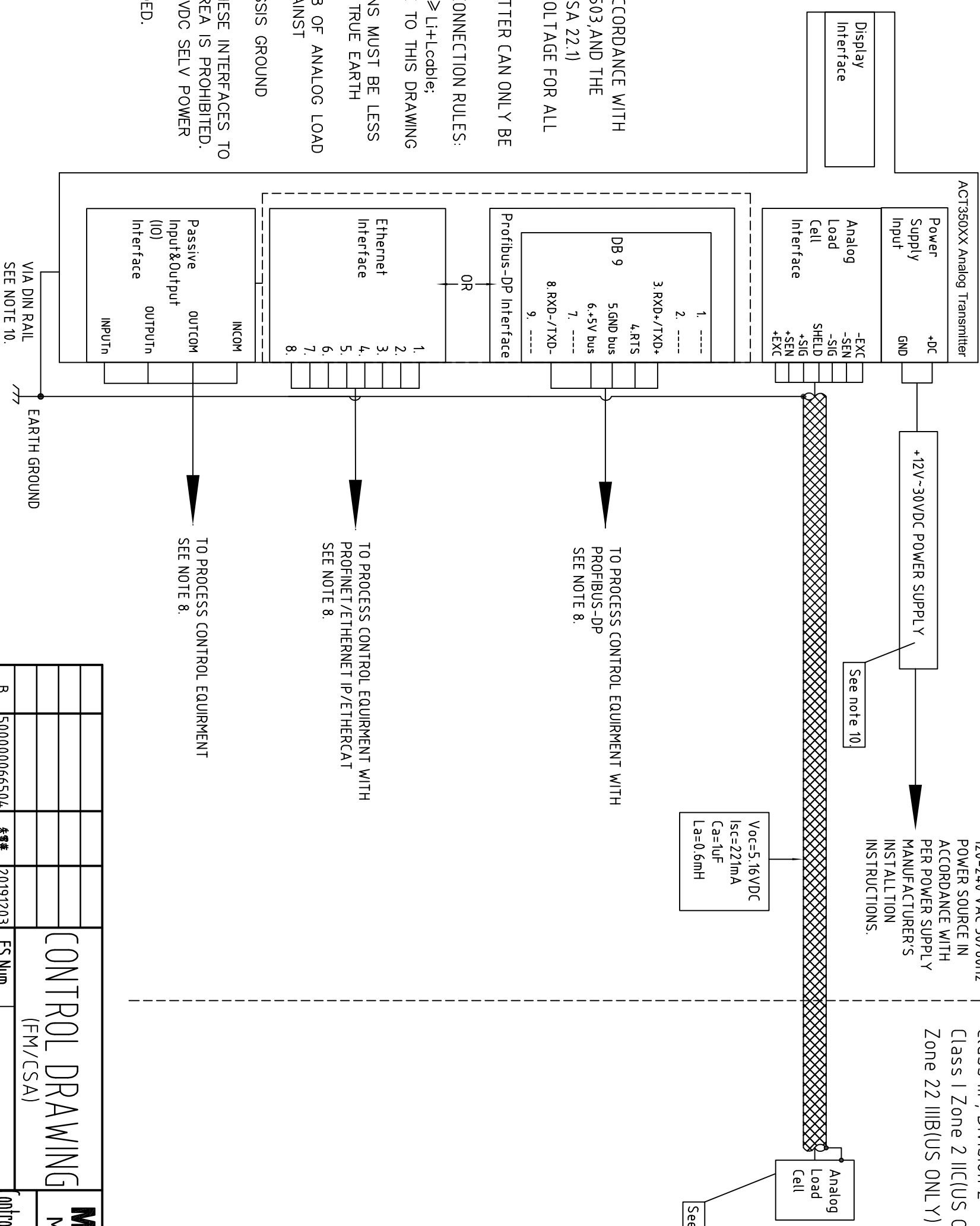
HAZARDOUS AREA

$-10^{\circ} \leq T_a \leq +4.0^{\circ}$

Class I, Division 2, Group A,B,C,D  
 Class II, Division 2, Group F,G  
 Class III, Division 2  
 Class I Zone 2 IIC(US ONLY)  
 Zone 22 IIIB(US ONLY)

120-240 VAC 50/60HZ  
 POWER SOURCE IN  
 ACCORDANCE WITH  
 PER POWER SUPPLY  
 MANUFACTURER'S  
 INSTALLATION  
 INSTRUCTIONS.

$V_{oc}=5.16VDC$   
 $I_{sc}=221mA$   
 $C_a=1\mu F$   
 $L_a=0.6mH$



NOTES:

1. INSTALLATION MUST BE IN ACCORDANCE WITH ANSI/NFPA 70 ARTICLES, 500-503, AND THE CANADIAN ELECTRICAL CODE(CSA 22.1)
2. MAXIMUM NONHAZARDOUS VOLTAGE FOR ALL COMPONENTS IS 30VDC.
3. ACT350XX ANALOG TRANSMITTER CAN ONLY BE LOCATED IN SAFE AREA.
4. NONINCEIDIVE FIELD CIRCUIT CONNECTION RULES:  
 $V_{max} \geq V_{oc}; C_a \geq C_{it}+C_{cable}; L_a \geq L_{it}+L_{cable};$   
 5. NO CHANGES MAY BE MADE TO THIS DRAWING WITHOUT AGENCY APPROVAL.
6. ALL GROUNDING CONNECTIONS MUST BE LESS THAN 1 OHM RESISTANCE TO TRUE EARTH GROUND.
7. THE ALLOWABLE QUANTITY 8 OF ANALOG LOAD CELL SHALL BE CHECKED AGAINST NOTE 4.
8. -EXC IS NOT TIED TO CHASSIS GROUND INTERNALLY.
9. DIRECT CONNECTION OF THESE INTERFACES TO EQUIPMENT IN HAZARDOUS AREA IS PROHIBITED.
10. LISTED/RECOGNIZED 12~30VDC SELV POWER SUPPLY.
11. DIN RAIL MUST BE GROUNDED.

TO PROCESS CONTROL EQUIPMENT  
 SEE NOTE 8.

TO PROCESS CONTROL EQUIPMENT WITH  
 PROFIBUS-DP/ETHERNET IP/ETHERCAT  
 SEE NOTE 8.

TO PROCESS CONTROL EQUIPMENT WITH  
 PROFIBUS-DP  
 SEE NOTE 8.

VIA DIN RAIL  
 SEE NOTE 10.

EARTH GROUND

|                                  |           |
|----------------------------------|-----------|
| <input type="radio"/>            | Metrology |
| <input type="radio"/>            | Safety    |
| <input checked="" type="radio"/> | Ex        |

|                                    |     |              |                       |   |           |
|------------------------------------|-----|--------------|-----------------------|---|-----------|
| <b>CONTROL DRAWING</b><br>(FM/CSA) |     |              |                       | <b>CONTROL DRAWING</b><br>ACT350XX Analog Transmitter |           |
| B                                  |     | 500000066504 |                       | 20191203  |           |
| 设计/DRN                             | 张建华 | 审核/APPD      | 吴宇博                   | 日期/DATE   | 2016-12-1 |
| 修改/CHECK                           | 张勇军 | 批准/AGEN      | Bill                  | 日期/DATE   | 2016-12-1 |
| 立文/MFG                             |     |              |                       |   |           |
| FS Num.                            |     |              | SHEET: 第 1 页 of 共 1 页 |   |           |
| 重印/WGT                             |     |              | 比例/SCALE              |   |           |
| 1:1                                |     |              | 30315298B             |   |           |

**NOTICE**  
 THIS ITEM USED IN:  
 AGENCY APPROVED PRODUCT  
 O.E.M. PRODUCT  
 DO NOT CHANGE DOCUMENT  
 WITHOUT APPROPRIATE APPROVAL

**METTLER TOLEDO**  
 MTCN / MTCT / MTCZ

Control Drawing, ACT350XX Analog Transmitter

30315298B