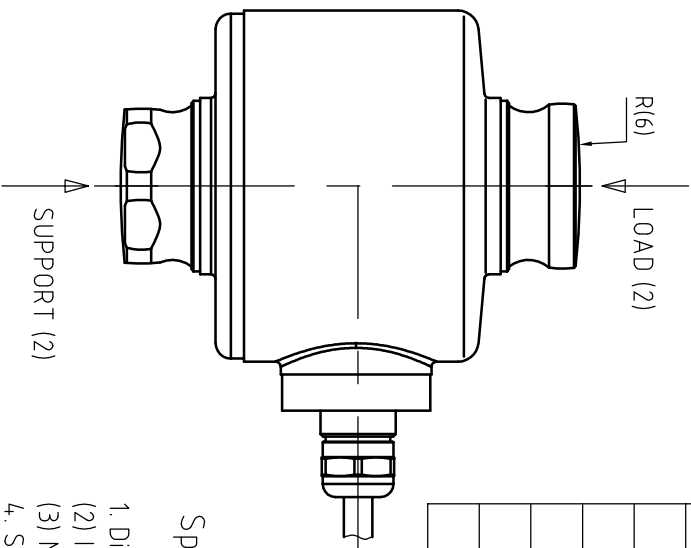
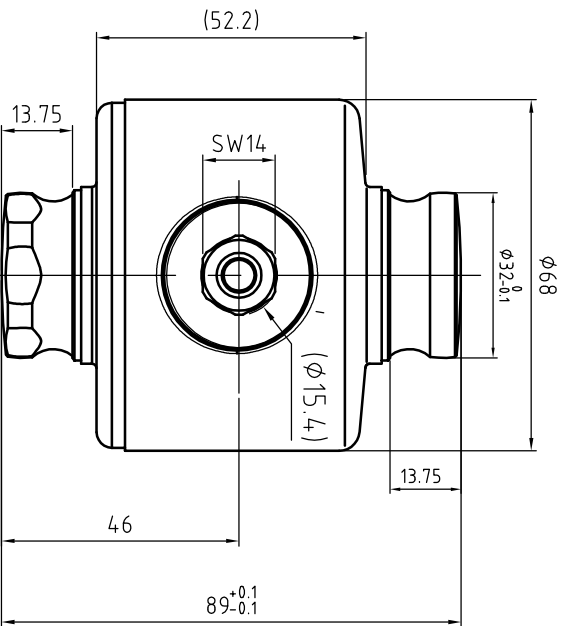


13 12 11 10 9 8 7 6 5 4 3 2 1

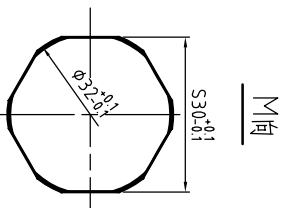
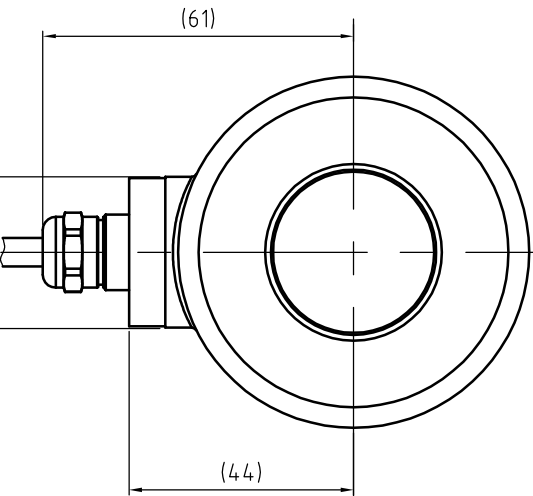
V0190720E



Specifications

1. Dimensions are in mm.
- (2) Ideal load/support points.
- (3) Nominal deflection at Rated Capacity (E_{max}).
4. Standard cable length = 12m.
Optional cable length = 20m.
5. Nominal cable diameter = $\phi 5.2$ mm
- (6) Spherical radius of end buttons.
- (7) Max. allowable horizontal displacement of top button relative to bottom button.
8. Cable termination
+Exc: Green -Exc: Black
+Sig: White -Sig: Red
Shield: Yellow

| Capacity | R (6) | Max horiz. travel (7) | Deflection (3) |
|----------|-------|-----------------------|----------------|
| 5t | 100 | 8 | 0.25 |
| 7.5t | 14.0 | 8 | 0.25 |
| 10t | | 7.5 | 0.25 |
| 15t | | 7 | 0.25 |
| 22.5t | 180 | 5 | 0.25 |



GDL Drawing

METTLER TOLEDO
MTCN / MTCZ

GDL SLC611 LOAD CELL

| 设计/DRN | 校核/CHK | 审核/APPD | 批准/AGEN | 日期/DATE | 数量/WGT | 比例/SCALE |
|--------|--------|---------|---------|---------|--------|----------|
| S | A | N | | | | 1:1 |

30220610A

合格证/Appro Mark

☐ Metrology

☐ Safety

☐ Ex