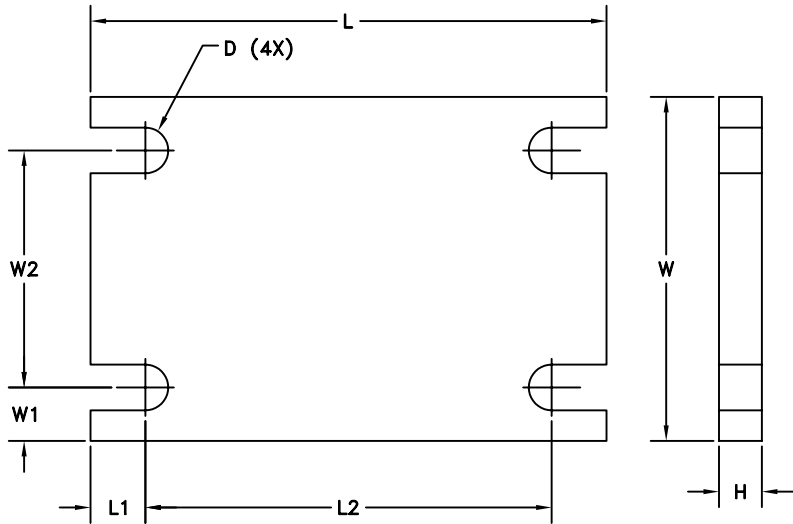


CAPACITY	DIMENSIONS AND LOCATIONS								DEFLECTION (2)
	D	H	L	L1	L2	W	W1	W2	
551-11023lb [250-5000kg]	0.531 [13.50]	0.50 [12.7]	6.00 [152.4]	0.64 [16.2]	4.72 [120.0]	4.00 [101.6]	0.62 [15.8]	2.76 [70.0]	8.36E-7 in/lb [4.68E-5] mm/kg
22046lb [10000kg]	0.709 [18.00]	1.00 [25.4]	8.00 [203.2]	0.75 [19.0]	6.50 [165.2]	4.75 [120.7]	0.75 [19.0]	3.25 [82.7]	1.12E-6 in/lb [6.27E-5] mm/kg

- NOTES:
1. DIMENSIONS ARE IN INCHES [mm].
 - (2). REDUCTION IN DIMENSION H PER lb [kg] APPLIED TO THE ENTIRE PAD AREA.
 3. FABREEKA IS A SYNTHETIC RUBBER IMPREGNATED FABRIC.
 4. OPERATING TEMPERATURE LIMITS: -65F [-55C] TO 200F [95C].
 5. DAMPING CONSTANT = 0.14.
 6. COMPRESSIVE STRENGTH 12000 PSI [82.7 MPa].



ORDER INFORMATION	
SALES ORDER # _____	
P.O. # _____	
CUSTOMER _____	
CAPACITY _____	

METTLER TOLEDO	
THIS DOCUMENT CONTAINS CONFIDENTIAL AND PROPRIETARY INFORMATION. IT IS NOT TO BE REPRODUCED OR TRANSMITTED IN ANY FORM OR BY ANY MEANS, ELECTRONIC OR MECHANICAL, WITHOUT THE WRITTEN AUTHORIZATION OF METTLER-TOLEDO, INC. COPYRIGHT 2004 METTLER-TOLEDO, INC.	
NAME GENERAL DIMENSIONAL LAYOUT	
REV	01/05
FABREEKA PADS FOR 0970 RINGMOUNT	
RCM	01/05
REV	
TB601178	

MATERIAL DESCRIPTION		MATERIAL SPEC.	
SCALE INCHES [mm]		DO NOT SCALE DRAWING	
UNITS .XXX=±0.02 .XX=±0.05 .X=±0.13		FRACTION	
TOLERANCES UNLESS OTHERWISE SPECIFIED		FRACTION	
.XXX=±0.005 .XX=±0.013 .X=±0.025		FRACTION	
PULLING/WEAVING		FRACTION	
SUPERSEDED BY		FRACTION	
DATE RELEASE NO.		FRACTION	

DATE	_____
C.A. NO.	_____
AGENCY	_____
APPROVED	_____
BY	_____
DESCRIPTION	_____
RECORD OF CHANGES	_____
NO.	_____
ZONE	_____