

InSite[®] SL

Configuration Tool

User's Guide

© METTLER TOLEDO 2011

No part of this manual may be reproduced or transmitted in any form or by any means, electronic or mechanical, including photocopying and recording, for any purpose without the express written permission of METTLER TOLEDO.

U.S. Government Restricted Rights: This documentation is furnished with Restricted Rights.

Copyright 2011 METTLER TOLEDO. This documentation contains proprietary information of METTLER TOLEDO. It may not be copied in whole or in part without the express written consent of METTLER TOLEDO.

METTLER TOLEDO reserves the right to make refinements or changes to the product or manual without notice.

COPYRIGHT

METTLER TOLEDO® and InSite® are registered trademarks of Mettler-Toledo, LLC. All other brand or product names are trademarks or registered trademarks of their respective companies.

METTLER TOLEDO RESERVES THE RIGHT TO MAKE REFINEMENTS OR CHANGES WITHOUT NOTICE.

Introduction

This documentation is provided solely as a guide for individuals who have received Technical Training in servicing the METTLER TOLEDO terminal & software products.

For information, locate the closest authorized METTLER TOLEDO representative at the METTLER TOLEDO website, www.mt.com

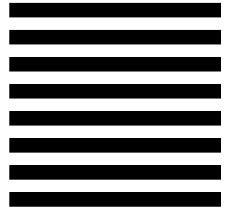
This documentation correctly describes the operation and functionality of the InSite® software versions as follows:

| Revision | Date |
|-----------------|-------------|
| 1.1.05 | March 2012 |
| 1.1.02 | August 2011 |
| | |
| | |
| | |
| | |

FOLD THIS FLAP FIRST



NO POSTAGE
NECESSARY
IF MAILED IN THE
UNITED STATES



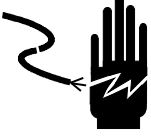

POSTAGE WILL BE PAID BY ADDRESSEE

Mettler-Toledo, LLC
Quality Manager - MTWT
P.O. Box 1705
Columbus, OH 43216
USA

Please seal with tape

PRECAUTIONS

- READ this manual BEFORE operating or servicing this equipment and FOLLOW these instructions carefully.
- SAVE this manual for future reference.

| | |
|---|--|
|  | <p style="text-align: center;"> WARNING!</p> <p>FOLLOW ALL WARNINGS AND PRECAUTIONS DOCUMENTED IN THE MANUALS FOR THE CONNECTED EQUIPMENT BEFORE PREFORMING ANY SERVICE. FAILURE TO DO SO COULD RESULT IN BODILY HARM AND/OR PROPERTY DAMAGE.</p> |
|---|--|

Contents

| | | |
|------------------|--|------------|
| Chapter 1 | Installation | 1-1 |
| | System Requirements | 1-1 |
| | O/S requirements | 1-1 |
| | Hardware requirements | 1-1 |
| | Software requirements | 1-1 |
| | Installation Procedure | 1-2 |
| | After Installation is Complete | 1-2 |
| | Support Information | 1-2 |
| Chapter 2 | InSite SL Tool | 2-1 |
| | InSite Overview | 2-1 |
| | Supported Devices | 2-2 |
| | Starting the software | 2-2 |
| | Screen layout overview | 2-3 |
| | Toolbar Tabs | 2-3 |
| | Product Selection Frame | 2-4 |
| | Tree Frame | 2-4 |
| | Configuration Frame | 2-5 |
| | System line | 2-6 |
| Chapter 3 | InSite SL Save/Load | 3-1 |
| | Save | 3-1 |
| | Save Procedure | 3-1 |
| | Using Save files | 3-4 |
| | Load | 3-4 |
| | Load Procedure | 3-5 |
| Chapter 4 | InSite SL Connection Settings | 4-1 |
| | Settings | 4-1 |
| | Changing Settings | 4-1 |
| | Terminal Connection types | 4-3 |

Chapter 1

Installation

This section contains general information on system requirements and the installation procedure and its options.

System Requirements

This section contains details on the system requirements and recommendations, including details on the required hardware and other software needed to run InSite® SL.

O/S requirements

InSite SL runs on any of the following Windows operating systems:

- Microsoft® Windows® XP Professional or Windows 7 Professional (32 bit version).

Hardware requirements

Hardware requirements match those of your chosen O/S. In addition, InSite requires:

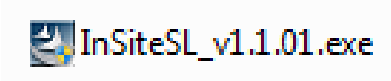
- ~ 50 MB free disk space required (not including .NET)
- Appropriate space for configuration file storage

Software requirements

- Microsoft® .Net Framework Version 2.0 (or 3.5, which contains 2.0)

Installation Procedure

To install the InSite software application manually, you must launch the InSite SL setup – for example:



After Installation is Complete

Once the installation process is complete, the InSite SL application should be installed on the system. It can be accessed via **Start | Program Files | Mettler Toledo | InSiteSL**. A shortcut icon is also placed on the desktop for quick access.

Support Information

Please contact your local Mettler-Toledo, LLC service office for support.

Chapter 2

InSite SL Tool

The InSite® SL application is used to manage industrial terminal product configuration information. This service tool is used to save and restore the setup parameters for the several of the IND and ICS terminals from a PC. Only one instance of this application may be running at a time.

InSite Overview

The InSite Configuration Tool is an application for the PC that can be used to save the values of various terminal setup parameters and restore them at a later date, or to copy configurations into other terminals. A typical screen from the InSite Configuration Tool is shown in Figure 2-1.

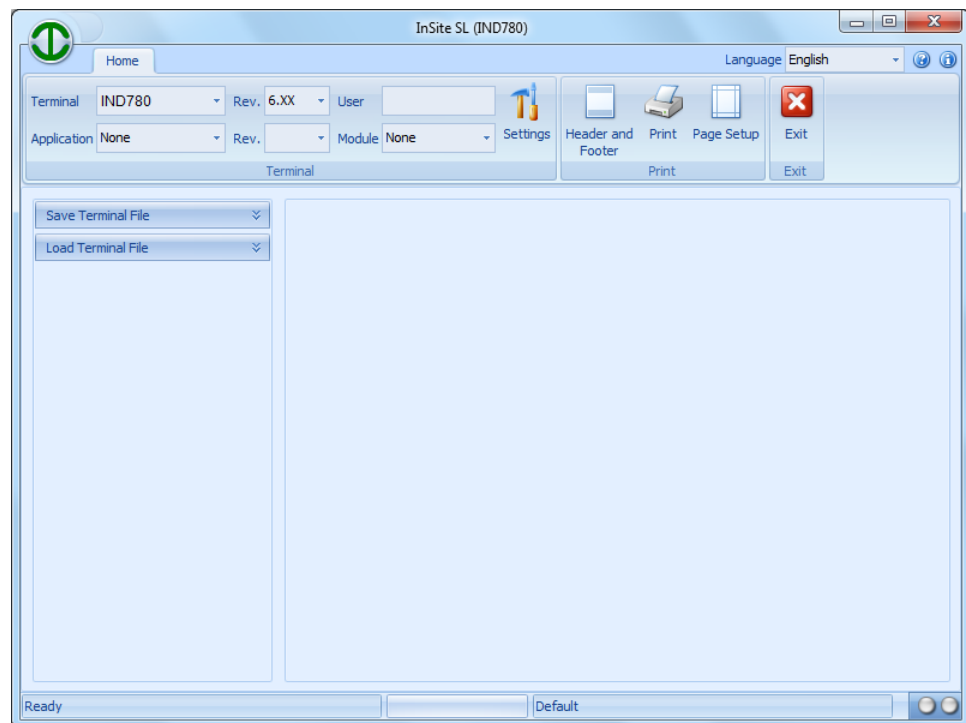


Figure 2-1: Configuration Tool

The Configuration Tool is used to perform the following:

- Extract the current configuration from a connected terminal and save it as a file locally
- Load a saved configuration into a connected terminal

Supported Devices

The following terminals are supported by the current version of InSite:

Table 2-1: Supported Terminals

| Model Name | Connection type |
|---------------------|------------------|
| ICS429/439 | Serial |
| ICS449/469 | Serial |
| ICS629/639 | Serial |
| ICS649/669 | Serial |
| IND130 | Serial |
| IND131/IND331 | Serial |
| IND135 | Serial, USB |
| IND560x | Serial, Ethernet |
| IND560, IND560fill | Serial, Ethernet |
| IND560 PDX | Serial, Ethernet |
| IND780, IND780drive | Ethernet |
| IND890 | Ethernet |

Connection to the terminal is restricted by the individual terminal's hardware requirements. Please refer to the specific device's technical documentation for any information regarding wiring and use.

Starting the software

Starting InSite application is similar to starting any other Windows® application. Select the menu item **Start | Programs | Mettler Toledo | InSiteSL | InSiteSL** to launch the application.

The desktop shortcut can also be used to launch the application:



Figure 2-2: InSite Desktop Shortcut Icon

Screen layout overview

Figure 2-3 gives an overview of layout of InSite SL and indicates the various areas used in the tool.

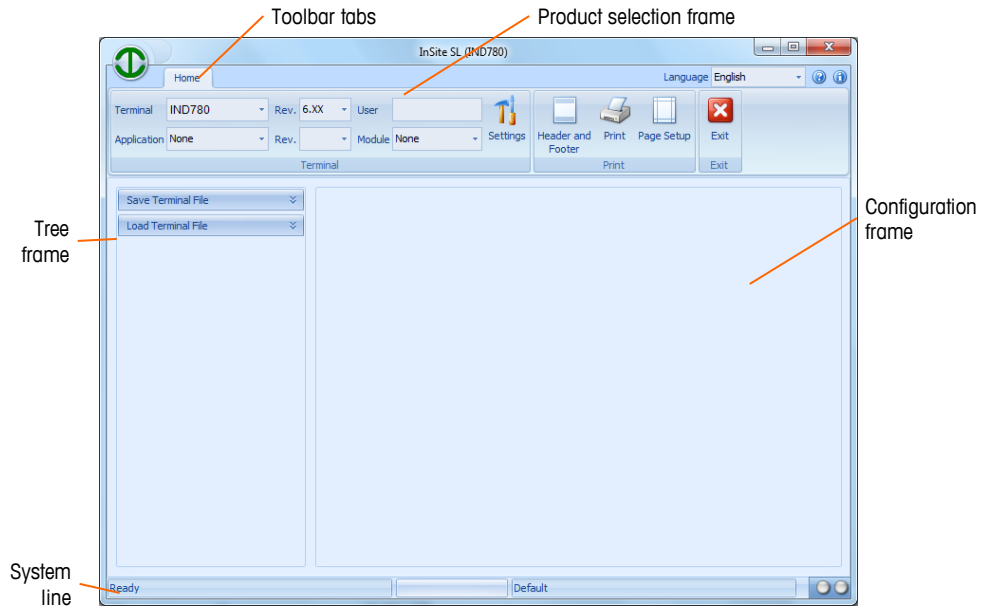


Figure 2-3: Configuration Tool Overview

The following sections describe each element of the tool, and its purpose.

Toolbar Tabs

The toolbar tabs (Figure 2-4) allow selection of different tool button frames. The home tab contains **File**, **Terminal**, and **Connection** tool button frames.

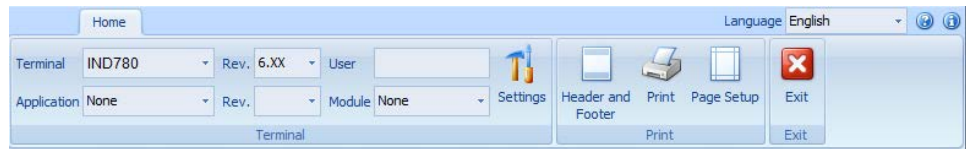


Figure 2-4: Toolbar Tabs

Product Selection Frame

The **Terminal** frame (Figure 2-5) includes a drop down menu from which the terminal type can be selected. The Application field allows the selection of any optional application programs installed on the terminal. The user security access level is displayed based on the login performed during the connection procedure. In order for InSite to determine what communication method to use, the connected product must be selected before a Save procedure can be carried out.

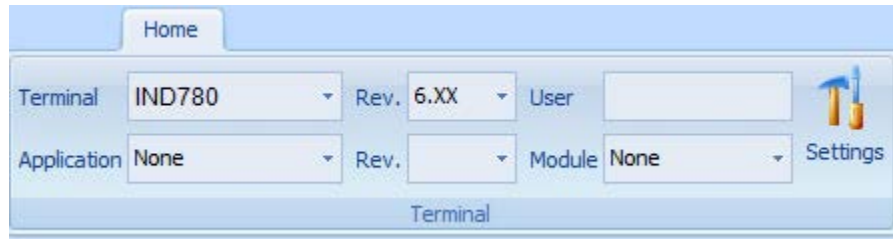


Figure 2-5: Product Selection Frame

Tree Frame

The content of the Tree Frame (Figure 2-6) changes depending on the product selected and the features available. At a minimum, two tree items will be displayed:

- Save
- Load

Selecting one of these items displays the relevant information in the tree and configuration frame. These are used to navigate to associated screens in the Configuration frame.

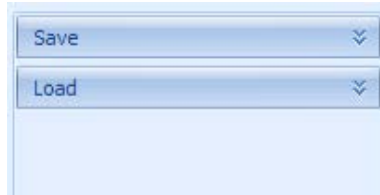


Figure 2-6: Tree Frame

Configuration Frame

The Configuration frame (Figure 2-7) displays information related to the selection made in the tree frame and/or the toolbar tool button function.

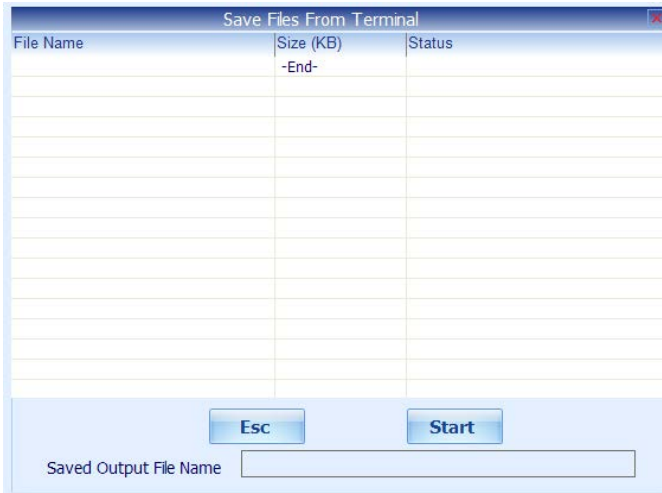


Figure 2-7: Configuration Frame

The content of the Configuration frame varies for different InSite operations.

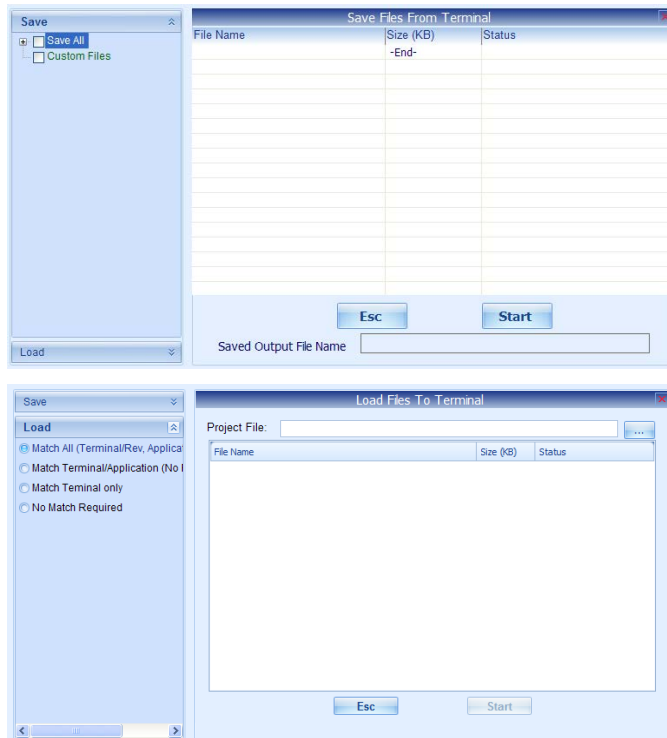


Figure 2-8: Configuration Frame – Save (top) and Load (bottom)

System line

The first section in the system line (Figure 2-9) shows the operation status. The second section shows a progress bar for operations being performed. The third section shows the connection parameters while connected – for example, the IP address of the connected terminal. The TX and RX lights blink when data is written to or read from the terminal, respectively.

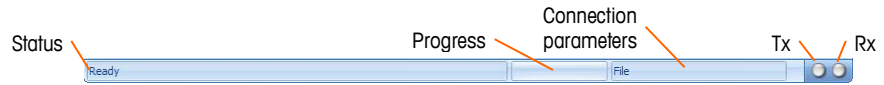


Figure 2-9: System Line

Chapter 3

InSite SL Save/Load

The InSite® SL Save/Load operations allow the user to transfer the configuration contents from the terminal to a file on the PC. Once saved, the information stored in this file may be restored to the same terminal or loaded into other terminals.

Save

InSite SL's Save operation establishes a connection with a terminal, retrieves the configuration data, and stores this data as an .ipz file on the PC. The contents of the saved file depend on the terminal's typical configuration data. For example, the IND780 uses .dmt files to store configuration shared data, and also has .csv files for tables & logs.

Save Procedure

To begin the save, follow these steps:

1. Select the terminal type for this save.

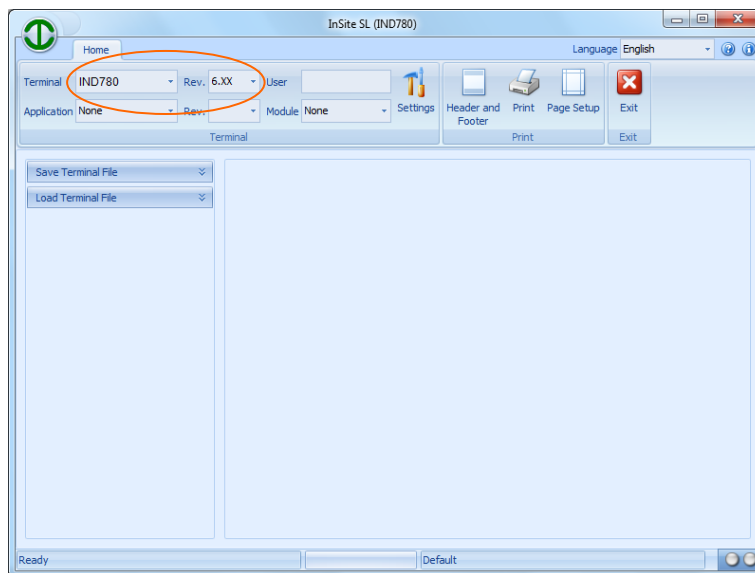


Figure 3-1: Terminal Type Selection

2. Configure the connection settings that should be used to communicate to the terminal. This is product-dependent, and can involve COM port settings and/or IP address information. The COM port selects which port is used by InSite SL on the PC, and should be used for serial communications. The IP address should be entered to match the connected terminal's IP address, and should

be used for Ethernet communications. Not all terminals support both communication methods.

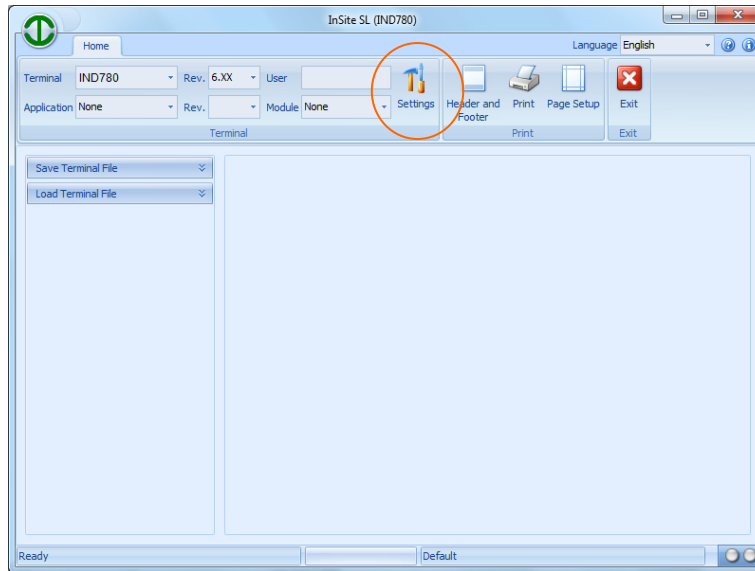


Figure 3-2: Configuring Connection Settings for Save

3. Open the Save tool in the tree frame.

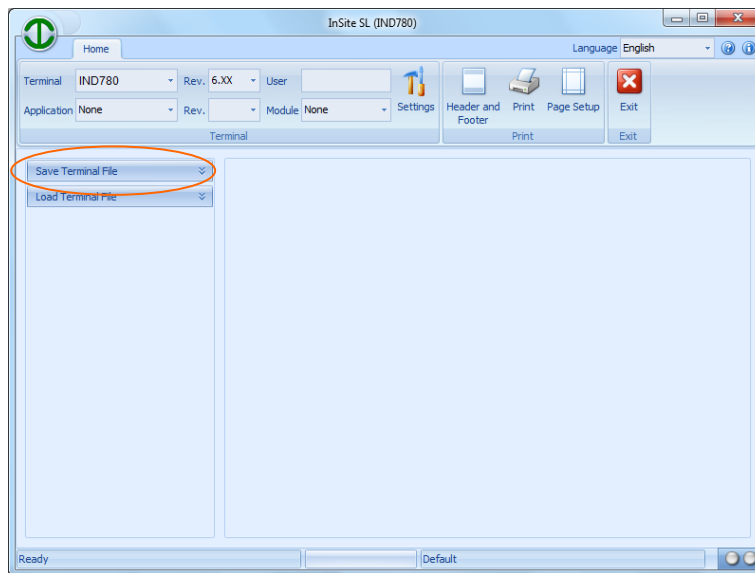


Figure 3-3: Save Tool

4. Select the information desired for the save. As items are selected, they will appear in the configuration frame to the right. Selections in the tree are product-dependent, so this view will vary based on the product selection.

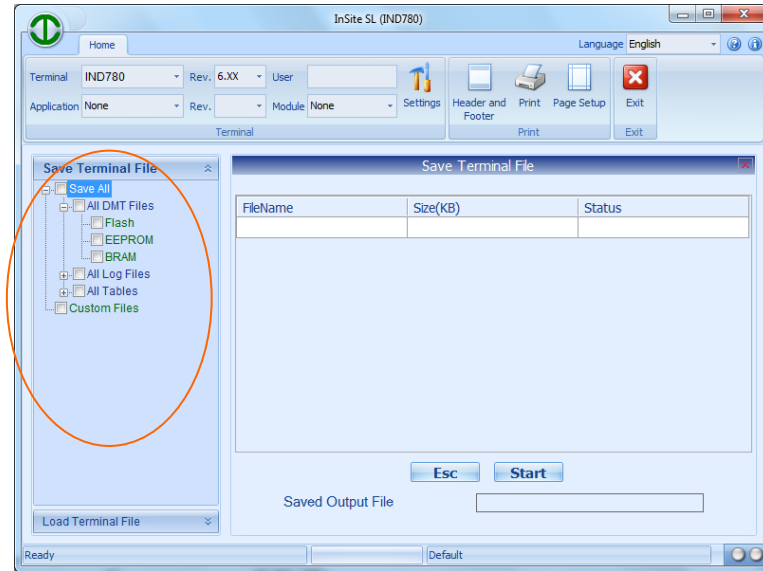


Figure 3-4: Selecting Information to Save

5. Once the items to save have been selected, start the save process by clicking **Start**.

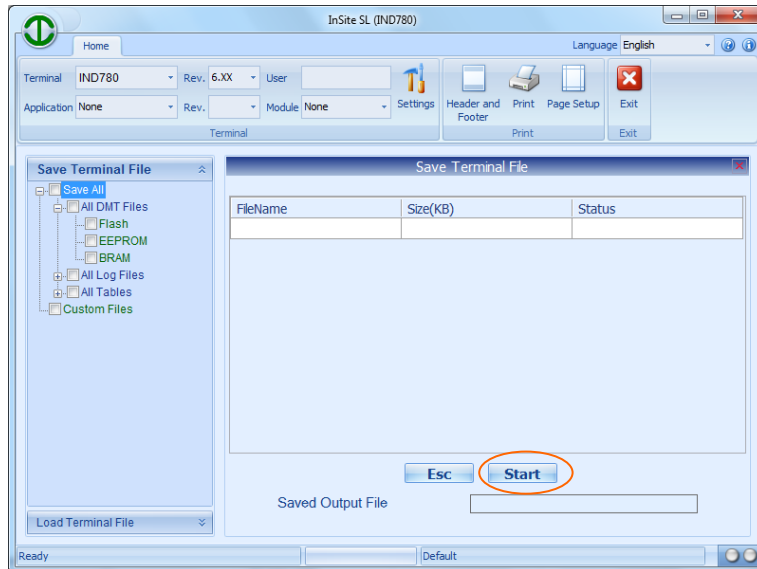


Figure 3-5: Save Start Button

6. A dialog window to name and save the file generated by the Save process will appear. Select the name and location, then click Save to begin.

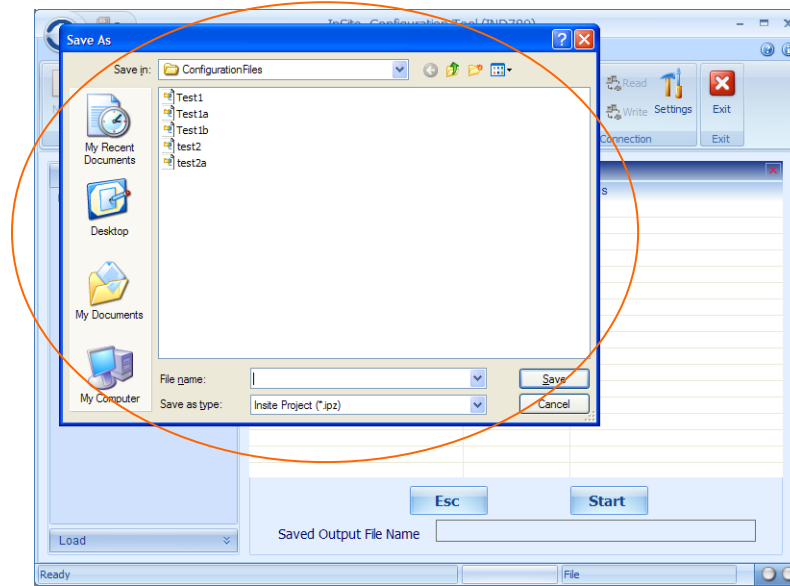


Figure 3-6: Save Dialog

7. InSite SL will begin the process to collect the data required for the Save. A login screen may be presented if the terminal requires user and password information to access setup. As information is transferred from the terminal to InSite SL, the status will be updated in the configuration frame view. Once all information is received, the save file will be created.
8. Once the Save is completed, close the Save window in the configuration frame to use other InSite features.

Using Save files

Files created by the Save process are named with the extension .ipz. This unique extension is used so InSite SL can identify them and use them for its Load process. However, they are in fact .zip files. As such, they can be opened with software that manages these types of files.

Load

InSite SL's load operation takes a stored Save file and sends its contents to a connected terminal. Load has different selectable levels of terminal checking for its process. These selections (Table 3-1) establish which set of rules InSite SL uses when it compares the saved file to the connected terminal.

Table 3-1: Rules for Loading Saved Parameters

| Load Selection | InSite check |
|----------------|---|
| Match All | Terminal firmware revision, application, and module settings must match |

| Load Selection | InSite check |
|----------------------------|--|
| Match Terminal/Application | Terminal and application settings must match, but revision and module may be different |
| Match Terminal only | Only the terminal type must match |
| No match required | No match is required |

Load Procedure

In order to begin the save, the following steps should be taken:

1. Select the terminal type for this load. This step establishes the connection settings that will be used.

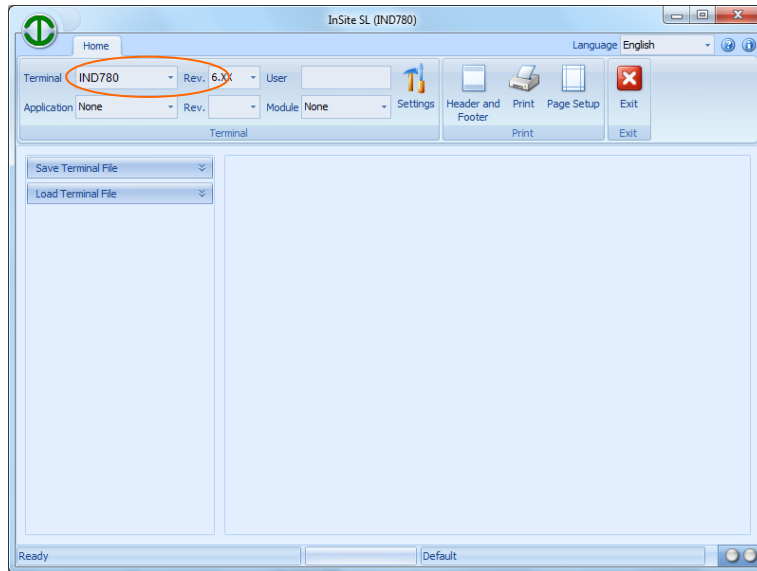


Figure 3-7: Terminal Type Selection

2. Configure the connection settings that should be used to communicate to the terminal. This is product-dependent and can involve COM port settings and/or IP address information. The COM port selects which port is used by InSite on the PC, and should be used for serial communications. The IP address should be entered to match the connected terminal's IP address, and should be used for Ethernet communications. Not all terminals support both communication methods.

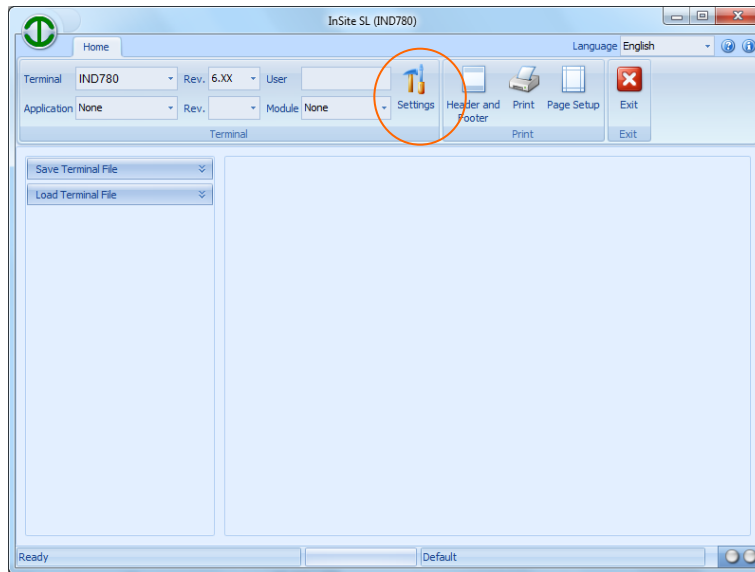


Figure 3-8: Configuring Connection Settings for Load

3. Open the Load tool in the tree frame.

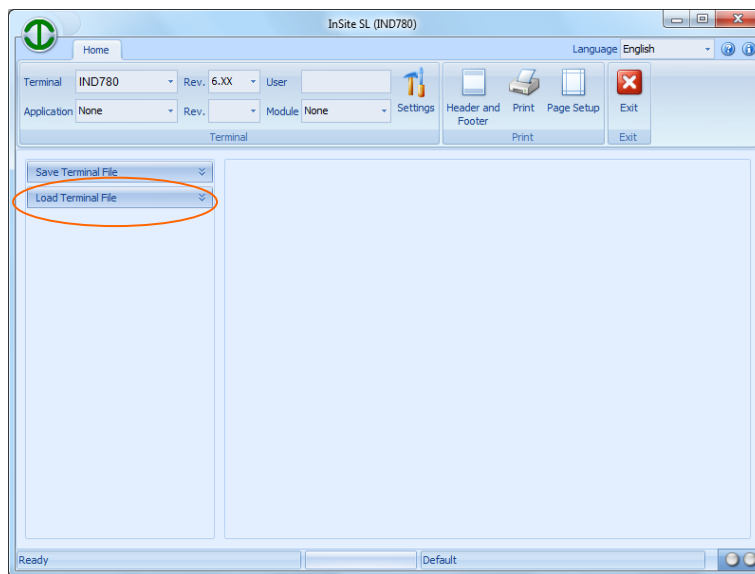


Figure 3-9: Load Tool

- Select which type of match check is required (refer to Table 3-1) and select the Project (stored Save file) file to use.

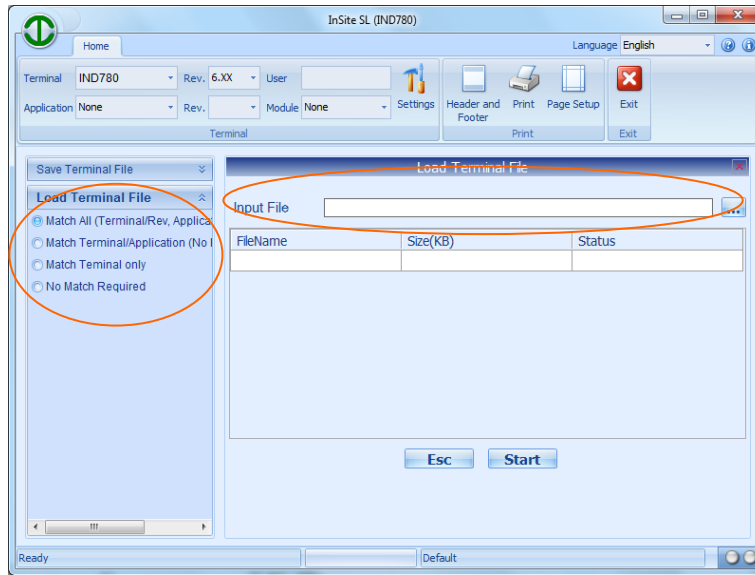


Figure 3-10: Selecting Load Rule and File

- InSite SL will open the Save file and list its contents in the Load view in the configuration frame. Click on **Start** to begin the Load process.

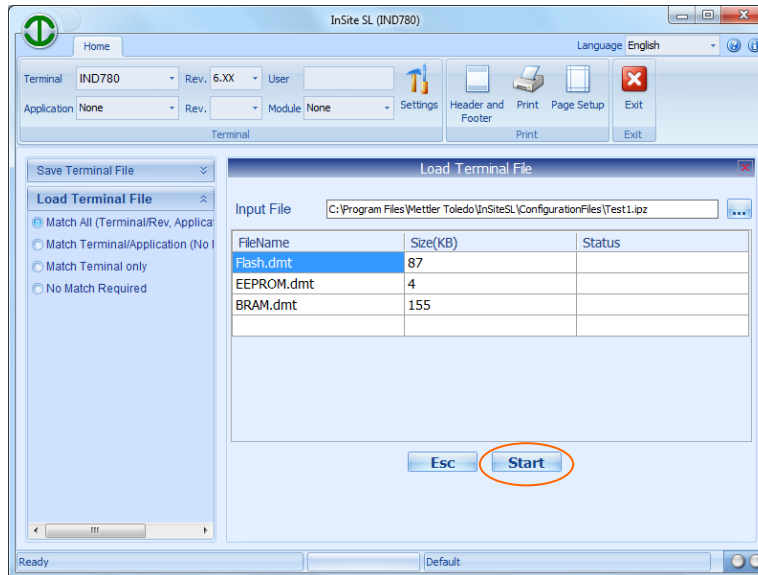


Figure 3-11: Select File's Contents Displayed, Ready to Load

- A login screen may be presented if the terminal requires user/password information to access setup. As the configuration data is sent to the terminal, the status information will be updated in the Load view. When all information has been successfully sent, the view will be cleared. Once the Load is completed, close the Load window in the configuration frame to use other InSite SL features.

Chapter 4

InSite SL Connection Settings

In order to communicate to a connected terminal, InSite® SL must be configured to use either a COM port for serial communications or an Ethernet IP address and port for an Ethernet socket connection. The section provides details on the steps needed to make these selections.

Settings

The Settings tool button provides access to the communication parameters used by InSite for the product selected in the Terminal frame. Some terminals can only support one method of communication based on hardware and software capabilities.

Changing Settings

To define the connection parameters to use, follow these steps:

1. Select the terminal type for this connection.

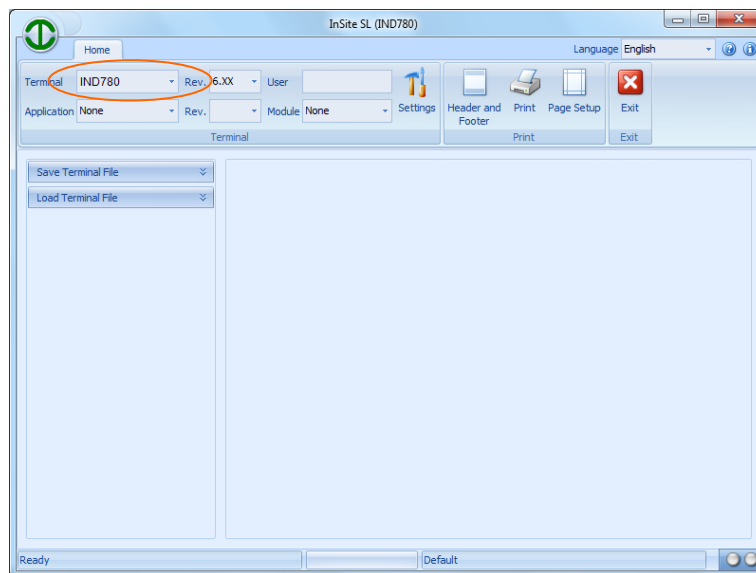


Figure 4-1: Terminal Type Selection

2. View the current settings by clicking on the **Settings** tool button.

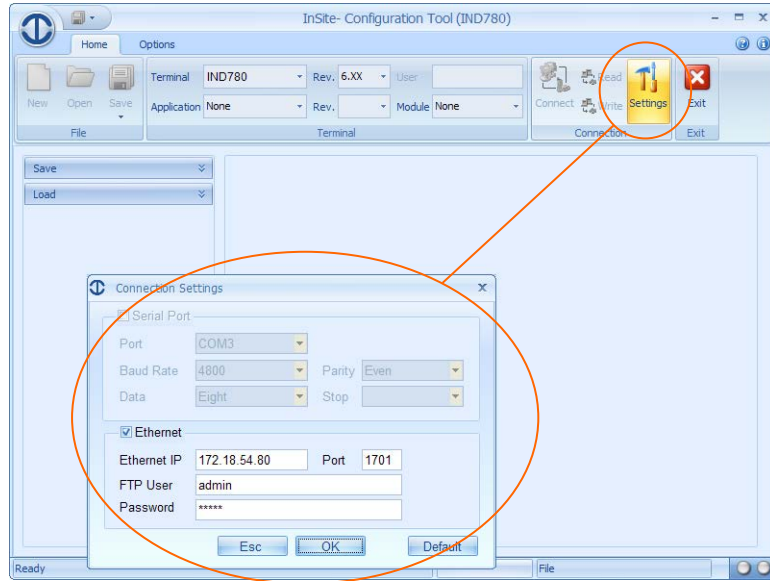


Figure 4-2: View Current Settings

3. If Serial / Ethernet selections are both available, chose the type of communication to use.

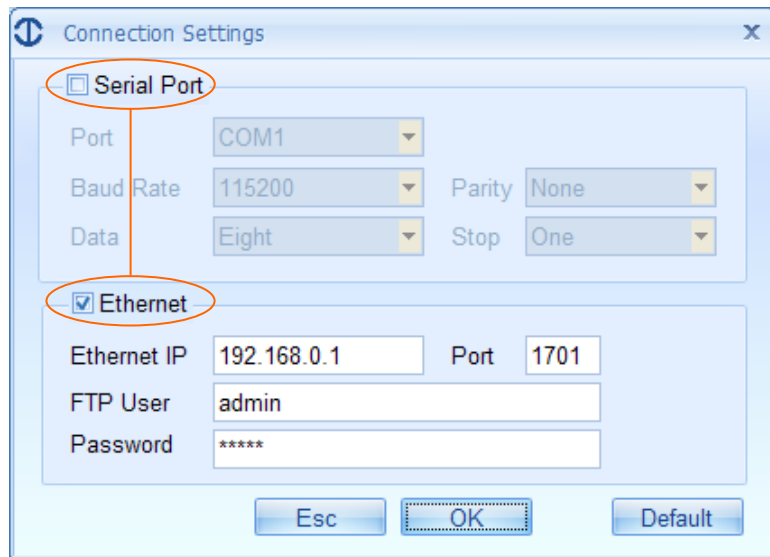


Figure 4-3: Connection Type Selection

4. Settings depend on the type of communication selected:
 - a. For an **Ethernet** connection, enter the IP address and port of the terminal. InSite will use this to establish the socket connection to it. The FTP user/password information is used when FTP access is required for file transfers. The default user and password are **admin**, **admin**.
 - b. For a **serial** connection, select the PC COM port and port configuration data. InSite will use this information to control the PC com port during serial communications with the terminal. InSite can use USB to serial port adapters that have been configured on the PC. It will display any serial

port it can use in its selection list. Typically, you must install the USB driver in order for the connection to work correctly – do not use the generic USB driver.

Terminal Connection types

Table 4-1 indicates which communication method/s InSite can use for each terminal:

Table 4-1: Communications Methods, by Terminal Type

| Terminal | Communication Type/s Available |
|------------|--------------------------------|
| IND130 | Serial only |
| IND135 | Serial only |
| IND131/331 | Serial only |
| IND560 | Serial or optional Ethernet |
| IND560x | Serial or optional Ethernet |
| IND560 PDX | Serial or optional Ethernet |
| IND780 | Ethernet only |
| IND890 | Ethernet only |

METTLER TOLEDO

METTLER TOLEDO is a registered trademark of
Mettler-Toledo, LLC

©2012 Mettler-Toledo, LLC