

Floor Scales



PFA779lift

Hygienic Design

Easy Handling

GMP-Compliant

High Level of Stability

Tailored Solutions

Hygienic Design and Flexible Functionality
for New Areas of Application

METTLER TOLEDO

The Raisable Floor Scale – Optimum Protection with Sophisticated Design

Corrosion prevention:	No seam corrosion thanks to tightly welded section tubes
Contamination protection:	Easy cleaning even in difficult areas enabled by optimum routing of load cells cables
IP protection:	IP68 protection for scale interface and load cells
Load cell protection:	Durability thanks to integrated overload stop combined with skirt protection
Static protection:	Maximum stability provided by cross members combined with reinforced load plate

Available frame sizes

800×800 mm to 1500×1500 mm

Weighing range

300–3000 kg

Field of application

- Wet, dry
- Hazardous areas

Certifiable verification intervals

- Single Range
- Multi Range
- Multi Interval

Options

- Digital scale interface calibrated 1st or 2nd step
- Patterned or ground load plate surface
- Acid-proof stainless steel in AISI 316
- Length of the connection cable

Regardless of Whether Conditions are Humid or Wet, Nothing Stands in the Way of the Scale's Operation

Neither humid and wet environmental conditions nor regular cleaning pose a problem to the PFA779lift. Hermetically seal-welded section tubes along with vertically aligned cross members keep potential contamination areas to a minimum.

Enclosing the load cell cables within the section tube and the sealed load plate hinges create the conditions for an optimum level of cleaning. In addition to this, the raisable load plate of the PFA779lift enables unlimited access to sensitive areas of the weighing platform.

Maximum Metrology – with the "Swinging" Scale

Specially developed rocker feet compensate for transverse forces acting during the weighing process. The integrated overload protection device offers protection for the stainless steel load cells and thereby ensures a long, maintenance-free operation. With numerous, certifiable verification intervals, the various load capacities of the hermetically sealed

load cells meet the toughest of metrological requirements.

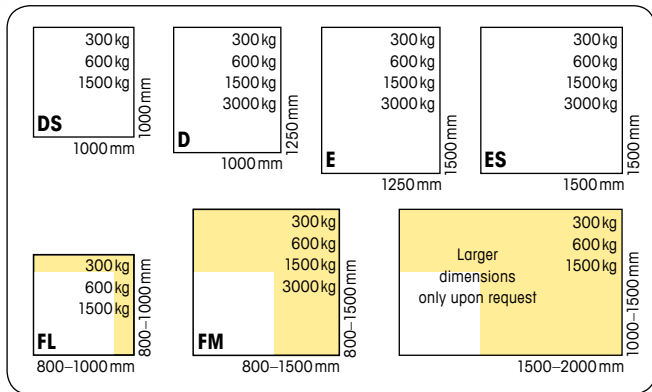
Robustness and Reliability Guaranteed at an Installation Height of Just 80 mm

The unique design with a reinforced load plate and straightforward sealing mechanism means that the PFA779lift is well suited to even the most severe of operating conditions. The energy required to drive over the weighing platform by means of a ramp is kept to a minimum due to the scale's extremely low overall height. Pit mounting – even in areas with low floor thickness – is incredibly easy at an installation height of just 80 mm.



PFA779lift – hygienic design with sophisticated cleaning options.

PFA779lift – Offering a Variety of Models



PFA779lift with raisable load plate

High-quality Material Long operating Life

Regardless of whether it is a load cell, frame, load plate or scale interface, high-alloy steel provides optimum protection against corrosion particularly in harsh environments. If desired, frames and load plates can be designed in acid-proof stainless steel (AISI 316).

Digital Scale Interface – it Could Not Be Any Simpler

Reap the benefits of a digital IDNet scale interface: following simple connection, the weighing platforms can be used right away: plug 'n' weigh! The powerful analog/digital converter technology ensures that precise measured values are transferred in a direct and stable manner. What's more, there is another financial benefit to digital weighing platforms: we will perform the first and, if required, the second stage of initial verification ¹⁾.

A Well-rounded Range

An extensive range of accessories such as approach ramps, installation frames, pit installation frames or corner plates perfectly complement the scale.

Non-slip, Smooth or Ground

Both the weighing platforms and the approach ramps are available with a patterned surface, a ground surface is also available.

Tailor-made Solutions

If the standard sizes fail to meet your needs, then simply order your

weighing platform in line with your required dimensions. If your individual requirements fall within our range, we will manufacture the weighing platform, approach ramp etc. with the fine details of your system in mind.

The PFA779lift floor scales provide you with maximum flexibility and adaptability.

¹⁾ Second step only for 1x 3000e / 2x 3000e multi-range

Certifiable Verification Intervals

	Weighing range	Standard	Options		
		1x 3000e SR	2x 3000e MR/MI	3x 3000e MR	1x 6000e SR
PFA779lift-DS/FL	300kg	0.1 kg	0.05/0.1 kg	–	0.05 kg
	600kg	0.2 kg	0.1/0.2 kg	0.05/0.1/0.2 kg	0.1 kg
	1200kg	–	–	–	0.2 kg
	1500kg	0.5 kg	0.2/0.5 kg	0.1/0.2/0.5 kg	–
PFA779lift-D/E/ES/FM	300kg	0.1 kg	0.05/0.1 kg	–	0.05 kg
	600kg	0.2 kg	0.1/0.2 kg	0.05/0.1/0.2 kg	0.1 kg
	1200kg	–	–	–	0.2 kg
	1500kg	0.5 kg	0.2/0.5 kg	0.1/0.2/0.5 kg	–
	3000kg	1.0 kg	0.5/1.0 kg	0.2/0.5/1.0 kg	0.5 kg

SR = Single Range MR = Multi Range
MI = Multi Interval

Our Expertise Lies in the Attention to Detail



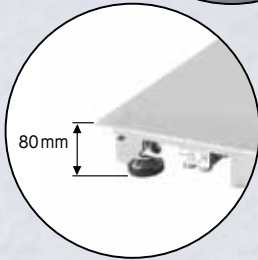
Rigid and Robust

The highly reinforced load plate facilitates vehicles driving over the scale and prevents the load plate from being bent.



Well Positioned and Installed

Secure the chain, raise with the crane, set down at the place of installation and align, if required – it couldn't be any simpler.



Low-profile and Elegant

Setting a benchmark for floor scales with a height of just 80 mm.



Maximum Metrology Guaranteed

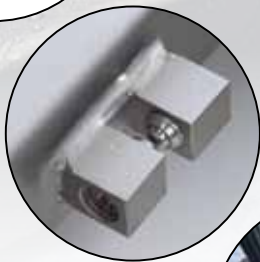


Hermetically sealed, stainless steel load cell with integrated overload protection, high degree of IP protection and rocker feet.



Rigid & Hygienic

Torsionally-rigid tubular design in connection with cross ribs ensures a maximum level of rigidity while at the same time reducing potential contamination surfaces.



Closed and Locked

The automatic locking mechanism of the load plate means that manual locking is now a thing of the past.



Sophisticated Design

Cleaning into the deepest, darkest corners



Hazardous Area	Safe Area
<p>Cat. 3 Zone 2/22</p>  <p>e.g. IND690xx or IND4x9xx</p>	<p>User terminal IND690 with floor stand</p>  <p>PFA779lift</p>

For use in Hazardous Areas

We can offer you complete solutions for Category 3. The standard models of the PFA779lift can be used in both safe and hazardous areas of Category 3 at no additional cost. When used in conjunction with the numerous display units such as IND690xx or IND4x9xx, PFA779lift floor scales are the optimum equipment for use in Zones 2 and 22.



Cleanliness

No concealed dirty corners thanks to sealed hinges.



Opening and Closing

Minimum energy required for opening and closing procedures thanks to optimised pneumatic springs.



Various Scale Interfaces

in one sealed housing. Analog signal or digital signal with all the benefits of "plug'n weigh".



Optimum Cleaning

Load cell cables are laid in the section tube in such a way that they are protected against damages.



Robust Suitability for Daily Use

The integrated skirting protection guarantees continual availability in an industrial environment.



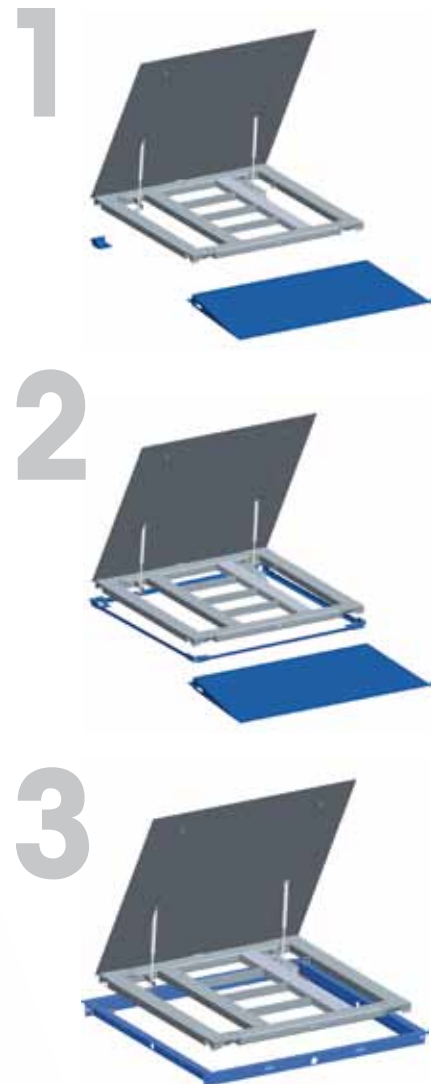
Fast and Straightforward Installation

Due to the low overall height of just 80 mm²⁾, the floor scales are ideally suited to floor installation with approach ramps and pit installation.

Various solutions are offered for floor installation:

- 1) The weighing platform is positioned directly on the floor: slip-resistant rubber disks on the rocker feet prevent slippages. The preassembled weighing platform level indicator means it is not necessary to fix the unit to the floor for calibrated operation. To protect the weighing platform against transverse forces or to install it in an existing pit, the scale can be fixed to the floor using corner plates. Optional approach ramps can be installed at ease by means of ramp fixing angles.
- 2) The installation frame provides the simplest and fastest method of floor installation: Insert rawl plugs into the installation frame – insert weighing platform – align – and you're done. The approach ramps can be directly connected and easily disconnected again for cleaning purposes.
- 3) A welded pit frame is available for pit installations. Yet again, installation couldn't be simpler: Align pit frame – set in concrete – insert weighing platform – and you're done. The installation time is kept to a bare minimum.

²⁾ 80 mm for floor installation, 85 mm with corner plate set, installation frame or ramps.



Standard Configurations

		PFA779lift DS/D/E/ES/FL/FM			
Maximum load	kg	300	600	1500	3000
e1/Max1	kg	0.1/300	0.2/600	0.5/1500	1.0/3000
dmax		30.000 ⁵⁾			
Taring range (by subtr.)	kg	0 – Maximum load			
Max. preload	kg	400	1400 ³⁾	2500 ⁴⁾	1200
Measuring principle		DMS (analog / digital scale interface)			
Max. load capacity stat.					
Central	kg	3500	3500	4500	4500
Lateral	kg	2300	2300	3000	3000
Corner	kg	1150	1150	1500	1500
Weighing accuracy 1x 3000e					
Reproducibility (s)	kg	0.04	0.06	0.15	0.3
Linearity (type) +/-	kg	0.05	0.1	0.2	0.4
Corners (1/3 maximum load) (type) +/-	kg	0.07	0.14	0.35	0.7
Protection		IP68			
Temperature range		-10°C / +40°C			



The special rocker foot enables the scale to absorb vibration and movement to give fast, accurate and repeatable weighing results

³⁾ in the case of 3x 3000eMR, the preload is reduced to 120 kg

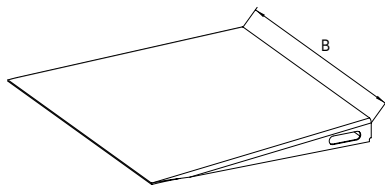
⁴⁾ in the case of 3x 3000eMR, the preload is reduced to 500 kg

⁵⁾ digital version

Accessories

Approach Ramps

- Including floor angle for installation with a corner plate set
- Including fastening bolts for connection to the installation frame



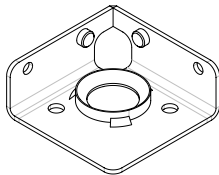
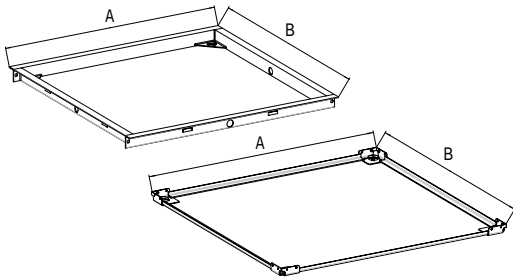
Width B	Material	Surface
1000mm	Stainless steel AISI 304	Smooth, fluted
1250mm	or	or
1500mm	Stainless steel AISI 316	geschliffen
800–1500mm		

Installation Frame / Pit Frame

Length A x width B	Material
1000x1000mm	Stainless steel AISI 304
1250x1000mm	or
1500x1250mm	Stainless steel AISI 316
1500x1500mm	
800x800mm ... 1500x1500mm	

Corner Plates, Set Consisting of Two Pieces

Material
Stainless steel AISI 304
or
Stainless steel AISI 316



Options

PFA779lift Length x width [mm]	DS 1000x1000	D 1250x1000	E 1500x1250	ES 1500x1500	FL 800x800 – 1000x1000	FM 800x800 – 1500x1500
Height (mm)	80					
Weighing range						
300 kg	•	•	•	•	•	•
600 kg	•	•	•	•	•	•
1500 kg	•	•	•	•	•	•
3000 kg		•	•	•		•
Load plate surface						
Standard	smooth					
Optional	patterned or ground					
Load plate material						
Standard	Stainless steel AISI304 ⁶⁾					
Optional	Stainless steel AISI316 ⁷⁾					
Load frame material						
Standard	Stainless steel AISI304					
Optional	Stainless steel AISI316					
Weighing platform design						
Standard	on rocker feet					
Optional	with installation frame					
Verification interval						
Standard	1x 3000e SR					
Optional	2x 3000e MR – 2x 3000e MI – 1x 6000e SR – 3x 3000e MR ⁸⁾					
Interface						
Standard	analog					
Optional	digital (IDNet, 1st step calibrated) – digital (IDNet, 2nd step calibrated)					
Connection cable						
Standard	5 m					
Optional	10 m – 20 m					

⁶⁾ AISI304 corresponds to V2A

⁷⁾ AISI316 corresponds to V4A

⁸⁾ 300kg / 3x 3000eMR is not possible, 600kg / 3x 3000 eMR up to 1250x1000 mm only

Further information relating to PFA779lift weighing platforms can be found on the data brief at:

► www.mt.com

Uncompromised Commitment to Excellence

The use of weighing platforms in hazardous areas involves an increased risk of damages. A special duty to exercise proper care applies to use in these areas. METTLER TOLEDO is the only company that has trained specialised personnel, approved spare parts and the technical expertise to operate and maintain the scales. Your safety is in our hands.



Installation, Configuration, Integration and Training

Our service representatives are factory-trained on hazardous area installations. We make certain that your weighing equipment is ready for safe production in a cost-effective and timely fashion and that personnel are trained for success.



Initial Calibration and Qualification Documentation

The environment and application requirements are unique for every scale, so performance must be tested and certified. Our calibration and qualification services document performance to ensure accuracy and to verify operational readiness.



Periodic Maintenance and Calibration

A maintenance agreement provides on-going confidence that your equipment meets hazardous area specifications and that weighing process accuracy is certified to comply with quality system requirements.

For More Information on ServiceXXL® Log Onto: ► www.mt.com/servicexxl

www.mt.com/industrial

For further information

Mettler-Toledo AG

Industrial
CH-8606 Greifensee
Switzerland
Tel. +41 44 944 22 11
Fax +41 44 944 30 60

Subject to technical changes
© 04/2010 Mettler-Toledo AG
Printed in Switzerland
MTSI 22020374



Quality certification. Development, production, and auditing in accordance with ISO9001. Environmental management system in accordance with ISO14001.



ISO/IEC 17025 Accredited service organizations
Results, not promises.



Conformité Européene
This label is your guarantee that our products conform to the latest guidelines.