

Wrapping and Labeling



Model 703

Automatic Security Tag

Applicator



Secure Your Profits
by Securing Your Products

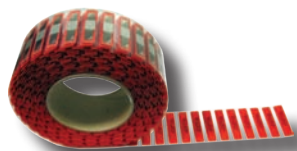
Secure Your Meat Case... Automatically

- Applies Sensormatic® EAS Tags...Reduces Meat Shoplifting
- Tag application based on PLU, Price/Lb, or Total Pack Price
- Automatic operation saves time and labor, ensures tag applied
- Tag concealed and secured under price label
- Installs on 705, 706, and 606 Auto-Labeler®...upgrade your existing investment

The Model 703 Security Tag Applicator applies the Sensormatic Electronic Article Surveillance (EAS) Tag to help prevent theft of product from your meat case.

Automatic operation saves time and labor cost ... and employees are not burdened with the decision "to tag" or "not to tag." An alert message is sent when tags run out.

After a package has been wrapped and weighed, the Model 703 mounted on the Auto-Labeler applies a tag to the top of the pack. The Auto-Labeler then prints and applies a price label on top of the tag, concealing the tag underneath.



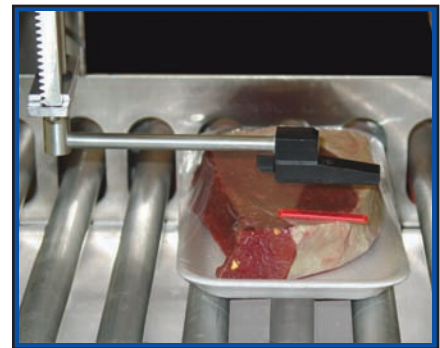
Model 703 uses Sensormatic Ultra-Strip® III EAS Tags

Not all trays are of high enough value to justify an EAS tag. Application of the tag is determined either by specific PLU or by setpoints entered into the Model 8361 Prepack Controller. When using setpoints, application of a tag will occur if the item price/lb is above a setpoint price/lb or package total price is above a setpoint total price.

The 703 operates with several current and previously offered Auto-Labelers, including the Model 705, 706, and 606. Loading the tag roll is easy and uses the Sensormatic tags designed specifically for meat trays.



Model 703 Applicator shown on Model 706 Auto-Labeler®



Tag is applied to wrapped tray, and then price label is applied over tag

Model 703 Specifications

Dimensions	9.5" L x 9" W x 18" H
Labeling Rate	Up to 25 packs per minute
EAS Tags	Sensormatic Ultra-Strip III 1400 tags/roll
Package Height	0.5" (13 mm) min 4.0" (102 mm) max
Label Length	2.4" L min, 2.2" W min
Labelers	705, 706, 606
Controller and Printer	8361 Controller and 317 Printer
Electrical	Power supplied by labeler
ETL Approval	Conforms to UL 60950-1 and CSA 22.2
Temperature Range	41°F to 95°F (5°C to 35°C)

www.mt.com

Visit for more information

USA

Mettler-Toledo, LLC
1900 Polaris Parkway
Columbus, OH, 43240
Tel. (1) 800 523 5123

Mettler-Toledo AG

Sales International
CH-8606 Greifensee
Switzerland
Tel. +41 44 944 22 11

Subject to technical changes
©2012 Mettler-Toledo, LLC
Printed in USA
RT1127.1E



METTLER TOLEDO Service

Quality Management System Certification. Development, production, and auditing in accordance with ISO9001. Environmental management system in accordance with ISO14001.

Tailored Services. Our extensive service network is among the best in the world and ensures maximum availability and service life of your product.



Conformité Européenne

This label is your guarantee that our products conform to the latest guidelines.