

# Dispensing & Formulation



**FormWeigh.Net®**

Reliable and Expandable Formulation Control

**METTLER TOLEDO**

## Simplify Your Tasks with Smart Formulation

The FormWeigh.Net® system for dispensing and formulation is designed to simplify your complex and demanding formulation needs. Thanks to the intuitive formulation process, you are assured of stable product quality from batch to batch, while maximizing material utilization, process speed and reducing the amount of manual work involved. Reap the benefits of FormWeigh.Net® in your industry, regardless of whether it is food, pharmaceuticals, chemicals, cosmetics or manufacturing.

The FormWeigh.Net® benefits for your industry:

- Increased productivity
- Guaranteed consistent product quality
- Process safety and stability
- Time savings
- High flexibility

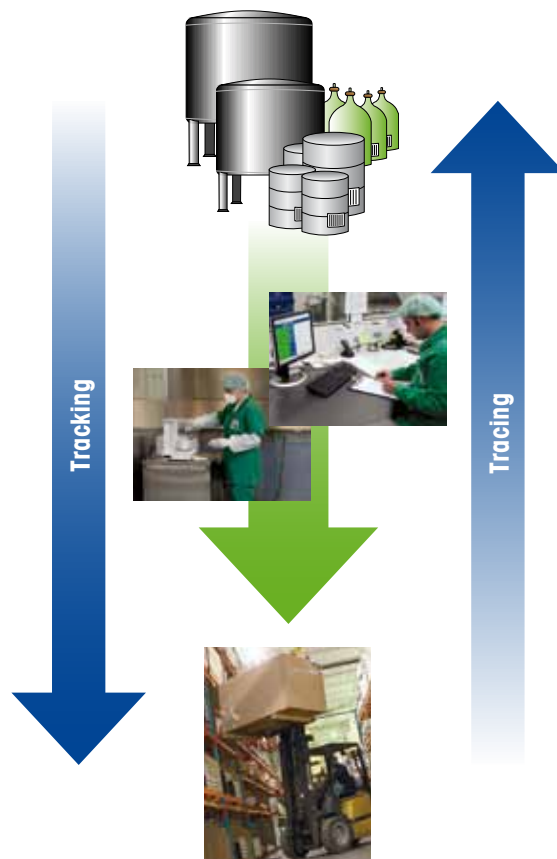


## Achieve Reliable and Traceable Results Every Time

FormWeigh.Net® works alongside your processes and documents them electronically on the centralized database without compromising your flexibility. FormWeigh.Net® allows you to take control of your workflows in such a way that you are always aware of which orders are completed, in progress or awaiting processing.

FormWeigh.Net®, the powerful solution with countless advantages:

- Easy to handle
- Centralized data management
- Accelerated material and data flow
- Batch-oriented workflow from incoming goods to shipment
- Batch fraction management and quantity adjustment
- Multiple formulation methods
- Functions compliant with 21 CFR Part 11, 21 CFR Part 111 and EU 178/2002



# Increase Production Yield and Maximize Utilization of Raw Materials

In the case of manual processes, stored raw materials may expire before they enter production or they may become unusable as a result of formulation errors.

You may, therefore, have to dispose of expensive raw materials, drastically reducing your production yield and at the same time incurring additional costs for the disposal of waste.

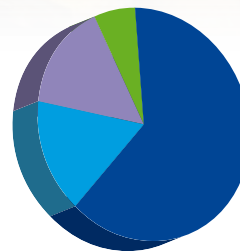
Thorough operator training and powerful functions, such as FEFO (First Expire – First Out), allow you to utilize your materials fully and reduce waste, which consequently makes your production more cost-effective and environmentally friendly.

FormWeigh.Net® provides:

- Clear procedures and guidance
- Reduced confusion of components
- Verification scanning prior to dispensing

**Total raw material costs can be divided into:**

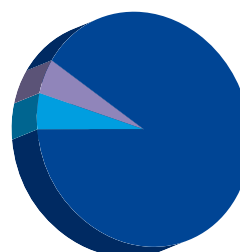
- Effective production yield
- Expired stock
- Bad batches



Paper-based dispensing process

**Additional costs incurred through process errors**

- Disposal costs for bad batches and expired materials



FormWeigh.Net® guided process

# Boost Your Performance Increase Operator Efficiency

If two people perform the same job, you should benefit from the output of two people. Pharmaceutical companies that do not make use of a supporting system usually apply the countercheck principle in order to comply with regulatory requirements. This means that two people work together to achieve the output of only one person. This is an extremely high price to pay for process reliability, which can be avoided by utilizing a system to provide the second pair of eyes.

FormWeigh.Net® guides your personnel step by step through the dispensing and formulation process. Furthermore, it selects the suitable balance or scale fully automatically. The second person can be assigned to other duties, freeing up resources and increasing productivity.

Key performance indicators of FormWeigh.Net® in pharmaceutical applications:

- Countercheck no longer required
- Seamless documentation at the push of a button
- Clear material assignment with machine-readable labels
- Automatic API or component adjustment
- Minimized operative overheads (administration and documentation)



In a manual process, two people work together on the same order to countercheck whether it has been executed correctly.



FormWeigh.Net® enables system-guided order processing by one person, doubling the effective productivity

# FormWeigh.Net®

## Reliable Results Throughout Your Entire Formulation Workflow

Company: FormWeigh.Net									
Recipe details									
Recipe No.	Recipe Name	Recipe Unit	Recipe Weight	Recipe Date	Recipe Status	Recipe Location	Recipe Operator	Recipe Date	Recipe Status
000001	Basic Recipe	kg	10.000	06.10.2009	Active	Plant 01	Operator 01	06.10.2009	Success
Material No.	Material Name	Material Unit	Material Weight	Material Date	Material Status	Material Location	Material Operator	Material Date	Material Status
000001	Basic Recipe	kg	10.000	06.10.2009	Active	Plant 01	Operator 01	06.10.2009	Success

Basic recipe for order generation.



PC-based ID30 terminal with touchscreen for efficient interaction with FormWeigh.Net®.

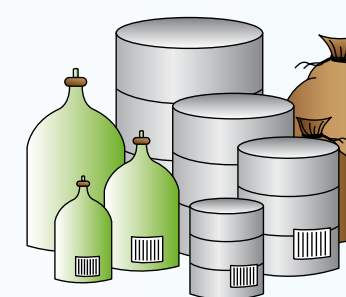


Centralized SQL database server

### Central dispensing

Order No.	Order Date	Order Status	Order Weight	Order Location	Order Operator	Order Date	Order Status
20091006-01	2009-10-06	Open	10.000	Plant 01	Operator 01	06.10.2009	Success
20091006-02	2009-10-06	Open	10.000	Plant 01	Operator 01	06.10.2009	Success
20091006-03	2009-10-06	Open	10.000	Plant 01	Operator 01	06.10.2009	Success
20091006-04	2009-10-06	Open	10.000	Plant 01	Operator 01	06.10.2009	Success
20091006-05	2009-10-06	Open	10.000	Plant 01	Operator 01	06.10.2009	Success
20091006-06	2009-10-06	Open	10.000	Plant 01	Operator 01	06.10.2009	Success
20091006-07	2009-10-06	Open	10.000	Plant 01	Operator 01	06.10.2009	Success
20091006-08	2009-10-06	Open	10.000	Plant 01	Operator 01	06.10.2009	Success
20091006-09	2009-10-06	Open	10.000	Plant 01	Operator 01	06.10.2009	Success
20091006-10	2009-10-06	Open	10.000	Plant 01	Operator 01	06.10.2009	Success

List of pending orders – ready for execution.



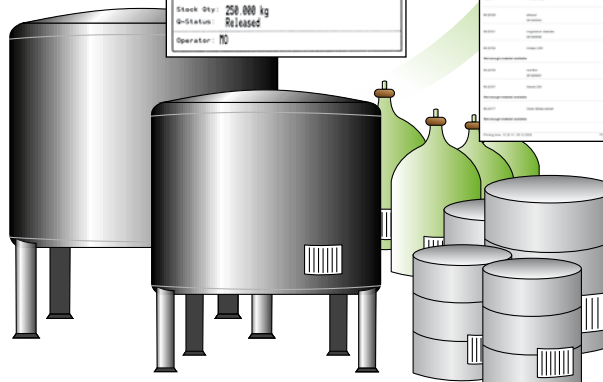
Stock	
Nutrihealth Corp.	
Date:	06.10.2009 11.35.25
Exp. Date:	28.06.2011
Material Name:	ethanol
Mat. No.:	0-22100
Lot No.:	061009007
Stock Qty:	250.000 kg
St-Status:	Released
Operator:	NO

Optimized material picking from stock – according to the First Expire – First Out (FEFO) principle.

Order picking list									
Order No.	Order Date	Order Status	Order Weight	Order Location	Order Operator	Order Date	Order Status	Order Location	Order Operator
20091006-01	2009-10-06	Open	10.000	Plant 01	Operator 01	06.10.2009	Success	Plant 01	Operator 01
20091006-02	2009-10-06	Open	10.000	Plant 01	Operator 01	06.10.2009	Success	Plant 01	Operator 01
20091006-03	2009-10-06	Open	10.000	Plant 01	Operator 01	06.10.2009	Success	Plant 01	Operator 01
20091006-04	2009-10-06	Open	10.000	Plant 01	Operator 01	06.10.2009	Success	Plant 01	Operator 01
20091006-05	2009-10-06	Open	10.000	Plant 01	Operator 01	06.10.2009	Success	Plant 01	Operator 01
20091006-06	2009-10-06	Open	10.000	Plant 01	Operator 01	06.10.2009	Success	Plant 01	Operator 01
20091006-07	2009-10-06	Open	10.000	Plant 01	Operator 01	06.10.2009	Success	Plant 01	Operator 01
20091006-08	2009-10-06	Open	10.000	Plant 01	Operator 01	06.10.2009	Success	Plant 01	Operator 01
20091006-09	2009-10-06	Open	10.000	Plant 01	Operator 01	06.10.2009	Success	Plant 01	Operator 01
20091006-10	2009-10-06	Open	10.000	Plant 01	Operator 01	06.10.2009	Success	Plant 01	Operator 01

Nutrihealth Corp.	
Weighing	
Product name:	Nutrihealth Capsules 350
Order:	20091006-04
Lot:	20091006-04-01
Material:	ethanol
Lot No.:	061009004
Tare weight:	269,4 g
Target weight:	1.000 kg
Real weight:	1.004,2 g
Operator:	NO
Date:	06.10.2009 13.52.43

Dispensed materials for customer order – ready for processing.

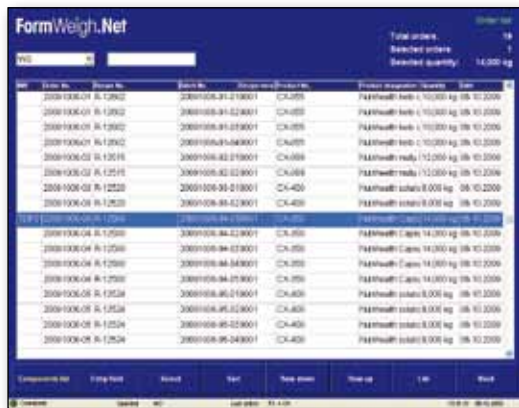


Raw material stock with unique identifiers managed by FormWeigh.Net®.

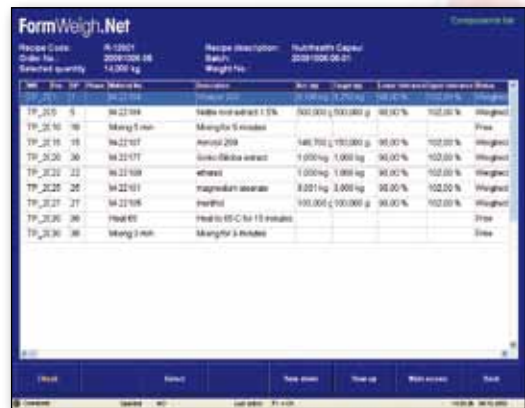




# Your Daily Tasks Easily Accomplished



FormWeigh.Net® order lists displaying pending formulation tasks.



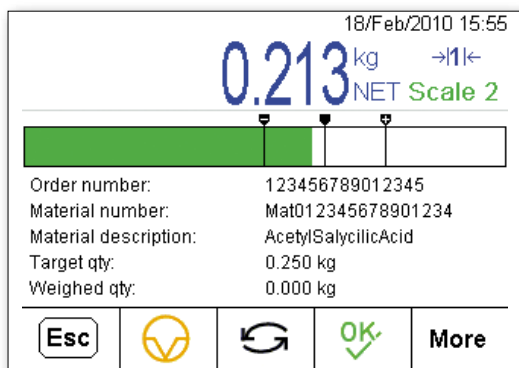
Sequence of recipe components and instructions on the component list at the weighing station.



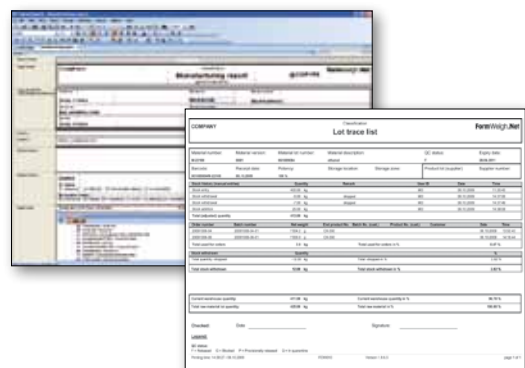
The FormWeigh.Net® weighing station software shows all key component information at a glance, including pictograms, such as hazardous symbols.



The real-time progress bar is clearly visible to the operator and changes its color according to the weighing progress.



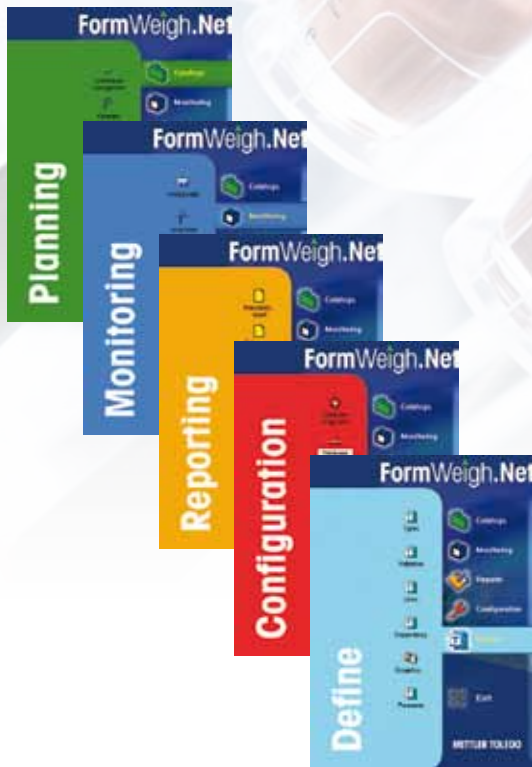
IND780 formulation terminal.



Use Crystal Reports to design your own customized report layouts.



# The Flexible and Modular Standard Formulation Solution



## What you stand to gain

- Increased production yield and optimized raw material utilization
- Reduced bad batches and batch re-work
- Less wastage
- Advanced stock management
- Clear and streamlined processes
- Seamless recipe handling
- Full traceability throughout your production process
- Increased production flexibility without compromising process stability
- Increased productivity in dispensing
- Compliance with the FDA and other regulations regarding audit trail and process control, such as 21 CFR Part 11, 21 CFR Part 111 or EU 178/2202
- Fast return on investment

## What we promise to provide

- A scalable, standard system, flexibly adapting to your needs
- A modern and continuously updated system for your dispensing and formulation tasks
- Flexible adaptation to changing conditions
- Intuitive operation and simple handling
- Terminals and weighing equipment which have been tried and tested in the industry
- Minimal training requirements and maximum prevention of operator errors
- Central data storage with maximum availability
- Ideal interaction between software, hardware and peripherals
- Maximum investment protection through long-term product maintenance and proven upgrade strategies

Find out how FormWeigh.Net® can save you money:

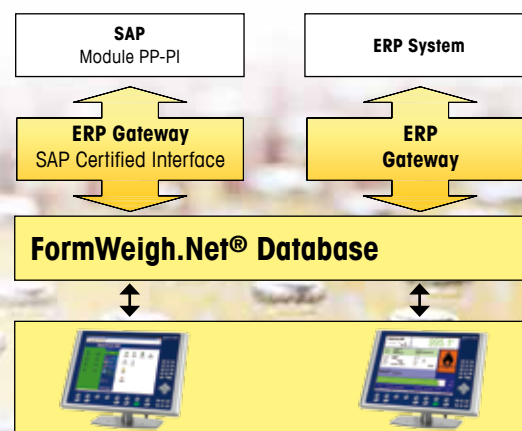
► [www.mt.com/formulation-calculator](http://www.mt.com/formulation-calculator)

## ERP Integration – Seamless Online Data Management

### Share data between FormWeigh.Net® and your ERP/MES system

If you maintain your materials and orders on your ERP system, the FormWeigh.Net® ERP Gateway brings your efficiency to the next level by exchanging this data through a standardized interface.

FormWeigh.Net® eliminates the need to re-enter master and stock data manually through continuous synchronization with your ERP system. This increases your overall speed and reduces the risk of errors. METTLER TOLEDO offers various types of ERP Gateways, which are compatible with most ERP systems, including SAP.





# Professional Software Services

**METTLER TOLEDO offers you a wide range of professional services to ensure smooth and efficient project progress and guarantee long-term system reliability.**



## Implementation consultation

Experienced project engineers plan the implementation of your FormWeigh.Net® system together with you and the future system users.

Your requirements and their realization in the system are clear right from the start, meaning that you won't have any unwanted surprises once the system is in use.



## Data integration

If you want your FormWeigh.Net® system to exchange process data with your ERP system, don't hesitate to discuss your requirements with us. We provide consultation and support so that you'll benefit from a seamless integration.

## Training

Comprehensive user training will ensure that your operators are familiar with the system and are able to utilize it fully.



## Software support

A support agreement ensures that your FormWeigh.Net® system is always running at an optimum performance level. Regular maintenance and updates keep your system up-to-date and guarantee maximum system availability. This protects the investment you made and mitigates against costly upgrades in the future.



## Computer system validation

Validation is an absolute must in regulated industries. Right from day one, FormWeigh.Net® was developed to allow efficient and seamless system validation. METTLER TOLEDO offers comprehensive validation documentation (CSV Pac) for supplier audits and IQ/OQ. Experienced and fully trained validation specialists can assist you in this process.

**ServiceXXL®**

Tailored Services

[www.mt.com/formulation](http://www.mt.com/formulation)

For more information

### USA

Mettler-Toledo, Inc.  
1900 Polaris Parkway  
Columbus, OH, 43240  
Tel. (1) 800 523 5123

### Canada

Mettler-Toledo, Inc.  
2915 Argentia Road, Unit 6  
Mississauga, Ontario, L5N 8G6  
Tel. (1) 800 523 5123

### Rest of World

Mettler-Toledo AG  
CH-8606 Greifensee  
Switzerland  
Tel. + 41 44 944 22 11

Subject to technical changes  
© 04/2010 Mettler-Toledo AG  
Printed in Switzerland  
MTSI 30004247