

English

Installation instructions

ErgoClip Sieve for XP/XS/XA – L platform precision balances for 450 mm Sieves

Deutsch

Montageanleitung

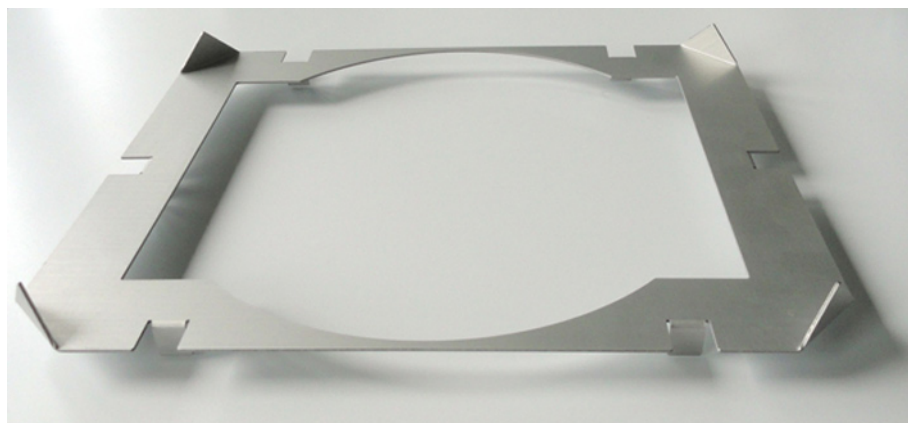
ErgoClip Sieb für XP/XS/XA – L Plattform Präzisionswaagen für 450 mm Sieb

Français

Notice de montage

ErgoClip Sieve pour XP/XS/XA – L platform précision balances pour 450 mm Sieves

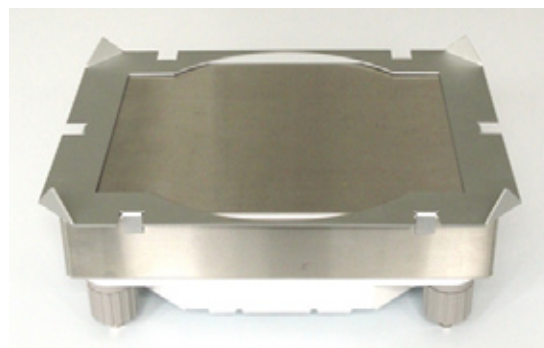
- 1** Equipment
Lieferumfang
L'équipement



- 2** Important: Switch balance off!
Wichtig: Waage ausschalten!
Important: Arrêter la balance!

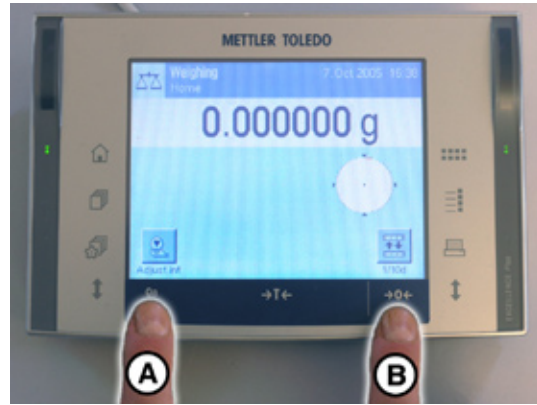


3



METTLER TOLEDO

- 4** Switch on balance (A) and set to zero (B)
Waage einschalten (A) und auf Null stellen (B)
Allumer la balance (A) et la remettre à zéro (B)



www.mt.com/excellence

For more information

Mettler-Toledo AG
Laboratory & Weighing Technologies
CH-8606 Greifensee, Switzerland

Subject to technical changes
© Mettler-Toledo AG 07/2010
30005749 33.31

