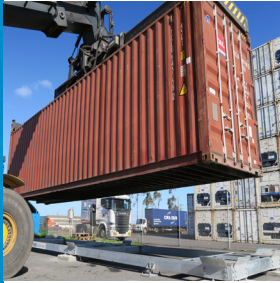


Australian Container Scale Heavy-Duty Design



Fast Container Weighing

METTLER TOLEDO's Container Scales offer a quick and easy solution for shippers to weigh the entire contents of their containers all in one simple weighing.



SOLAS Compliance

METTLER TOLEDO's Container Scale has been designed to comply with SOLAS regulations. By having the right equipment on site to meet these regulations, your business is protected from incurring hefty fines, delays in shipment and substantial losses in profit.



Accurate and Trade-Approved

METTLER TOLEDO's Container Scale meets the stringent accuracy standards of NMI (National Measurement Institute) and can be trade-approved. They also comply with the accuracy specified by SOLAS regulations.



Reliability

METTLER TOLEDO's Container Scales are equipped with POWERCELL® PDX® load cells. This provides 100% protection against the forces that eat into your profits, including extreme temperatures, lightning strikes, water and floods, rodents, rust and corrosion.



Australian Container Scale For SOLAS Compliance

As of July 1st, SOLAS (Safety of Life at Sea) regulations now require shippers to have obtained a Verified Gross Mass of their containers before reaching the port. METTLER TOLEDO's Container Scale has been uniquely designed to meet these requirements.

Built with a heavy-duty galvanised-steel frame and equipped with POWERCELL® PDX® load cells, METTLER TOLEDO's Container Scales are robust, accurate and reliable as well as having the additional benefits of being NMI Trade approved and compliant with SOLAS requirements.

METTLER TOLEDO's Container Scales are available in 20 foot or 40 foot combinations. Being a locally developed solution delivery time is also kept to a minimum.

Australian Container Scale

For SOLAS Compliance

Options

- Databridge Software
- Weight Distribution
- On-board Tablet Connectivity
- Remote Displays



Five Year Guarantee Against Lightning Damage

METTLER TOLEDO is confident in the superior craftsmanship of POWERCELL® PDX®. As such, whenever the 'Optional' Lightning Protection Kit is selected, METTLER TOLEDO will offer a five year lightning warranty including 100% replacement of parts for the PDX® POWERCELLS®.



Feature	Specification
Standard Lengths	20 ft or 40 ft
Standard Widths	8 ft
Number of PDX POWERCELLS	4 for 20 ft 6 for 40 ft
Foundations	Site-specific if required
Calibrated Capacity	30 tonnes x 10kg for 20ft 40 tonnes x 20kg for 40ft
Trade Approved	Yes
SOLAS Compliant	Yes
Load Cells	POWERCELL® PDX®

Features	Standard	Options
Galvanised Finish	x	-
SS Armoured Cables	x	-
Weighing IND 246	x	-
Lightning Protection Kit	-	x
Data Management Software	-	x
Weight Distribution	-	x
On-board Tablet Connectivity	-	x
Remote Displays	-	x
Weighing IND 560/ 780	-	x

Victoria New South Wales Queensland South Australia Western Australia	Mettler-Toledo Limited 220 Turner Street, Port Melbourne 3207 1/79 Newton Road, Wetherill Park 2164 Unit 2, 80 Ebberrn Street, Darra 4076 29 Walsh Street, Thebarton 5031 91 Holder Way, Malaga 6090
---	--

© 08/2016 Mettler-Toledo Limited
 Printed in Australia IND2582016

www.mt.com

For more information