

35	20	MZ0901010609 MZ0901010065	HHCS, 1/4-20 x 1 3/4", SS (-1 KOP) HHCS, 1/4-20 x 3/4", SS (-3 KOP)
34	10	TN202152	SIDE COVER CLAMP PLATE
33	10	TA202172	SIDE COVER
32	2	TN203217	LUBRICANT, LOADCELL-RECEIVER
31	38	TN203216	ANCHOR BOLT
30	1	TN203056	CONNECTOR DIELECTRIC COMPOUND
29	1	TB202627	CONNECTOR CLEANER
28	1	MZ0602000117	LOCTITE #242 THREADLOCKER
27	10	TA200814	BOTTOM HEX RECEIVER
26	10	TA200764	TOP RECEIVER WITH O-RING
25	10	TA200712-3	RECEIVER SHIM 7 GA (.187")
24	20	TA200712-2	RECEIVER SHIM 16 GA (.060")
23	20	TA200712-1	RECEIVER SHIM 11 GA (.120")
22	4	TA200357-3	SLOTTED SHIM 22 GA (.030")
21	4	TA200357-2	SLOTTED SHIM 16 GA (.060")
20	4	TA200357-1	SLOTTED SHIM 11 GA (.120")
19	6	TN202990-2	COUPLER SHIM 16 GA (.060")
18	3	TN202990-1	COUPLER SHIM 11 GA (.120")
17	2	TA200856-3	END BUMPER SHIM 16 GA (.060")
16	2	TA200856-2	END BUMPER SHIM 11 GA (.120")
15	3	TA200856-1	END BUMPER SHIM 1/4"

ITEM	QTY	PART NUMBER	DESCRIPTION
HARDWARE KIT OF PARTS: TC205384-1			
KOP TC205384-2 DOES NOT INCLUDE ITEMS 33, 34, OR 35.			

SIZE & CONFIGURATION					DIMENSIONAL CHART							
SCALE SIZE	FIRST	MIDDLE	MIDDLE	TERMINAL	MINIMUM FOUNDATION OPENING ("A")	DECK LENGTH "B"	TOTAL L/C "C"	"D"	"E"	"F"	"G"	
70'	17.5'	17.5'	17.5'	17.5'	70'-2"	70'-0"	69'-6"	17'-4 1/2"	17'-4 1/2"	17'-4 1/2"	17'-4 1/2"	
75'	17.5'	20'	20'	17.5'	75'-2"	75'-0"	74'-6"	17'-4 1/2"	19'-10 1/2"	19'-10 1/2"	17'-4 1/2"	
80'	20'	20'	20'	20'	80'-2"	80'-0"	79'-6"	19'-10 1/2"	19'-10 1/2"	19'-10 1/2"	19'-10 1/2"	
86.5'	20'	23.3'	23.3'	20'	86'-9"	86'-7"	86'-1"	19'-10 1/2"	23'-2"	23'-2"	19'-10 1/2"	
87.5'	23.3'	23.3'	17.5'	23.3'	87'-6 1/2"	87'-4 1/2"	86'-10 1/2"	23'-2"	23'-2"	17'-4 1/2"	23'-2"	
90'	23.3'	23.3'	20'	23.3'	90'-0 1/2"	89'-10 1/2"	89'-4 1/2"	23'-2"	23'-2"	19'-10 1/2"	23'-2"	
93'	23.3'	23.3'	23.3'	23.3'	93'-4"	93'-2"	92'-8"	23'-2"	23'-2"	23'-2"	23'-2"	

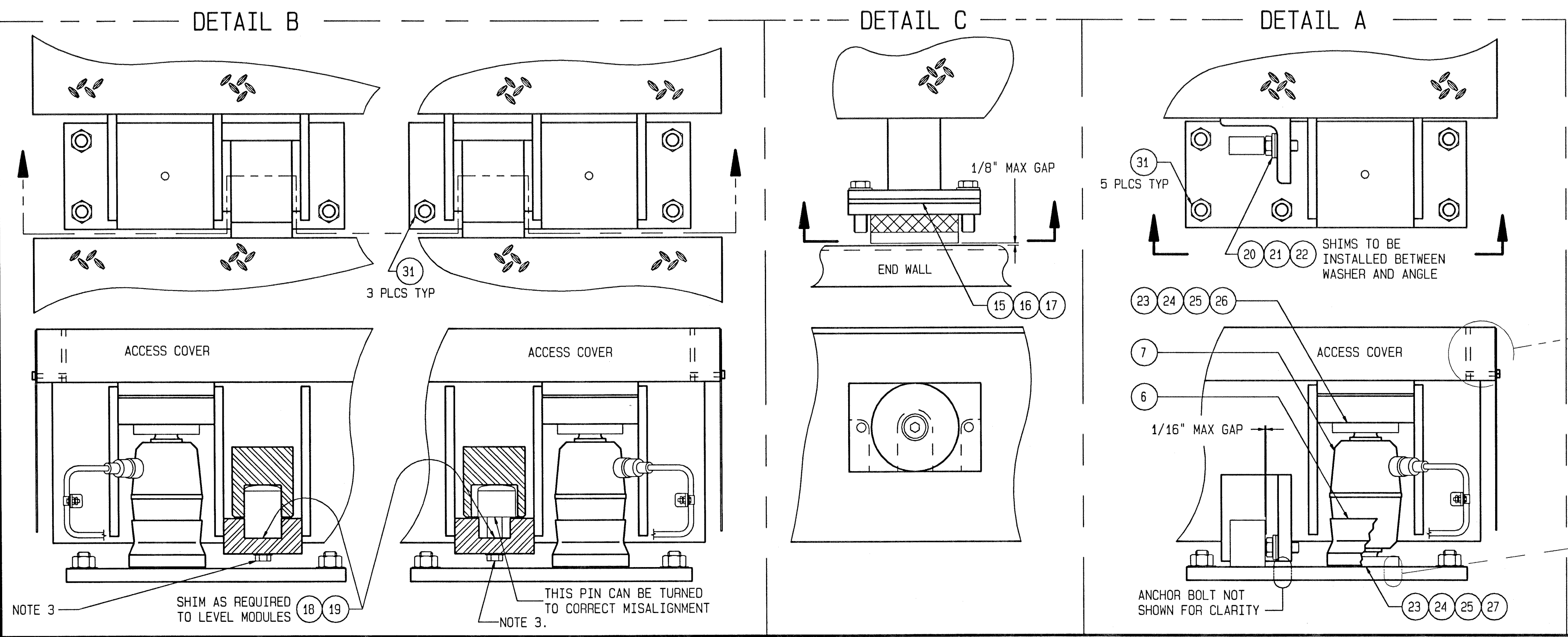
AVAILABLE AS 3-MOD.

NOTES:

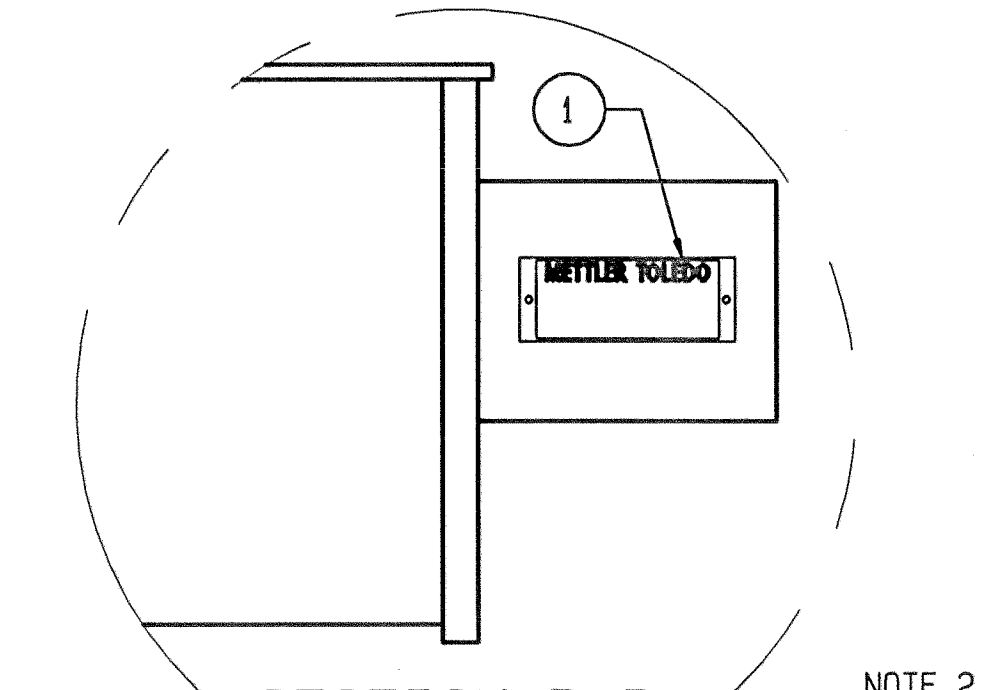
- FOUNDATION LENGTH DIMENSION SHOWN IS NOMINAL, ACTUAL TOLERANCE IS -0 +1".
- MODULE SUFFIX IS USED TO DESIGNATE MODULE ASSEMBLY, HARDWARE AND WIRING CONFIGURATION. HAZARDOUS CONFIGURATION IN PARENTHESIS
- APPLY LOCTITE #242 TO ALL GAP COVER AND SIDE COVER BOLTS. IF COUPLER PINS ARE REMOVED, APPLY LOCTITE & TORQUE 1/3 TURN PAST SNUG.
- APPLY A 1/4" BEAD OF DIELECTRIC COMPOUND IN THE MALE CONNECTOR OF LOAD CELL BEFORE FINAL CONNECTION.
- IF DIELECTRIC COMPOUND BECOMES CONTAMINATED, CLEAN CONNECTOR WITH TB202627 CONNECTOR CLEANER. REAPPLY NEW COMPOUND TO THE CONNECTOR.

NOTES FOR HAZARDOUS AREA WIRING:

H1. THE HAZARDOUS AREA WIRING AND LIGHTNING PROTECTION KIT IS SPECIFIC FOR THE SUPPLY VOLTAGE AND THE INDICATOR USED. IT MUST BE INCLUDED FOR INTRINSICALLY SAFE COMPLIANCE IN HAZARDOUS LOCATIONS.

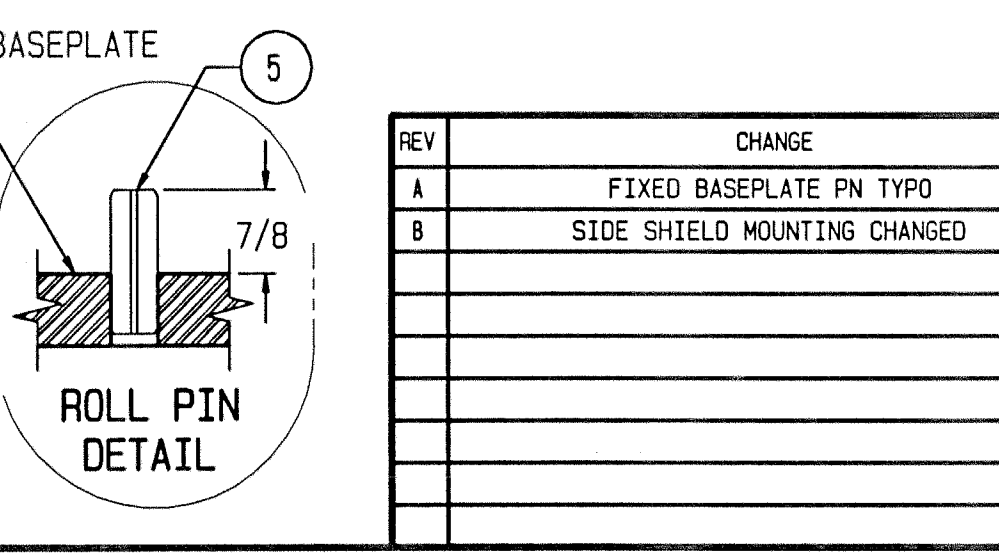
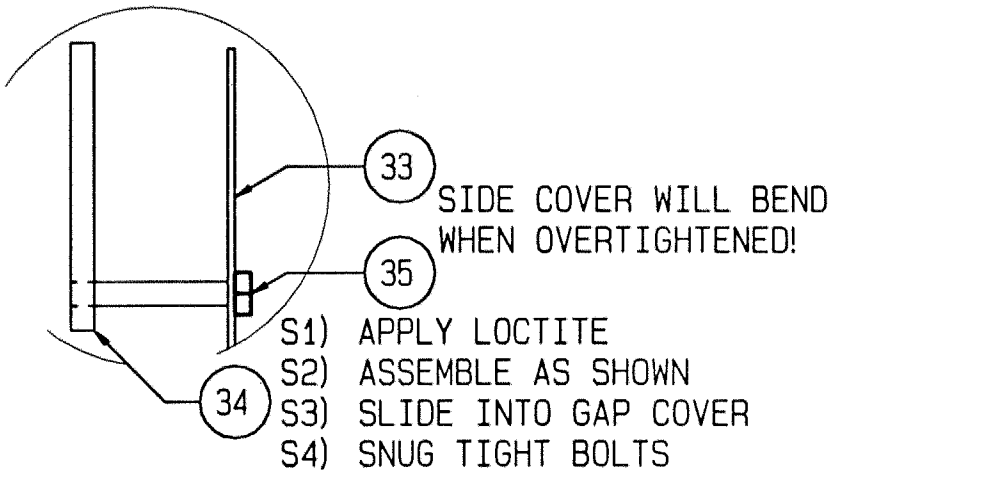


IMPORTANT:
THE INTERIOR SURFACE OF ALL LOAD CELL RECEIVERS (BOTH TOP AND BOTTOM) MUST BE GREASED WITH TN203217 DURING CELL INSTALLATION.



BY METTLER TOLEDO: DRILL TWO #29 HOLES IN SUPPORT TUBE AND FASTEN DATA PLATE WITH 1/8" ALUMINUM AB4-4 POP RIVETS (MZ0904000031).

* LETTER PREFIX SUBJECT TO CHANGE.



ITEM	QTY	PART NUMBER	DESCRIPTION
13	1	TC205384-1 TC205384-2 TC205384-3	HARDWARE KIT OF PARTS HARDWARE KOP FOR PIT SCALES HARDWARE KOP FOR 9'10" WIDE SCALES
12	1	TN204213	TOUCH-UP PAINT KIT
11	1	REF 3Z SUFFIX REF 3Z SUFFIX	STANDARD TERMINAL MODULE HAZARDOUS TERMINAL MODULE
10	1	REF 2B SUFFIX REF 2C SUFFIX	STANDARD MIDDLE MODULE HAZARDOUS MIDDLE MODULE
9	1	REF 2A SUFFIX REF 2Z SUFFIX	STANDARD MIDDLE MODULE HAZARDOUS MIDDLE MODULE
8	1	REF 1F SUFFIX REF 1K SUFFIX	STANDARD FIRST MODULE HAZARDOUS FIRST MODULE
7	10	*14002900A *15475900A	LOAD CELL, POWERCELL, 45mt CAPACITY LOAD CELL, MTX, 45mt CAPACITY
6	10	TN203173 TN203705	GASKET - USE W/ 760 LOAD CELL BOOT - USE W/ MTX
5	10	MZ0904000063	Ø 1/2 ROLL PIN, 1-1/2" LONG
4	2	TB200929-4	BASEPLATE, RIGHT BUMPER
3	2	TB200929-3	BASEPLATE, LEFT BUMPER
2	6	TB200929-2	BASEPLATE, NO BUMPER
1	1	MN31004	DATA PLATE

MAJOR BILL OF MATERIAL

REV	CHANGE	BY	DATE	SCALE
A	FIXED BASEPLATE PN TYPO	MDP	03/25/03	25
B	SIDE SHIELD MOUNTING CHANGED	MDP	12/07/05	DRN MDP APPD

DATE: 02/05/03
TITLE: 7562C GENERAL LAYOUT, 4-MODULE SCALES.

UNLESS OTHERWISE SPECIFIED, ALL DIMENSIONS ARE IN INCHES, AND DIMENSIONAL TOLERANCES ARE:
FRACTIONAL DECIMAL ANGULAR
1/32 .XX ±.02 ±.5"
.XXX ±.005

METTLER TOLEDO

THIS PRINT IS FURNISHED WITH THE UNDERSTANDING THAT THE ESSENCE THEREOF WILL NOT BE REPRODUCED IN WHOLE OR IN PART WITHOUT WRITTEN AUTHORIZATION OF METTLER TOLEDO, INC. ALL DESIGNS ARE THE PROPERTY OF METTLER TOLEDO, INC. AND WILL BE PROTECTED BY PATENTS.

TC205384 REV B