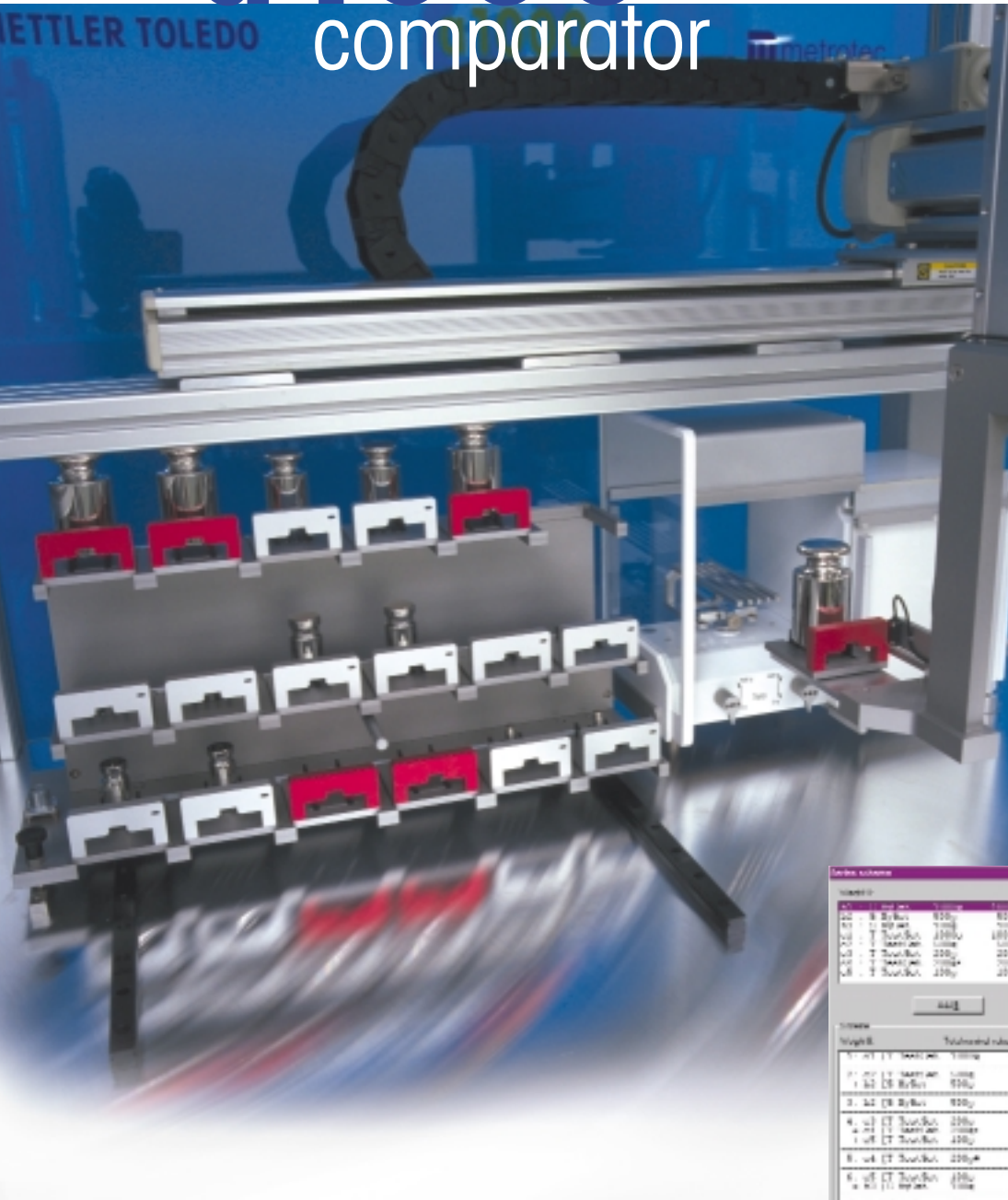


# The automated weighing solution up to 1 kg

## a1000 comparator

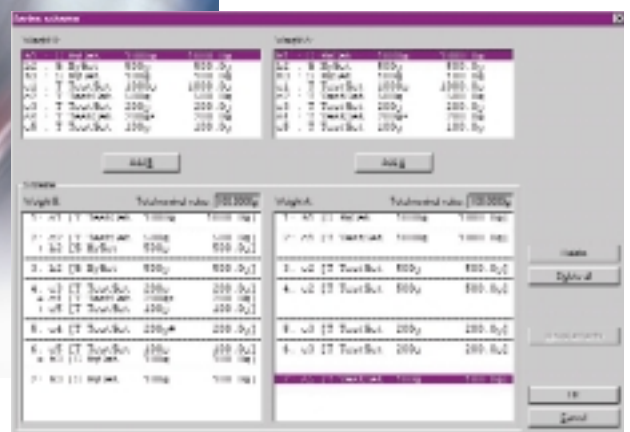


### AX1005 with automated weight handler.

For automatic determination of test weights, by comparison of one test weight with one standard, or by downward (upward) calibration; comparison between combinations of up to three knob weights.

### a1000 comparator software makes it easy

- easy monitoring of weighing process
- easy data acquisition
- easy “one-vs-one comparison”
- easy “down-/upward calibration”
- easy adjustment of the balance
- Full and comprehensive report
- Database
- automatic report generation



# Weighing process with a 1000 comparator is:

- More accurate
- More efficient
- More precise

## Technical Specification

### METTLER TOLEDO a1000 comparator

Readability	0.01 mg
Maximum capacity	1109 g
Electrical weighing range	109 g
Repeatability	Determined as standard deviation of 10 "one-vs.-one" comparative weighings, after drift elimination: s = 0.01 mg, typical value = 0.005 mg

#### Automated weight handler

For automatic determination of test weights, by direct comparison of one test weight with one standard, or, as an option, by downward or upward calibration – comparison between combinations of up to three weights

Measuring time (typical)	15 min for a series of 5 "one-vs.-one" A-B-A comparative weighings, 30 min. for a series of 5 "three-vs.-one" A-B-A comparative weighings
Test weights/standards	Cylindrical 10 g – 1000 g weights, with following geometry: Single weight and 2-weight combination: 10 $\leq$ diameter $\leq$ 60 mm, height $\leq$ 85 mm 3-weight combination: 10 $\leq$ diameter $\leq$ 38 mm, height $\leq$ 85 mm

Weight magazine	18 places
Control software	Microsoft Windows-based a1000 control with most attractive features, comfortable user interface, flexible determination of weighing schemes, reports in spreadsheet and text format.
Data interface	RS232C to controller

#### Admissible ambient conditions

Temperature	17 – 27 °C ( $\pm 0.5$ °C/hour)
Relative humidity	40 – 70% ( $\pm 5\%$ )

#### AC adapter

<b>Voltage</b>	
Balance control unit	115V/230V (–20% – +15%)
Robot system control unit	115V/230V (–20% – +15%)

#### Frequency

Balance control unit	50 Hz/60 Hz
Robot system control unit	50 Hz/60 Hz

#### Power consumption

Balance	15.5 VA max.
Handler	150 VA max.

#### Dimension (w x d x h)/net weight

Handler and balance	1430 x 890 x 1730 mm/308 kg
---------------------	-----------------------------

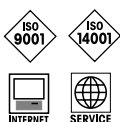


#### AX1005:

- high readability
- high repeatability
- high precision
- high quality

#### a1000 comparator content is:

- special AX1005
- weights magazin (18 positions)
- weight carriers 2 designs
- automatic handler
- a1000 control software



Quality certificate ISO 9001  
 Environmental certificate ISO 14001  
 Internet: <http://www.mt.com>  
 Worldwide service

Subject to technical changes  
 © 12/02 Mettler-Toledo GmbH  
 Printed in Switzerland 11795315  
 MCG MarCom Greifensee