
JX01

Operator Interface

Color Display

Ethernet Connectivity

Designed for Industrial Environments



Programmable Graphical User Interface for JagXtreme Scale Terminals

METTLER TOLEDO



JAGXTREME

JXOI Graphical Operator Interface

- Color Display, 240 x 320 pixel
- User-Definable Layout and Function Keys
- Perfect for Batching, Filling, Data Collection, Vehicle, and Shipping Applications
- Ethernet Connectivity

Mettler-Toledo USA

1900 Polaris Parkway
Columbus, Ohio 43240
TEL. (800) 523-5123
(614) 438-4511

Mettler-Toledo, Canada

TEL. (800) 263-6593

Mettler-Toledo S.A., Mexico

TEL. 52 55 5547 1634

Mettler-Toledo, Australia

TEL. (61) 3 9644 5730

Mettler-Toledo, China

TEL. +86 519 664 2040

For all other countries:

Mettler-Toledo GmbH

Greifensee, Switzerland
TEL. +41-1-944 22 11,
Fax: +41-1-944 31 70

Subject to change without notice.

©2004 Mettler-Toledo Inc.



I02-IN033376.1E

Because today's industries demand equipment that offers instant understanding of the weighing process, METTLER TOLEDO® has developed the **JAGXTREME Operator Interface (JXOI)**. The JXOI is a new tool that provides state-of-the-art visual representation, allowing fast and intuitive system management.

Visual Cues such as large images, background/foreground colors and animated objects provide familiar symbols for even the most sophisticated information.

Color Displays reflect true colors in different shades, hues and intensities. Weighing Centric Objects provide data for multiple scale platforms on one screen.

Ethernet Connectivity allows connection to any local area network (LAN) for interface to any JAGXTREME or to the development tool, XTREMEBUILDER.

User-Definable Layout with XTREMEBUILDER, an object-based WYSIWYG tool, allows easy selection from a library of objects. System information displays graphically using bar graphs, bitmaps, and animation.

Emulation Mode for simulation on a local PC allows JXOI applications to be run on a PC prior to downloading to the terminal.

Function Keys simplify complex weighing sequences for increased efficiency and accuracy. Multiple programs can be stored and accessed on a single unit via function keys.

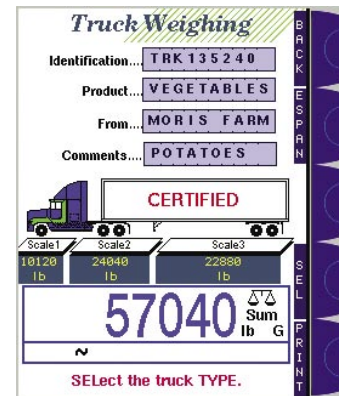
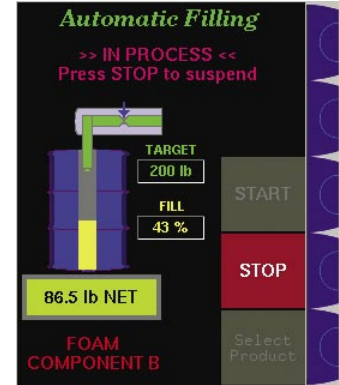
Designed for Industrial Environments, the JXOI is constructed to withstand the most severe environments. The JXOI is available in three packages – pedestal, panel-mount, and an integrated JXOI with JAGXTREME scale terminal (JXHG).

To find out how the METTLER TOLEDO JAGXTREME technology can help manage your processes, contact METTLER TOLEDO at:

Web: www.mt.com/industrial

E-mail: indinfo@mt.com

Call free: 1-800-523-5123



Your Mettler-Toledo representative