

Part No. 52 206 282

Oxygen Transmitter O2 4300 D

Instruction Manual

METTLER TOLEDO

The logo graphic consists of a series of parallel, slightly curved lines that create a sense of depth and movement, resembling a stylized 'M' or a series of steps. The lines are black and set against a white background.

IMPORTANT SAFETY INFORMATION

- Follow all warnings, cautions, and instructions indicated on and supplied with this product.
- Install equipment as specified in this instruction manual. Follow appropriate local and national codes.
- Use only factory documented components for repair. Tampering or unauthorized substitution of parts and procedures can affect the performance and cause unsafe operation of your process.
- Protective covers must be in place unless qualified personnel are performing maintenance.
- If this equipment is used in a manner not specified by the manufacturer, the protection provided by it against hazards may be impaired.

WARNINGS:

- Installation of cable connections and servicing of this product require access to shock hazard voltage levels.
- Main power and relay contacts wired to separate power source must be disconnected before servicing.
- Main power must employ a switch or circuit breaker as the disconnecting device for the equipment.
- Electrical installation must be in accordance with the National Electrical Code and/or any other applicable national or local codes.
- Safety and performance require that this instrument be connected and properly grounded through a three-wire power source.
- RELAY CONTROL ACTION: the O2 4300 D instrument relays will always de-energize on loss of power, equivalent to normally open state, regardless of relay state setting for powered operation. Configure any control system using these relays with fail-safe logic accordingly.
- PROCESS UPSETS: Because process and safety conditions may depend on consistent operation of this instrument, provide appropriate means to maintain operation during sensor cleaning, replacement or sensor or instrument calibration.

This instrument complies with the safety standards as outlined on our Ratings.

This manual includes safety information with the following designations and formats:

WARNING: POTENTIAL FOR PERSONAL INJURY

CAUTION: possible instrument damage or malfunction

NOTE: important operating information

Definition of Equipment Symbols



On the instrument indicates: Caution, risk of electric shock



On the instrument indicates: Caution (refer to accompanying documents)



On the instrument indicates: There is alternating current (AC) present.

TABLE OF CONTENTS

CHAPTER 1: INTRODUCTION 1

AT THE VERY BEGINNING	1
INTENDED USE	1
DESCRIPTION OF UNIT	1
MEASUREMENT AND CONTROL SYSTEM	2

CHAPTER 2: INSTALLING THE O2 4300 D 3

UNPACKING	3
INSTRUMENT DESCRIPTION	3
<i>Front Panel</i>	4
<i>Rear Panel</i>	4
INSTRUMENT INSTALLATION	4
INSTRUMENT INSTALLATION	5
<i>Panel Mount</i>	5
<i>Wall Mount</i>	5
CONNECTIONS.....	6
<i>Input Power</i>	6
<i>Sensor Connections</i>	6
<i>Other Connections</i>	7
INITIAL START UP.....	8
<i>Display Contrast Adjustment</i>	8

CHAPTER 3: GETTING STARTED 9

OPERATING MODES	9
<i>Measure Mode</i>	9
<i>Menu Mode</i>	9
USING THE DISPLAY AND KEYPAD	10
<i>Display</i>	10
<i>Keypad</i>	10
<i>Data Entry</i>	11

CHAPTER 4: USING MENUS 12

INTRODUCTION	12
MAIN MENU.....	12
<i>Access</i>	12
<i>Exit</i>	12
PARAMETER SET MENU	13
<i>Parameter Set</i>	13
<i>Units</i>	13
<i>Name</i>	13
<i>Filter</i>	13
FACTORY DATA AND CALIBRATION MENU	13
MILLIAMPER (mA) OUTPUTS MENU	13
<i>mA Output #</i>	14
<i>Scaling Type</i>	14
<i>Low Value (signal level)</i>	14
<i>0/4 mA (scaling limit)</i>	14

<i>Mid (Bi-linear scaling only)</i>	14
<i>20 mA (scaling limit)</i>	14
<i>Num of Decades (logarithmic scaling only)</i>	14
<i>On failure 22 mA</i>	14
<i>Current Out</i>	14
SET HOLD MODE	15
<i>HOLD state</i>	15
RELAYS MENU	15
<i>Select Relay</i>	15
LIMIT 1 AND 2	16
<i>Signal</i>	16
<i>Value</i>	16
<i>Delay</i>	16
<i>Hysteresis</i>	16
<i>Set Point</i>	16
<i>State</i>	16
ALARM.....	16
<i>Delay</i>	16
<i>State</i>	16
WASH.....	16
<i>Interval</i>	16
<i>Wash time</i>	16
<i>State</i>	17
SAVE/RECALL MENU.....	17
<i>Select</i>	17
<i>P-Set</i>	17
RESET MENU	17
<i>System</i>	17
<i>P-Set</i>	17
<i>Cal</i>	17
DIAGNOSTICS MENU.....	18
<i>Transmitter</i>	18
<i>Sensor</i>	18
OTHER MENUS.....	19
<i>Language MENU</i>	19
<i>Security MENU</i>	19
<i>Set Date/Time</i>	19
<i>Set Unit Name</i>	20
<i>Lost Passwords</i>	20
<i>RS232 set-up</i>	20
<i>Print Configuration</i>	20
<i>Software Revs</i>	20
<i>Service Only</i>	20

CHAPTER 5: FACTORY DATA AND CALIBRATIONS 21

INTRODUCTION.....	21
CALIBRATION TYPES	21
<i>Factory Calibration (Factory Data)</i>	21
<i>If you later on perform a Process Calibration, the original factory calibration data can be re-activated by the "Choose" command in the Calibration menu</i>	21
<i>Single-Point Calibration</i>	21

<i>Dual-Point Calibration</i>	22
<i>Process Calibration Adjustment</i>	22
CALIBRATION MENU .. FEHLER! TEXTMARKE NICHT DEFINIERT.	

CHAPTER 6: MAINTENANCE & TROUBLESHOOTING 24

MAINTENANCE.....	24
<i>Front Panel Cleaning</i>	24
ISM FUNCTIONALITY	24
TROUBLESHOOTING CHECKLIST	24
ERROR MESSAGES	25

CHAPTER 7: UPGRADE 26

UPGRADES.....	26
<i>Main program Software Upgrade</i>	26
<i>Procedure</i>	26

CHAPTER 8: ACCESSORIES AND SPARE PARTS 28

ACCESSORIES	28
SPARE/REPLACEMENT PARTS	28

APPENDIX A: MENU TREES 29

CALIBRATION MENUS	30
CALIBRATION MENUS	30
MA OUTPUTS MENUS	31
RELAYS MENUS	32
SAVE/RECALL MENUS.....	33
RESET MENUS.....	34
DIAGNOSTICS MENUS	35
DIAGNOSTIC SUBMENU	36
OTHER MENUS.....	38

APPENDIX B: SET-UP PARAMETER RECORD 39

MEASUREMENT PARAMETERS RECORD 1/2	39
MEASUREMENT PARAMETERS RECORD 2/2	40

APPENDIX C: SPECIFICATIONS 41

APPENDIX D: RATINGS 44

<i>Declaration of Conformity</i>	44
<i>UL Recognition</i>	44

APPENDIX E: WARRANTY 45

INTRODUCTION

AT THE VERY BEGINNING

We thank you for having purchased the METTLER TOLEDO Oxygen Transmitter O2 4300 D.

This manual covers routine operation, service and communication of the O2 4300 D.

The instruction manual must always be stored close at hand, in a place accessible to all persons working with the Oxygen Transmitter O2 4300 D.

If you have questions, which are not or insufficiently answered in this instruction manual, please contact your METTLER TOLEDO supplier. They will be glad to assist you.

INTENDED USE

The METTLER TOLEDO Oxygen Transmitter O2 4300 D combined with the sensor InPro 6880i are intended solely for measurements in liquids, as described in this instruction manual. Any other use, or use not mentioned here, that is incompatible with the technical specifications is deemed inappropriate. The operator is solely responsible for any damage arising from such use.

Other prerequisites for appropriate use include:

- Observing the instructions, notes and requirements set out in this instruction manual.
- Observing all local safety regulations concerning safety at work.
- Observing all information and warnings in the documentation dealing with products used together with the transmitter (sensors, housings etc.)
- Observing the prescribed environmental and operational conditions

DESCRIPTION OF UNIT

The O2 4300 D is a transmitter for high accuracy measurement and control. It accepts input from METTLER TOLEDO InPro 6880i sensor only.

The measuring system can be used for applications in the beverage industry and brewery processes.

A METTLER TOLEDO Oxygen system consists of:

- **O2 4300 D transmitter** (100...240 VAC or 20...32 VDC power supply)
- **InPro 6880i sensor**

The present manual describes the operation of both, 100... 240 VAC and 20...32 VDC power supply version. Furthermore it contains information on the sensor:

For detailed information on installation, operation and maintenance of InPro6880i sensor please refer to the sensors manual which is delivered with every sensor. You can also download the manuals on our Website (www.mt.com).

A system consisting of the O2 4300 D transmitter and an optical InPro6800i sensor:

The transmitter has many user-friendly and safety features which include:

- RS-485 interface to the sensor
- RS-232 interface for data transfer of configurations and software updating
- Process Calibration procedure
- three retrievable, independently configurable Parameter Sets with remote access via digital inputs
- full text menu guide in three languages
- online help texts
- menu password protection on two levels
- four 0/4...20 mA outputs galvanically isolated from the measurement circuitry according to NAMUR NE43 guideline
- 2 programmable limit setpoints, 1 alarm relay (SPDT type)
- HOLD input and Wash contact (SPDT type)

Oxygen measurements take advantage of the interaction of a fluorescing chromophor light and dissolved oxygen .

The light source and the detector are placed in the sensor. The receiving silicon photodiodes are placed in the sensor as well. The produced photocurrents are converted to Oxygen values in the sensor and the resulting Oxygen values are transferred to the transmitter.

The METTLER TOLEDO InPro 6880i Oxygen sensors are based on the so call fluorescence quenching technology. The signals of the reference beam and the fluorescence will be processed by the sensor and the Oxygen concentration is calculated. The Oxygen concentrations are displayed on the transmitter. These values can be converted into a 0-20mA (4-20mA) signal at the current output of the transmitter.

With increasing Oxygen the phase shift between the excitation light and the fluorescence decreases.

MEASUREMENT AND CONTROL SYSTEM

A typical measurement system consists of:

- Oxygen process transmitter O2 4300 D
- A sensor InPro6880i/D
- A final control element such as pump or valve
- Device for recording measured values

CHAPTER 2: INSTALLING THE O2 4300 D

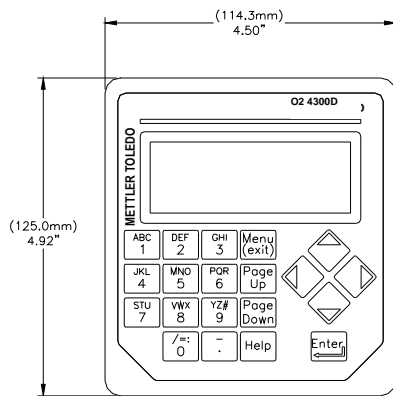
UNPACKING

Carefully unpack the O2 4300 D, the carton should contain:

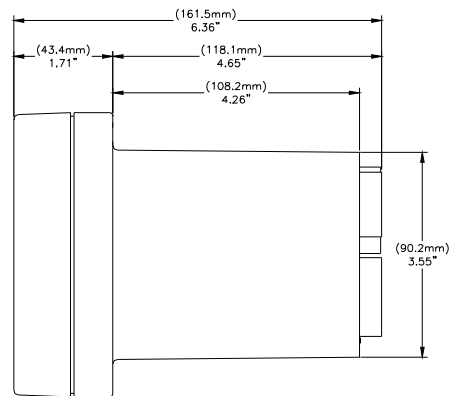
- O2 4300 D instrument
- O2 4300 D Instruction Manuals (English, French and German versions)
- mounting screws, 4 pcs.
- panel mounting gasket
- Connector blocks for TB2 to TB7

INSTRUMENT DESCRIPTION

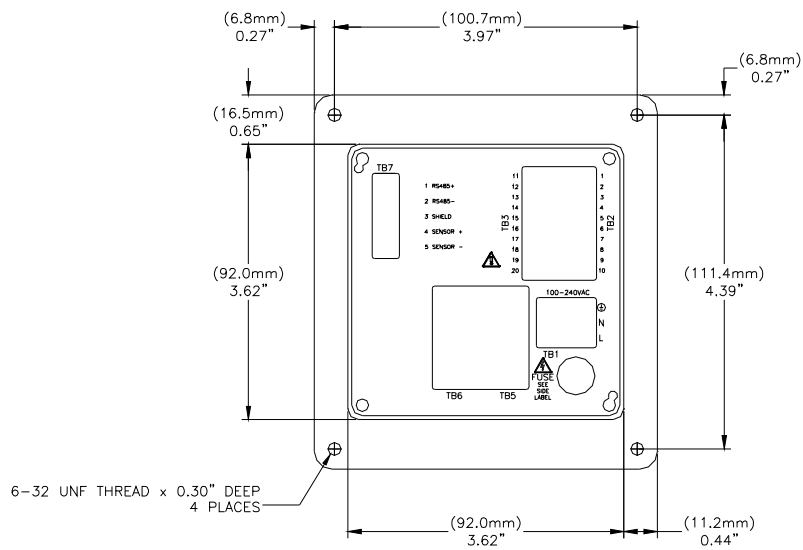
Shown below are the O2 4300 D enclosure dimensions:



front dimensions – [mm] inches



side dimensions – [mm] inches



rear dimensions – [mm]
inches

front panel

Rear Panel

All electrical, relay, input, output, and communication connections are made via the rear panel of the O2 4300 D. See **CONNECTIONS** later in this section.

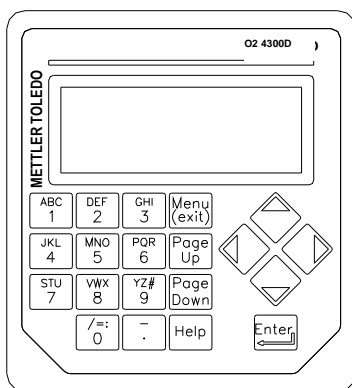
Front Panel

Display:

The backlit LCD display has four lines of 20 characters each.

Keypad:

The keypad consists of 9 function keys and 11 alphanumeric entry keys. See **Chapter 3: Getting Started** for a detailed description of each key.



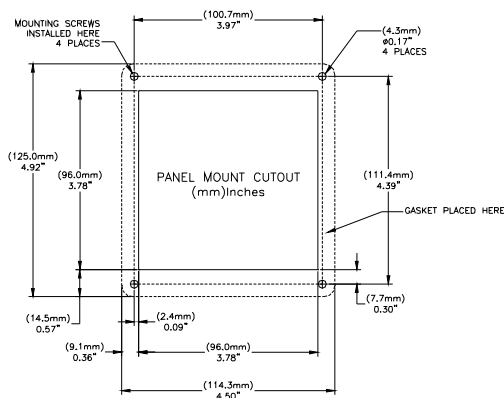
INSTRUMENT INSTALLATION

Panel Mount

The O2 4300 D is supplied with four mounting screws and a gasket to provide a seal at the panel cutout.

To mount the O2 4300 D in an instrument panel:

1. Use the illustration below to mark panel cutouts.



panel cutout – [mm] inches

If multiple instruments are to be mounted in the same panel, allow enough space for the flanges to overlap the panel between instruments (dotted outline).

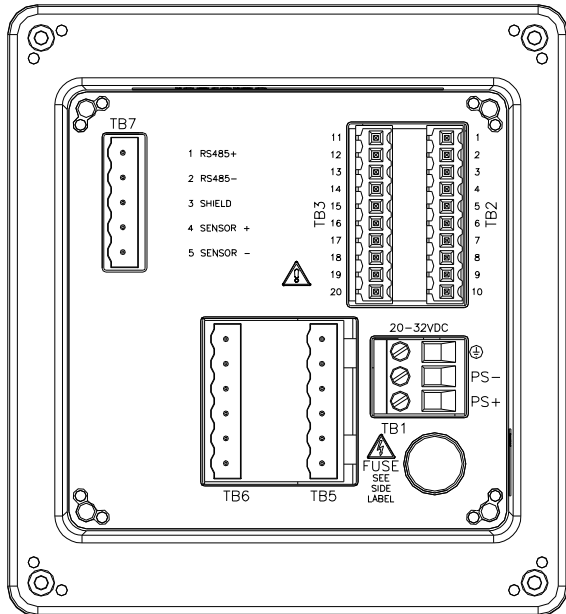
2. Make the panel cutout and drill the mounting screw holes; all cutouts should be clean and free of burrs.
3. Remove the backing paper and slide the adhesive gasket onto the rear of the instrument flange. Align it evenly and press into place. The two small pins near each screw hole are intended to control compression of the gasket for optimum sealing.
4. Slide the O2 4300 D into the panel and secure with four 6-32 mounting screws (supplied) from the back.

Wall Mount

For wall mounting the transmitter O2 4300 D needs to be installed in an additional stainless steel IP66 (NEMA 4X) field housing (METTLER TOLEDO part number 52 800 867).

CONNECTIONS

All connections are made via the rear panel. InPro 6880i cable wires are marked with corresponding numbers found on TB7. Outputs on TB2 and TB3 include 4 analog outputs, RS485 plus 4 discrete inputs. Four relays are on TB5 and TB6.



rear panel terminal boards

WARNING: MAKE SURE POWER TO ALL WIRES IS TURNED OFF BEFORE PROCEEDING WITH THE INSTALLATION. HIGH VOLTAGE MAY BE PRESENT ON THE INPUT POWER WIRES AND RELAY WIRES.

For TB5 and TB6 relay terminals use 26 AWG (0.126 mm²) to 14 AWG (2.08 mm²). If more than one wire has to be connected to a terminal, wire size must be further limited.

Input Power

The O2 4300 D can be delivered in 2 versions.

part number 52 206 264 has a universal power supply for operation in the range of 100-240 VAC, 47-63 Hz.

part number 52 206 248 has a power supply for 24 VDC

Terminal block TB1 provides the connections for the input line power. See above section for wire sizes. Turn the terminal screws fully counterclockwise, then insert the appropriate wire into its terminal and securely tighten adjacent screw.

CAUTION: a full 0.5 in. (13 mm) of bare conductor must be exposed for reliable power connection to these deep terminals. This is much more than is

required for other terminals. For AC power, make connections as follows:

Board	Terminal	Connection
TB1	⊕	Earth ground
	N	AC power, neutral
	L	AC power, hot

The O2 4300 D, part number , has a universal power supply for operation in the range of **20...32 VDC**.

Terminal block TB1 provides the connections for the input line power. See above section for wire sizes. Turn the terminal screws fully counterclockwise, then insert the appropriate wire into its terminal and securely tighten adjacent screw.

CAUTION: a full 0.5 in. (13 mm) of bare conductor must be exposed for reliable power connection to these deep terminals. This is much more than is required for other terminals. For AC power, make connections as follows:

Board	Terminal	Connection
TB1	⊕	Earth ground
	PS-	DC power, minus
	PS+	DC power, plus

WARNING: MISWIRING THE POWER MAY CAUSE A HAZARD, DAMAGE THE INSTRUMENT AND WILL VOID ALL WARRANTIES.

Sensor Connections

The connection between InPro 6880i sensor and O2 4300 D transmitter is performed with a RS 485 cable. It is available from METTLER TOLEDO in 3 lengths:

52 300 379	2m InPro6880i Sensor cable (6.56 ft.)
52 300 380	5m InPro6880i Sensor cable (15 ft.)
52 300 381	10m InPro6880i Sensor cable (30 ft.)

Board	Terminal	Connection	
TB 7	1	RS 485 +	White
	2	RS 485 -	Blue
	3	Shield	Grey and yellow
	4	Sensor +	Brown
	5	Sensor -	black

Other Connections

Each connection terminal and terminal block are labeled by number. The following tables identify each connection.

Board	Terminal	Connection
TB2	1	Do not use !
	2	Return Parameter Set A, B and HOLD
	3	Do not use !
	4	Parameter Set B
	5	Do not use !
	6	HOLD
	7	Parameter Set A
	8	RS232 ground
	9	RS232 receive
	10	RS232 transmit
TB3	11	Do not use !
	12	Return Parameter Set C
	13	Parameter Set C
	14	Do not use
	15	Analog mA output 4 +
	16	Analog mA output 3 +
	17	Analog mA output -
	18	Analog mA output -
	19	Analog mA output 2 +
	20	Analog mA output 1 +
TB5	1	Alarm, normally closed
	2	Alarm common
	3	Alarm, normally open
	4	Wash, normally closed
	5	Wash, common
	6	Wash, normally open
TB6	7	Limit 1, normally closed
	8	Limit 1, common
	9	Limit 1, normally open
	10	Limit 2, normally closed
	11	Limit 2, common
	12	Limit 2, normally open

Discrete Inputs

Discrete (digital) inputs (TB2-4,6,7 and TB3-13) allow external dry isolated contacts to pull their +5V logic level to common (TB2-2 and TB3-12) to provide discrete control action within the O2 4300 D. This control may be used to hold the current (mA) outputs (see **Chapter 4** Set HOLD Mode) and to select one of three Parameter Sets .

CAUTION: Route wiring to discrete inputs away from power or switching circuits and provide shielding to an earth ground at the far end of the cable.

Current (mA) Outputs

Connections for current outputs are on TB3. Note that connections use common terminal (18) for current outputs 1 and 2 and common terminal (17) for current outputs 3 and 4. Current outputs are self-powered and have a maximum load capacity of 500 ohms.

CAUTION: Do not connect current outputs to circuits supplying power. They are already powered.

INITIAL START UP

When power is first supplied to the O2 4300 D, a message similar to the following will be displayed:

```
*****  
* *  
METTLER TOLEDO  
O2 4300 D vX.XX  
*****  
* *
```

The second line indicates the instrument main software version.

After a first time start-up of a factory-new transmitter, the instrument goes into a language menu after powering-up. Select your menu language - English, German or French

If a sensor is connected, the transmitter will auto-recognize the sensor and load sensor specific data including the factory calibration data.

If no sensor is connected, the transmitter will show "No sensor found" on the display. The menus are still accessible.

See "USING THE DISPLAY AND KEYPAD" in CHAPTER 3: GETTING STARTED to make yourself familiar with the basic operations. For detailed calibration instructions, see **Chapter 5, Factory Data and Calibration**.

After initialization and diagnostic checks, the display will go to measurement mode.

Display Contrast Adjustment

Depending on ambient lighting and temperature conditions, some adjustment of the LCD display contrast may be needed. Allow the instrument to warm up to operating conditions before making an adjustment. Loosen the two captive front panel screws and lift the front panel off. Using a fine screwdriver, adjust the small potentiometer on the left side below the display to obtain the desired contrast. Replace the front panel.

CHAPTER 3: GETTING STARTED

Please read this chapter for an overview of the O2 4300 D. It will help you understand the operating system and how to use the display and keypad for data entry.

The following chapters provide detailed information on using the O2 4300 D:

Chapter 4: Using Menus – understanding the menu system, options, and configuration for your applications.

Chapter 5: Calibrations – understanding the calibration procedure.

For help diagnosing and resolving measurement problems, see **Chapter 6: Troubleshooting**.

OPERATING MODES

The O2 4300 D has two operating modes:

- **Measure** – used to present measurement data; the instrument will usually be in this mode.
- **Menu** – used to set up the system for your specific applications and access all other operational features.

Measure Mode

Three Parameter Sets can be configured in the O2 4300 D. In display mode, the measurement of the active Parameter Set (P-Set) is displayed.

- Oxygen concentration according to the measurement units.
- Temperature

P-Sets

Parameter Sets (P-Sets) are termed A through C. In each P-Set the instrument can be configured according to the requirements of a specific application. Each configuration includes calibration, ranging of current outputs, definition of setpoints, and wash intervals and lengths. If the application changes the corresponding P-Set can be retrieved, modified and saved again if necessary. This feature is extremely helpful if the sensor is installed in a pipe in which different process liquids or process requirements have to be monitored.

In the menu Save/Recall the user can use up to 3 different parameter sets

Measurement Units

The O2 4300 D accommodates the following measurement units:

- ppb – Parts per billion
- ppm – Parts per million
- %O₂ – Percent Saturation
- g/l – grams per liter
- mg/l- milligrams per liter
- ug/l- micrograms per liter
- %Air- Percent Air saturation
- %O₂(Gas)-Percent O₂ saturation in gas
- ppm(gas)-parts per million in gas
- mbar pressure

ppm or g/l is used when the undissolved solid content has been determined by an alternative measurement, i.e. dry mass measurements of grab samples or offline measurements.

Menu Mode

Menu mode allows you to set up the O2 4300 D specifically for your applications.

The Main Menu consists of many sub-menus in a loop, which can be scrolled through for easy access. These sub-menus allow you to:

- Define Parameter Sets
- Calibrate the system
- Define current (mA) outputs
- Define limit setpoints and wash intervals
- Save/Recall Parameter Sets
- Reset different configurations
- Perform diagnostic functions
- Configure less commonly used unit functions

Each menu may consist of one or more screens, or pages, where you define the desired settings.

The remainder of this chapter describes how to use the keypad and display to define settings and enter information in menu mode.

The next chapter, **Chapter 4: Using Menus**, details the content of each menu.

USING THE DISPLAY AND KEYPAD

The O2 4300 D operating system is very straightforward, but understanding a few rules will make it easier to navigate.

Display

The four-line display provides read-out of measurement data as well as all menu screens and data entry fields.

Most display information and prompts are self-explanatory, for further assistance press **«Help»** and page down to read the message. Press **«Help»** again to return to the original screen.

If an up or down arrow is shown on the right side of the display, then more screens of information are available.

A flashing value in the display mode indicates a setpoint for that measurement has been exceeded. A high alarm condition is indicated by ">" after the value. A low alarm condition is indicated by "<".

A flashing "H" on the display indicates that the transmitter is in HOLD mode. A flashing "ProCal" in the measurement display indicates that a Process Calibration has been started and is waiting to be finished (see Chapter 5: Calibrations). Example display:

```
Measurement
P-Set A (Process1)
O2= 100 % O2
ProCal

Temp= 25°C
H
```

A letter before the measurement unit indicates a multiplier. The units multipliers are:

- m (milli) = multiply value by 0.001 (10^{-3})
- _ (units) = multiply value by 1

Keypad

The keypad consists of 9 function keys and 11 alphanumeric entry keys.

«Menu (exit)»

Press **«Menu (exit)»** to access the menu mode. Press **«Menu (exit)»** again to exit the menu mode.

«Page Up» / «Page Down»

Press **«Page Down»** to move to the next screen of information (if any). Press **«Page Up»** to move to the previous screen of information (if any). Additional screens are indicated by an up or down arrow on the right side of display.

When finished with a data entry screen, press **«Page Down»** to go to the next one.

«Help»

Press **«Help»** to view more information or instructions regarding the current screen or data entry field.

Press **«Page Up»** or **«Page Down»** as necessary to view the entire message. Press **«Help»** again to return to the original screen.

«Enter»

Press **«Enter»** to select a menu option, to select an option from a list, to complete an alphanumeric entry, or move to the next data entry field.

Arrow keys

The four arrow keys function as follows:

- **«Up»** – press to view the next item in a list of options.
- **«Down»** – press to view the previous item in a list of options.
- **«Left»** – press to move the cursor left in a line of text or numbers (may also move cursor to the previous field).
- **«Right»** – press to move the cursor right in a line of text or numbers (may also move cursor to the next field).

Alphanumeric keys

The alphanumeric keys are multi-functional. For example, the **«1»** key can be used to type the letters "A, B, C" in either upper or lower case, as well as the numeral "1."

Repetitive presses of the same key produce the different entries. Using the **«1»** key as an example:

- first press = A
- second press = B
- third press = C
- fourth press = a
- fifth press = b
- sixth press = c
- seventh press = 1 then the sequence repeats.

Notes:

The «0» key will yield the following characters: / = : ()
0

The «-» key will yield the following characters: . - + ^ _
! \$

If another letter from the **same** key is desired, the «Right» arrow key must be used to move the cursor to the next position in the data entry field.

When a **different** key is pressed, the cursor automatically moves to the next position.

If a lower case letter is selected, the next key pressed will begin the sequence with the lower case.

The «Up» and «Down» arrow keys can be used to scroll through the entire alphabet.

If the O2 4300 D is expecting a numeric entry, the first press will yield the number on the key.

Data Entry

In menu mode, each line of the display presents an option followed by a data entry field.

If a colon ":" follows the field name, use the «Up» and «Down» arrow keys to scroll through a list of options.

If an equal sign "=" follows the field name, use the alphanumeric keys to enter the required information. (See **Alphanumeric Keys** above.)

When the desired option is selected or the alphanumeric entry complete, press «Enter» to move the cursor to the next field. (When the last field on a screen has been completed, pressing «Enter» will return the cursor to the top of the screen.)

If the menu consists of more than one screen of fields, press «Page Down» to continue.

CHAPTER 4: USING MENUS

INTRODUCTION

After installation and connecting a sensor use the menu system to set up the O2 4300 D for your measurements.

First, set up the Parameter Set for each application. Then go through the rest of the menus for calibration and to set any outputs, set points, relays and other functions as necessary. Menu selections are automatically saved as you make them, although on exiting menus you can restore previous settings.

If desired, photocopy the Measurement Parameters Record form provided in **Appendix B** to record the menu options selected.

After all menu options have been set, return to display mode to view measurement readings.

MAIN MENU

The Main Menu is used for all instrument functions except the actual display of measurements. The following sub-menus are available from the Main Menu:

- **Parameter Set** – define measurement unit and name of P-Set.
- **Calibration** – select and perform the calibration routine for your measurement. This is only necessary if you do not want to work with the factory calibration.
- **Correction** – enables to correct the pressure and the salinity of the process. This is only necessary if your calibration conditions are not the same as the process conditions.
- **mA Outputs** – scale current outputs, and define HOLD mode.
- **Relays** – define limit set points, type (high, low), alarm relay action, and wash cycles.
- **Save/Recall** – activate a P-Set by recalling it or save your current settings to another P-Set.
- **Reset** – return settings to default values.
- **Diagnostic** – access a series of diagnostic testing routines.
- **Other Menus** – access to less commonly used menus.

Language – select your dialog language (English, German or French)

Set Date/Time – enter date and time.

Set Unit Name – enter a descriptive name for this instrument.

Lost Passwords – retrieve lost passwords.

RS232 Set-up – format the Data output communication parameters

Print Config – print current set-up information via the RS-485 port.

Software Revs – display revision of installed software.

Service Only – for use by METTLER TOLEDO Service personnel only.

Security – enable password protection.

Access

To access the Main Menu, press «**Menu (exit)**». If security is active, a prompt for a password will appear.

Press the «Up» or «Down» key to step through the main Menu. Press «**Enter**» to select a menu.

NOTE: Access to menu functions can be password protected for security. If you are locked out, you can still review settings but not change them. Press any alphanumeric key as the (wrong) password and press «**Enter**» to review menu settings.

Exit

After completing all data entry for one menu option:

- Press «**Page Up**» until you return to the Main Menu to select another menu option; or
- Press «**Menu (exit)**» twice to save settings, exit the menu system and return to display mode.
- If no keys are pressed for 5 minutes, the Measure mode will resume automatically and settings will be saved.

To exit menus and **discard** any changes made:

- Press «**Menu (exit)**» once and then press «1» to exit the menu system, revert to the prior menu settings, and return to the display mode.

PARAMETER SET MENU

Parameter Set

Three different Parameter Sets may be defined in the system memory. Each Parameter Set definition will be identified by a letter (A through C) which will become a line on the display in the normal measuring mode and other menus as P-Set.

Units

The O2 4300 D accommodates the following measurement units:

- ppb – Parts per billion
- ppm – Parts per million
- %O₂ – Percent Saturation
- g/l – grams per liter
- mg/l- milligrams per liter
- ug/l- micrograms per liter
- %Air- Percent Air saturation
- %O₂(Gas)-Percent O₂ saturation in gas
- ppm(gas)-parts per million in gas
- mbar pressure

Name

Each Parameter Set can be given a custom name for easier identification (up to eight alphanumeric or symbol characters). If a name is not entered, the Parameter Set will default to "none". The name may be overwritten as desired.

Note: See **Chapter 3: Getting Started** for instructions on using the alphanumeric keys

To exit the Parameter Set menu see Chapter 4: Using menus.

Press **«Menu (exit)»** to go to the Measure Mode before accessing the Calibration Menu.

Filter

Filtering stabilizes measurements readings in applications with noisy signals. The following options are available: "**none**", Low Pass **Low**", Low Pass **Medium**", or Low Pass **High**" Filter.

FACTORY DATA AND CALIBRATION MENU

METTLER TOLEDO InPro6880i sensors are factory calibrated. On initial start-up of the measuring system the corresponding sensor calibration data are **automatically transferred** from the sensor to the transmitter.

For detailed calibration instructions, see **Chapter 5**. Correct start-up and calibration as well as the understanding of the calibration routine are absolutely necessary for accurate measurements.

MILLIAMP (mA) OUTPUTS MENU

The 0/4-20 mA Outputs Menu is used to assign current outputs to measurements and define any necessary options. Furthermore HOLD Mode and Signal Filters for all four outputs are defined.

NOTE: Outputs are programmed to fulfill requirements of NAMUR NE43. This means that in an over-range condition, the outputs will be set to 20.5 mA. In an under-range condition the outputs will be set to 0 mA or -3.8 mA (if low value is set to 4 mA).

Use the **«UP»** and **«DOWN»** arrow keys in the mA Output menu to select mA-Output # (= number), then press **«Enter»** to continue with setting up one of the current outputs.

Four current outputs are provided. Each output can be programmed to operate as a normal (i.e., linear), bi-linear, auto-range, or logarithmic output and to send a 22 mA signal if a system failure is detected.

See **Chapter 2: Installing the O2 4300 D** for connection information.

mA Output #

Select Signal

Use the «Up» and «Down» arrow keys to select the desired signal. Select O2 assign the Oxygen value to one of the mA outputs. Select Temp to assign the Temperature to one of the mA outputs. Press «Page Down» to continue.

mA output #

Use the «Up» and «Down» arrow keys to select the desired output (1 through 4), then press «Enter» to continue with set-up for that output. Complete all set-up parameters for one output before starting another.

To set up the next output, press «Page Up» until you return to the initial current output screen and then select another current output number.

Scaling Type

The following types of output scaling are available: normal, bi-linear, auto-range, and logarithmic.

Normal scaling provides a linear 4 mA (or 0 mA) to 20 mA output. Low and high measurement values can be entered to correspond to those outputs.

Bi-linear scaling provides two scaling ranges for a single linear strip chart: usually a wide measurement range at the high end of the scale, and a narrower range with high resolution at the low end.

In addition to entering low and high values, a mid-range scaling value must be defined. For example, a user may want to monitor a particle breakthrough into the liquid phase during a liquid/solids separation process. Measurement is normally in the region of 100% air but during sensor verification a range below 10% is desirable.

Auto-Range scaling provides two ranges of output. It is designed to work with a PLC or two points of a multipoint strip chart recorder to meet the same needs as bi-linear scaling above.

Two separate settings are used, one for the high limit of the high range and one for the high limit of the low range, for the single 0/4-20 mA signal. The low value is always zero.

Logarithmic scaling provides an output for use with logarithmic chart paper. A high value and the number of decades must be entered. The low value is defined by the other two settings. For example, a high value of 1000 ppm with 3 decades would give a range of 1–10–100–1000 ppm.

Low Value (signal level)

Select 4 mA or 0 mA as the low value of the output signal.

0/4 mA (scaling limit)

Enter the measurement value that will correspond to 4 mA (or 0 mA).

Whenever the measurement is equal to this number, the output signal will be set to its minimum value. Whenever the measurement is less to this number it will be set to 0 mA or 3.8 mA when 4 mA has been selected (NAMUR NE43).

If the output scaling type is auto-range, the low value is always zero.

Note: Output signals can be "inverted" by setting the minimum value higher than the maximum.

Mid (Bi-linear scaling only)

Enter the measurement value that will correspond to the middle of the range (10 or 12 mA).

20 mA (scaling limit)

Enter the measurement value that will correspond to 20 mA.

Whenever the measurement is equal to this number, the output signal will be set to its maximum value. Whenever the measurement is greater than this number it will be set to 20.5 mA (NAMUR NE43).

Num of Decades (logarithmic scaling only)

Select the number of decades for the scale, from 1 to 6 (e.g., 1 to 100 is two decades).

On failure 22 mA

If the system or measurement fails, the system can failsafe to either 22 mA or not. In the case that the failsafe is set to off, the output will go to 20.5 mA. This state is displayed as asterisks "*****" on the front panel display.

Current Out

Displays the actual current (mA) being outputted.

SET HOLD MODE

The Set HOLD Mode menu is used to configure the HOLD state of the transmitter. During configuration and wash intervals, the transmitter can remain in the HOLD state for reasons of safety. The output currents are frozen (at last value or at a preset fixed value, depending on the configuration), limit and alarm relays are set to their non-activated status. If a meter is on hold, this is indicated by a flashing “H” on the display.

HOLD state:

No HOLD: The transmitter is never set to a HOLD state. It is always in a live state.

CAUTION: this setting can lead to unintentional switching of alarm/ and limit relays as well as to unexpected mA output readings when configuring the transmitter.

Fix: The current outputs (1-4) are frozen to a defined value when the transmitter goes into the HOLD state.

Fix Value: Enter the mA output value for the HOLD state.

Last: The current outputs are frozen to the last value as soon as the transmitter goes into the HOLD state.

NOTE: The transmitter is also set into the HOLD state if the corresponding discrete input is activated (see chapter 2, Discrete Inputs). If “No HOLD” has been selected in the software menu, mA-outputs are only frozen at their last value when the digital input activates the HOLD.

RELAYS MENU

The Relays Menu is used to define measurement limits, alarm conditions, a wash interval and length. All relays are SPDT (Single Pole Double Throw) types.

CAUTION: The default software settings for the relays, and the descriptions of the relay operations below, assume that the relays are wired in the following manner (see Chapter 2):

Limit 1 to TB6 pins 8 and 9 (normally open)

Limit 2 to TB6 pins 11 and 12 (normally open)

Alarm to TB5 pins 1 and 2 (normally closed)

Wash to TB5 pins 5 and 6 (normally open)

When the measurement value is higher than a high limit value or lower than a low limit value, an alarm condition exists. Limit alarm conditions are indicated by a flashing measurement reading when in the display mode. Also, the corresponding relay is closed when a limit value is exceeded.

The Alarm relay is opened in case of a system or power failure.

NOTE: Setpoints are defined for a specific Parameter Set. The active Parameter Set is displayed in the Relay menus .

Select Relay

Use the «Up» and «Down» arrow key to select a Relay (Limit 1 or 2, Alarm or Wash), then press «Page Down» to continue with the set-up for that relay. Complete all set-up parameters for one relay before starting another.

To set-up the next relay, press «Page Up» until you return to the initial relay screen and then select another relay.

LIMIT 1 AND 2

Signal

Select O2 to define a limit value for the Oxygen concentration. Select Temp to assign a limit value for the temperature. Press «Enter» to continue.

Value

Enter the desired setpoint value in the measuring units displayed.

Delay

A time delay requires the limit value to be exceeded continuously for a specified length of time before activating the relay. Enter the delay time in seconds.

If the condition disappears before the delay period is over, the relay will not be activated.

Hysteresis

A hysteresis value requires the measurement to return within the limit value by a specified percentage before the relay is deactivated.

For a high setpoint, the measurement must decrease more than the indicated percentage below the limit value before the relay is deactivated. With a low setpoint, the measurement must rise at least this percentage above the limit value before the relay is deactivated. For example, a high setpoint is set at 100 and the measurement is currently above this value so that the setpoint is exceeded and the relay is activated. If the hysteresis value is 10%, then the measurement must fall below 90 before the relay is deactivated.

Enter a percentage value. No greater than 50%.

Set Point

Select high or low. Select Off to disable the Set Point and to avoid relay triggering.

State

The **State** setting allows the operator to decide whether the relay will be physically activated or not during normal operation. If the N.O. state is selected then the relay contacts will be open when the limit is not exceeded or when the power is off (relay deactivated). The relay contacts will close when the limit is exceeded (relay activated). This is the default setting. If the N.C. state is selected then the relay contacts will be open when the limit is exceeded and when power is off (relay deactivated). The relay contacts will be closed when the measurement is within the limits (relay activated). This

assumes that the contacts are wired as described at the start of the relay section.

ALARM

The alarm relay is activated in case of system or power failure.

Delay

A time delay requires the alarm state to exist continuously for a specified length of time before activating the relay. Enter the delay time in seconds.

If the alarm condition disappears before the delay period is over, the relay will not be activated.

State

The State for the Alarm relay can not be changed. The relay will always be activated and the contact is open when there is no alarm. The relay contact will close when there is an alarm or when the power fails or is shut off.

Use alarm if mA outputs are under-/over-range

If **one** of the defined measuring ranges (see Chapter 4, mA Output #) is exceeded, the Alarm relay can be activated. Select yes or no.

WASH

Interval

Enter the time between two wash cycles in hours. The smallest possible value is 0.010 hr (36 seconds). The greatest possible value is 999.9 hours. The Wash relay will be activated when the interval time has been counted down. Enter 0.000 hr for deactivating the wash function. Press «Enter».

Depending on HOLD state settings, the instrument will go into the HOLD state when a wash cycle has been started (see chapter 3, HOLD state).

Wash time

Enter the time which is needed for a washing cycle in seconds. The greatest possible value is 600 seconds. Press «Enter». The wash relay will be activated for the length defined here plus a fixed post delay time of 20 seconds. After this time the instrument will leave the HOLD state - if activated.

State

The **State** setting allows the operator to decide whether the relay will be physically activated or not during normal operation. If the N.O. state is selected then the relay contacts will be open when the wash is off or when the power is off (relay deactivated). The relay contacts will close when wash starts (relay activated). This is the default setting. If the N.C. state is selected then the relay contacts will be open when the wash is on or when power is off (relay deactivated). The relay contacts will be closed when the wash is off (relay activated). This assumes that the contacts are wired as described at the start of the relay section.

SAVE/RECALL MENU

In the previous sections all settings for a certain application have been defined in one Parameter Set (P-Set A through C) and have been automatically saved.

In this menu you can copy the current settings to another Parameter Set or you can recall another Parameter Set, i.e. when the application changes.

Another Parameter Set can be recalled in the following menus or by using the corresponding discrete input (see Chapter 2, other connections).

Select

Select Save if you want to copy the current settings of a Parameter Set to another one. This is helpful if you want to duplicate your current settings as an initial state for another Parameter Set. Select Recall if you want to activate a certain Parameter Set. Press **«Page Down»**.

P-Set

Select the Parameter Set you want to save or recall. Press **«Enter»**.

RESET MENU

The Reset Menu is used to clear user programming and return settings to their default values; for the entire system, for single Parameter Sets, or Calibration settings of the active Parameter Set.

Note: The sensor factory data can not be cleared via the Reset Menu. If you connect the transmitter to another sensor, the factory data are automatically transferred to the transmitter.

Use the **«Up»** and **«Down»** arrow keys to select the desired option to reset, then press **«Enter»**. The available options are: **“System”**, **“P-Set”**, and **“Cal”**.

System

A system reset will:

- Clear and disable all relays, setpoints, and mA outputs in all P-Sets
- Clear Process Calibration Settings in all P-Sets.
- Set the serial port to 38.4K baud and even parity. The data output is turned off.

Note: A system reset will neither clear the sensor factory data nor change the unit number.

Press **Page Down** to reset the system.

P-Set

A P-Set reset will:

- Clear and disable all relays, setpoints, and mA outputs in the active P-Set
- Clear Process Calibration Settings in the active P-Set.
- Set the serial port to 38.4K baud and even parity. The data output is turned off.

Note: A system reset will not clear the sensor factory data.

Press **Page Down** to reset the active P-Set.

Cal

A Cal reset will clear Process calibration settings of the active P-Set.

Note: A system reset will not clear the sensor factory data.

Press **«Page Down»** to reset calibration settings of the active P-Set.

DIAGNOSTICS MENU

During measurements there are diagnostic testing routines running in the background of the transmitter and sensor software in order to alarm the user in case of any system failure.

In addition, there is a Diagnostic Menu used to run a series of diagnostic testing routines to verify the operation of the system components, including: transmitter, sensor, mA outputs, serial port, display, keypad, inputs and relays.

Use the «Up» and «Down» arrow keys to select a component to test, then press «Enter». The indicated test will be performed and the results displayed. Press «Enter» to perform the next test.

To test another component, press «Page Up» to return to the Diagnostic Menu and select the next component.

After completing the desired diagnostics, press «Menu (exit)» twice to exit the menu system and return to display mode.

CAUTION: Some diagnostic tests may interrupt normal operation of current outputs and relays and could upset related processes.

See the appropriate section below for information regarding the specific diagnostic tests.

Transmitter

Keypad

Press any key to test its response, the correct name of the key should be displayed. Press «Menu (exit)» twice to exit this test.

Meter Test

Use to test the timers, ROM checksum, and RAM. Tests are performed sequentially, press «Enter» to perform next test.

mA Output

Connect an ammeter to the mA output. Select an output to test, then enter a current value (milliamps) to send out the current output, then press «Page Down» to set. Repeat the test with a second current value to verify range response.

Relays

Use this option to test triggering of all four relays simultaneously. (Limit 1, Limit 2, Alarm, Wash).

Inputs

The level of the discrete input lines (high or low) will be displayed and updated (for P-Sets A through C and HOLD input).

Serial Port

Use a jumper wire to connect TB2 terminals 9 and 10 then press «Enter» to begin the serial port test.

Display

An automated sequence will test the display of all characters (alpha, numeric and symbol). Press «Enter» to stop the test.

Sensor

The diagnostic routines running in the background of the sensor software can be displayed. They include the following checks:

- ISM (Intelligent Sensor Management)
- Temperature
- Optoelectronic
- Stray light
- Boards

The following sensor data can be accessed with the **ISM (Intelligentes Sensor-Management)** menu:

- System Info
- Predictive
- Cal Info

These data are stored on the sensor and can not be changed by the user.

The predictive data contain

- SIP counter
- CIP counter
- Autoclave counter
- Membrane exchange counter
- System wear

Self Tests

An automated series of tests will check the operation of the following components:

- Sensor
- Lamp
- Current outputs
- Discrete Inputs
- Display circuit board
- Measurement circuit board
- Relay circuit board
- Other components (ROM, RAM, etc.)

The display shows how many times the tests have run, the elapsed time and the number of errors found. Press «Menu (exit)» to stop the test sequence.

OTHER MENUS

The Other Menu is used to access less commonly used features, including:

- Language
- Security
- Set Time/Date
- Set Unit Name
- Lost Passwords
- RS232 Set-up
- Print Configuration
- Software Revisions
- Service Only

Language MENU

Select the language in which the menu and online Help texts are displayed. You can choose between “**English**”, “**German**” and “**French**”. Press «**Enter**» to confirm.

Security MENU

The Security Menu is used to prevent unauthorized changing of parameters. Users can be locked out of all menu functions, locked out of calibration only, or locked out of all menus except calibration. Without the correct numeric password, the user will only be able to view the menus.

A master password is required to change any passwords, lockout options, or to enable/disable the security program. Two user passwords can be defined.

The initial master and user passwords are set to a default of 00000.

Go to ...

Use the «**Up**» and «**Down**» arrow keys to select the desired security option, then press «**Enter**». The available options are: Change Lockout, Change Password, Lockout Status and Lost Passwords.

To select another option after completing any of these options, press «**Page Up**» to return to this screen and select.

Change Lockout

Enter the master password to change any of the security lockout options.

Lockout

If lockout is enabled, users must enter their password to gain access to the menus. If disabled, no passwords will be required.

User 1

Select the desired lockout for User 1. The available lockout options are: “**Lockout All**”, “**Lock Cal Only**”, and “**Open Cal Only**”.

User 2

Select the desired lockout for User 2.

Change Password

Use to change any of the passwords.

Which password to change

Select the desired user or master password.

Master Pass

Enter the master password to proceed.

New password

Enter a new 5 character password and press «**Enter**». You will then be prompted to re-enter the password to confirm it.

Lockout Status

The status fields are for display only.

Lockout is

Displays whether security lockout is disabled or enabled.

User 1

Displays current lockout option for User 1.

User 2

Displays current lockout option for User 2.

Time since last access in menus

Displays the elapsed time since the menus were last accessed by any user.

Set Date/Time

Use to enter the correct date and time. Note that the internal clock does not run when power is off. It is only a convenience for setting the dates of calibration.

Time

Enter time in hours, minutes and seconds (hh:mm:ss).

Date

Enter date in month, day and year format (mm/dd/yy).

Set Unit Name

This feature is especially useful when more than one unit is used. Enter the name or location of this unit (up to 20 characters).

The unit name is displayed whenever exiting menus and appears in configuration printouts.

Lost Passwords

To recover lost passwords, record the codes displayed on the screen and then call the METTLER TOLEDO Customer Service for assistance

RS232 set-up

The RS232 Menu is used to format the data output communication parameters (baud, parity, etc.).

For detailed digital communications with regards to Main Program Software Upgrades see Chapter 7.

Data output: Selected to on, the current measurement with a time stamp can be recorded via the RS232 using a printer or a communication software package on a PC when this becomes available.

Print Configuration

A computer or printer can be used to record all set-up information (P-Sets A through C). If a device is connected to the RS232 output, press «**Enter**» to print. If the RS-232 output is connected to a computer, then a program like Hyper Terminal can read all of the set-up information.

Software Revs

Displays the engineering revision numbers of the currently installed system circuit boards (main, measurement, display, relay and sensor).

Service Only

These are service password protected functions for use by METTLER TOLEDO Service Personnel only.

CHAPTER 5: FACTORY DATA AND CALIBRATIONS

INTRODUCTION

A METTLER TOLEDO Oxygen system consists of a transmitter type O2 4300 D and a InPro sensor type 6880i. InPro6880i sensors are directly installed in a process pipe (see also sensor manual InPro6880i).

For maximum user flexibility, sensor and transmitter are not matched with each other. Each sensor is factory calibrated. The specific calibration data are stored on the sensor and printed on a calibration sheet supplied with the sensor. When starting up the system, these sensor specific calibration data are automatically transferred to the transmitter and are immediately in use. Application defined calibration routines allow a later calibration for fine tuning the system if necessary.

After connecting the sensor to the transmitter, the user is asked to enter the following information. The transmitter asks you to enter some information:

- Shaft serial number: XXX
Enter the serial number of the sensor shaft, labeled on the thread sleeve.
- Membrane Exch: Y/N
Enter Yes, if you have changed the opto-cap
- Shaft Autoclave: Y/N
Enter Yes, if the shaft has been autoclaved

These data are stored in the sensor head and are available on call for a proper sensor Documentation.

CALIBRATION

In each Parameter Set (Set A to C) four different types of calibration are possible: **Factory Calibration (Factory Data)**, **One-Point Calibration**, **Two-Point Calibration** and **Process Calibration**.

Factory Calibration (Factory Data)

This is the basic calibration for a specific sensor. It varies with every sensor. The Factory Calibration data are automatically loaded into all three Parameter Sets (A, B, and C) for immediate use.

Sensor specific calibration data result from a multiple point factory calibration to guarantee best accuracy for the whole measuring range.

When connecting the transmitter O2 4300 D to a sensor, the factory data are automatically transferred to the transmitter. There is no need to manually enter these data. For verification purposes, the factory calibration data can be accessed via the diagnostic menu.

If you later on perform a Process Calibration, the original factory calibration data can be re-activated by the "Choose" command in the Calibration menu.

Single-Point Calibration

For most application, a single point calibration should be sufficient, as long as not the whole measuring range of the transmitter is used.

To measure high oxygen concentrations with high accuracy e.g. air saturated medium, an air calibration is recommended.

Procedure:

By pressing the Menu(exit) button the user gets from the measuring mode to the menus.

In the menu calibration

New one point calibration

Input of the actual relative humidity

Input of the actual calibration pressure

Page-down to start the calibration

The transmitter displays the actual phase angle und the temperature.

The display page down when stable is blinking.

The page-down button is accepted earliest after 30 seconds, because the sensor needs at least 30 seconds a stable value. After 30 seconds a star will appear at the upper left corner of the display.

If the signal is stable after 30 seconds, the transmitter goes to the next step automatically.

Display of the calibration data

Phase angle at 100% air (Phi 100).

Phase angle at nitrogen (Phi 0).

These values can not be modified in this step.

After pressing the page-down button you get to the correction menu.

At this step you can put in the real pressure and after pressing the page-down button the salinity of the solution.

After pressing the Menu/Exit – button and confirmation these calibration data are stored and the transmitter goes into the measuring mode.

Dual-Point Calibration

To receive a maximum accuracy of the measured values over the full measuring range, a dual point calibration is required. As a rule, the zero point should be adjusted to zero manually, or it is automatically performed by the transmitter

Attention! Incorrect zero point calibration is a frequent source of measurement error. For correct calibration, we recommend the use of nitrogen gas or other oxygen-free medium with a level of purity of at least 99.995%.

A zero point calibration is only advisable if very high accuracy is required at low oxygen concentrations.

Procedure:

By pressing the Menu(exit) button the user gets from the measuring mode to the menus.

In the menu calibration

- New one dual point calibration
- Input of the actual relative humidity
- Input of the actual calibration pressure
- Page-down to start the calibration

1. Air

The transmitter displays the actual phase angle and the temperature.

The display page down when stable is blinking.

The page-down button is accepted earliest after 30 seconds, because the sensor needs at least 30 seconds a stable value. After 30 seconds a star will appear at the upper left corner of the display.

If the signal is stable after 30 seconds, the transmitter goes to the next step automatically.

2. Nitrogen

The transmitter displays the actual phase angle and the temperature.

The display page down when stable is blinking.

Transfer the sensor to the Oxygen free calibration gas (Nitrogen with a purity of at least 99.998 %).

The display page down when stable is blinking.

The page-down button is accepted earliest after 30 seconds, because the sensor needs at least 30 seconds a stable value. After 30 seconds a star will appear at the upper left corner of the display.

If the signal is stable after 30 seconds, the transmitter goes to the next step automatically.

Display of the calibration data

Phase angle at 100% air (Phi 100).

Phase angle at nitrogen (Phi 0).

These values can not be modified in this step.

After pressing the page-down button you get to the correction menu.

At this step you can put in the real pressure and after pressing the page-down button the salinity of the solution.

After pressing the Menu/Exit – button and confirmation these calibration data are stored and the transmitter goes into the measuring mode.

Process Calibration Adjustment

This type of calibration is an online calibration, where the user enters the Process Cal menu and saves the current Oxygen reading. The user then takes a “grab sample” of the process to measure it against a laboratory instrument to get a reference Oxygen measurement.

Procedure:

By pressing the Menu(exit) button the user gets from the measuring mode to the menus.

In the menu calibration

- Process calibration
- Input of the actual relative humidity
- Input of the actual calibration pressure
- Page-down to start the calibration

The transmitter displays the actual phase angle and the temperature.

The display page down when stable is blinking.

The page-down button is accepted earliest after 30 seconds, because the sensor needs at least 30 seconds a stable value. After 30 seconds a star will appear at the upper left corner of the display.

If the signal is stable after 30 seconds, the transmitter goes to the next step automatically.

If the signal is stable after 30 seconds, the transmitter goes to the next step automatically.

Before the Process Calibration can be completed, the laboratory reference Oxygen measurement must be entered into the transmitter. During the period when the grab sample is being analyzed the transmitter retains the measured Oxygen signal reading in memory. The transmitter returns to display the measurement and functions normally and the message “Pro Cal” is displayed. The user can go into any menu except the calibration menu. Upon returning to the online transmitter, the user re-enters the Process Calibration menu. The menu allows the user to adjust the oxygen reading with the new value that is to be entered. Also

shown is the stored value that the transmitter saved during the initial entry into Process Calibration. Note the current reading may be very different than the stored value due to the time that has elapsed while obtaining the laboratory measurement. Finishing the menu entries completes the Process Calibration

The following data can be displayed via the menu calibration

1. actual calibration data

2. factory calibration

CHAPTER 6: MAINTENANCE & TROUBLESHOOTING

MAINTENANCE

Front Panel Cleaning

Clean the front panel with a damp soft cloth (water only, no solvents). Gently wipe the surface and dry with a soft cloth.

For Technical Support and repair information contact your local METTLER TOLEDO dealer

ISM FUNCTIONALITY

The ISM technology allows the user to record important information of the sensor. The Menu Diagnostic/Sensor/ISM/Predictive gives data about the numbers of CIP or SIP-cycles, the number of autoclaving.

TROUBLESHOOTING CHECKLIST

If the equipment is used in a manner not specified by METTLER TOLEDO, the protection provided by the equipment may be impaired.

Review the table below for possible causes of common problems:

Problem	Possible Cause
Display is blank.	No power to O2 4300 D. Blown fuse. LCD display contrast set incorrectly. Hardware failure.
Display shows flashing "H"	Transmitter is currently in HOLD mode
Display shows flashing "Pro Cal"	A Process Cal has been started.
Display shows *****	Calibration settings not suitable for current media. Measurement value out of the calibration range. Sensor failure. Temperature value out of specified range.
Incorrect measurement readings.	Wrong sensor wiring. Process pipe not filled completely. System needs calibration. Hardware failure.
Measurement readings not stable.	Low Pass filter off. Gas bubbles in process media. Process pipe not filled completely. Sensor failure.
Displayed measurement reading is flashing.	Limit value is in alarm condition (Limit value exceeded). Temperature value out of specified range.
Cannot change menu settings.	User locked out for security reasons.
Data not sent out to serial port.	Serial port miss-wired. Baud rate and/or parity set incorrectly.

ERROR MESSAGES

Following is a list of error messages, their meaning, and possible causes.

Message	Meaning / Possible Cause / Proposed Solution
Temperature critical	The ambient and/or process temperature is close to the specified range. Connect air purge.
Temperature too high	The ambient and/or process temperature exceeds the specified range. No reliable measurement is possible anymore. Connect air purge to the sensor.
Humidity critical	The humidity inside the sensor is higher than the normal value.
Humidity too high	The humidity inside the sensor exceeded the safe range.
Light source not working	The LED has failed. Ship sensor back for repair.
Detector not working	The detector has failed. Ship sensor back for repair.
Boards not ok	Measurement boards are missing, failed, or not properly connected. Ship sensor back for repair.
Measurement range error	Auto-gain algorithm out of range or Oxygen value out of calibration table.

CHAPTER 7: UPGRADE

UPGRADES

There is software for various functions located in the O2 4300 D. The need for field upgrade is likely to occur only with the Main Program and Measurement software.

Main program Software Upgrade

Over the life of the instrument, it may become desirable to upgrade the main operating software of the O2 4300 D to a newer version. The main operating software revision number can be displayed by stepping through the menus: Other Menus/Software Revs/Main Program.

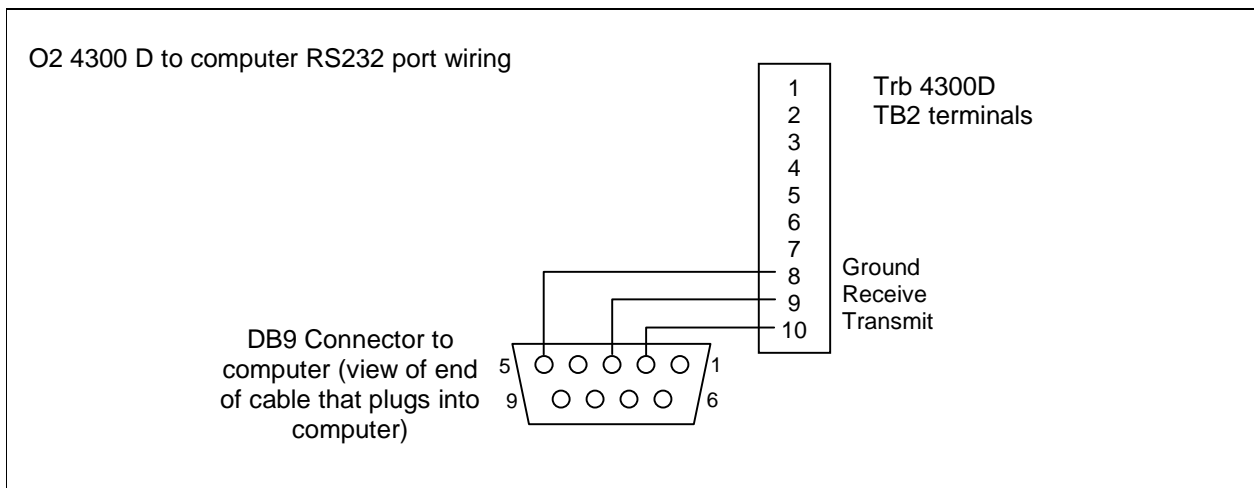
The main program software is changed by downloading the new operating file using METTLER

TOLEDO Thornton utility program "Programmer.exe". It runs on computers using Windows95 or later and occupies about 0.7 MB of hard disk space.

NOTE: Not all menus of the O2 4300 D Programmer are functional—use only those needed for the upgrade as described in the procedure below.

A cable is required with connector for the computer's RS485 port. Most computers use a DB9 connector as shown. Tinned leads at the other end connect to the O2 4300 D screw terminals.

Because the memory chip containing operating software also contains extensive instrument calibration data, it is not practical to upgrade software by replacing the memory chip.



Procedure

1. Record all the configuration settings and the serial number of the O2 4300 D unit being upgraded.
2. Confirm that the O2 4300 D is configured for communications. Press «Menu (exit)» and use «TP» in Other Menus to display "RS485 Set-up". Set Baud = 38.4K, Par = Even, Data Output = Off, if they are not already set this way.
3. Connect the O2 4300 D to the computer RS485 port as shown above.
4. From e-mail or floppy disk, copy the program Programmer.exe and the new O2 4300 D software file e.g. XXXXX into a convenient folder or desktop of the computer.
5. Run Programmer.exe by double clicking it in Windows Explorer and ignore any small incidental windows that may open.
6. Click to open 'Communication' menu and 'RS-485 Functions' and select 'Gateway Port Set-up'.
7. Select Port—COM 1 (or other port if you are using another).
8. Select Baud Rate—38400.
9. Select Data Bits—8.
10. Select Parity—Even.

11. Uncheck Enable Polling. Leave other settings as found (Flow Control—Xon/Xoff, Stop Bits—1).
12. Click OK and observe 'Connected' in the lower border of the window when communications are functioning.
13. Click on the integrated circuit button (Program Unit, 4th from right) on the tool bar.
14. Select Units to Program—One Unit and enter 1 in the box. Leave Unit Type at Main.
15. Click 'Read' and locate the new O2 4300 D software file and click OK. The new software version will be loaded into computer memory.
16. Click 'Program'. Loading to the O2 4300 D will take several minutes. Allow to run until 100% is displayed.
17. Restore the serial number of the unit using the appropriate command in section RS-485 Communications.
18. Disconnect the RS-485 wiring from the O2 4300 D.
19. If necessary, reconfigure the unit with the settings recorded in step 1.

CHAPTER 8: ACCESSORIES AND SPARE PARTS

ACCESSORIES

Description	Part Number
IP66 field-type enclosure for wall mounting incl. 5 pcs PG11 cable gland and front door with window Dimensions: H=200, W=250, L=230 mm H=7.87", W=9.84", L=9.10") Material: Stainless steel (1.4304)	52 800 867
2m InPro6880i Sensor cable (6.56 ft.)	52 300 379
5m InPro6880i Sensor cable (15 ft.)	52 300 380
10m InPro6880i Sensor cable (30 ft.)	52 300 381

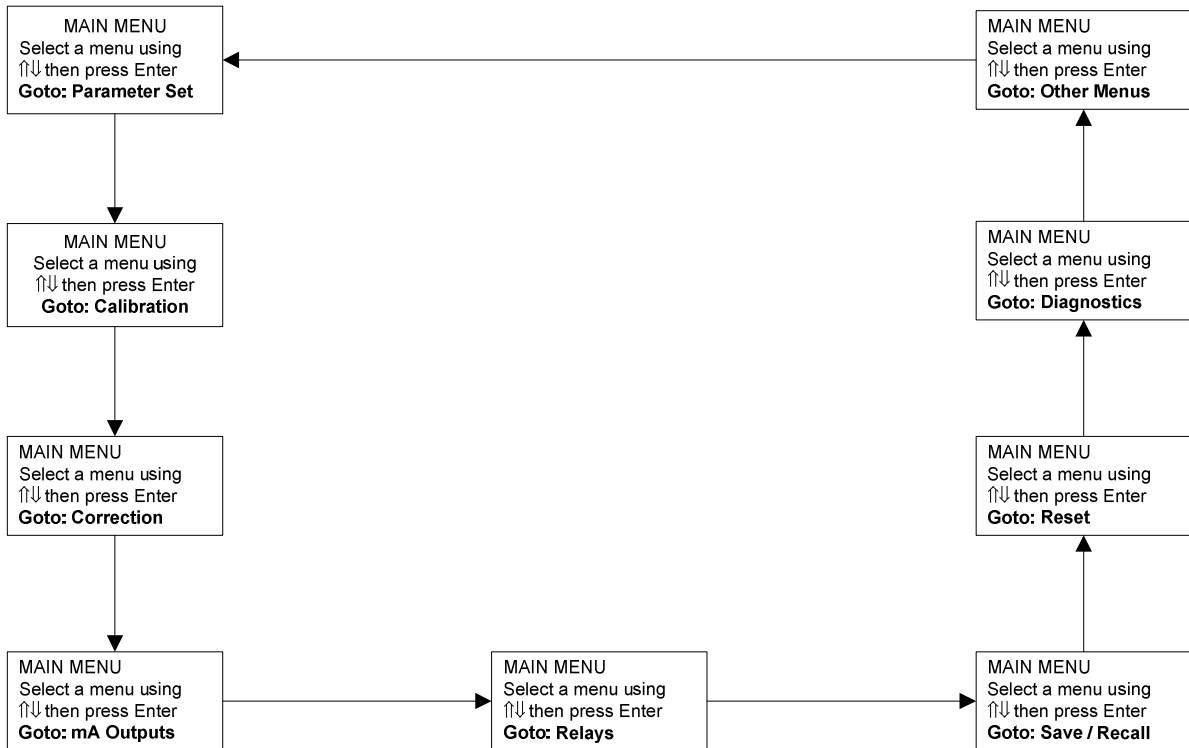
SPARE/REPLACEMENT PARTS

Description	Part Number
10-Terminal plug-in connector (TB2 and TB3)	52 800 251*
6-Terminal plug-in connector (TB5 and TB6)	52 800 252*
Fuse, 0.5 A slow blow, 5 x 20 mm (Littlefuse 215.500 or equivalent)	52 800 253*
Panel mounting screws (6-32 x 7/16", 4 required)	52 800 254
Screws for front panel (2 required)	52 800 255
Retaining washers for front panel (2 required)	52 800 256
Liquid crystal display module (order mounting standoffs separately)	52 800 257
Display standoffs (4 required for display above)	52 800 258

*Recommended Spare parts

APPENDIX A: MENU TREE

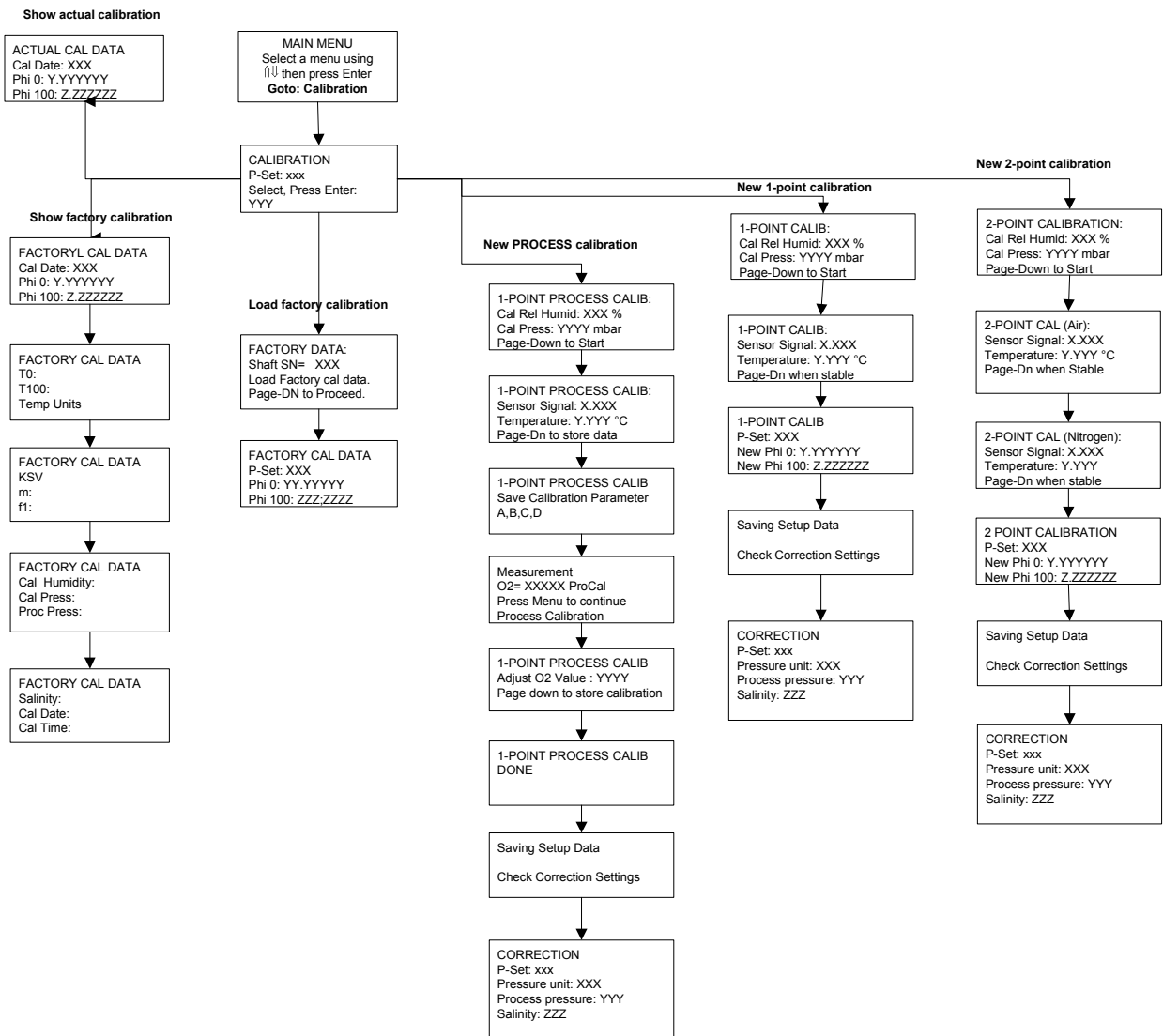
MAIN MENU



PARAMETER SET MENU



CALIBRATION MENUS

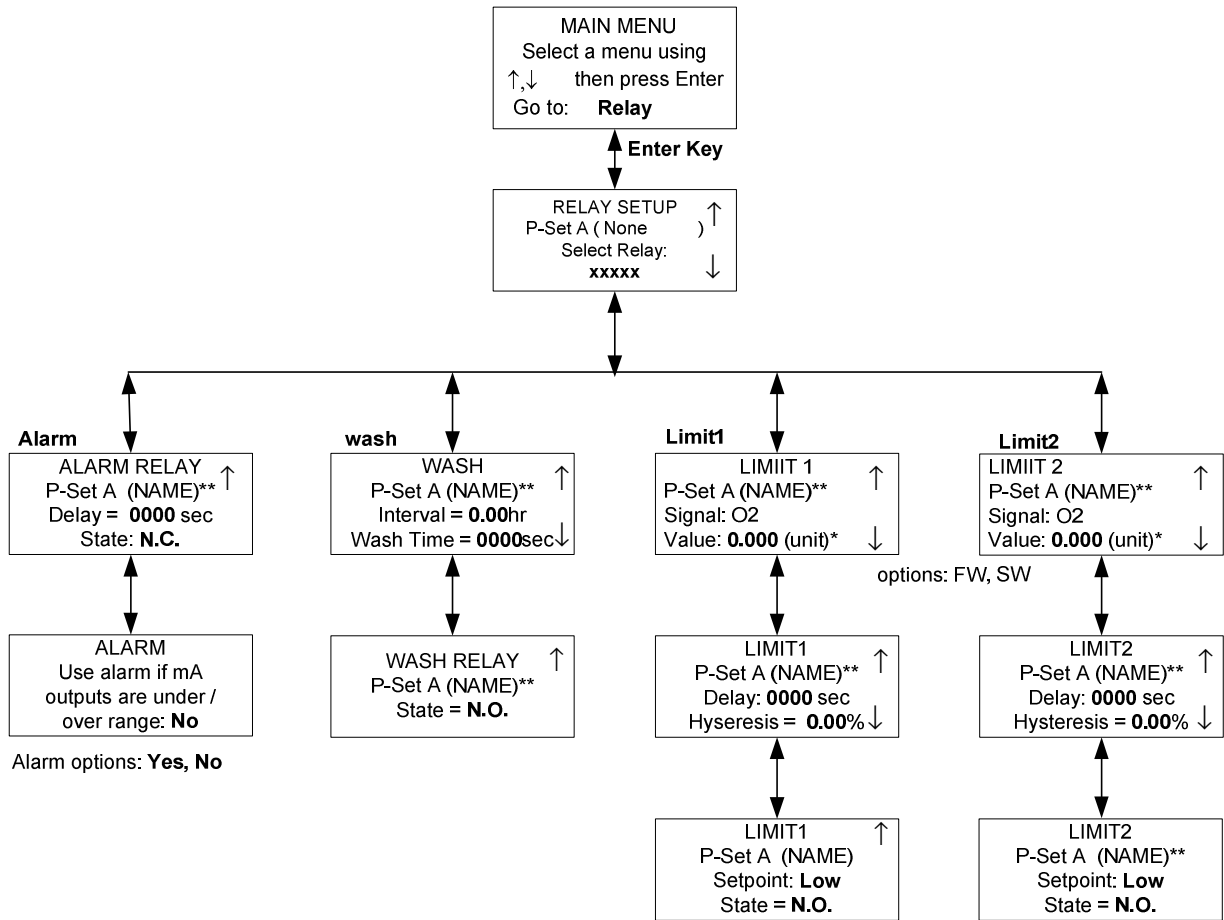


CORRECTION MENU

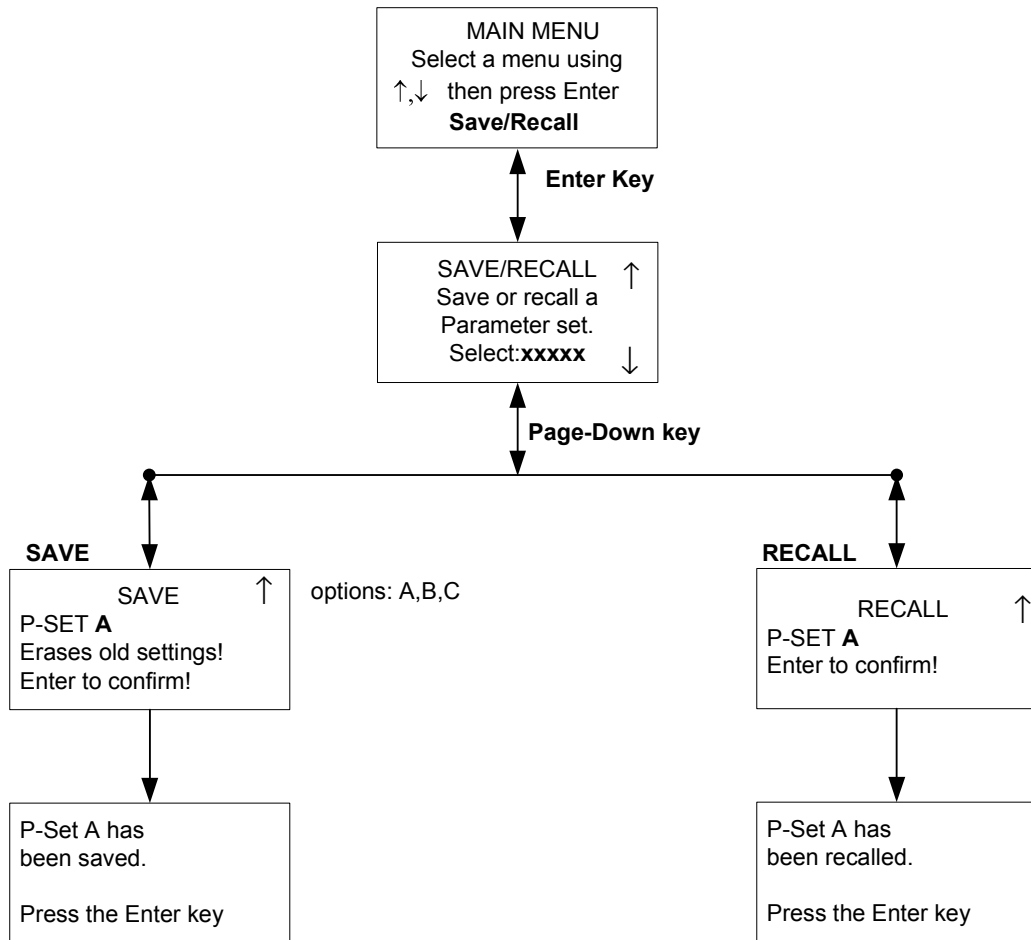
MAIN MENU
Select a menu using
↑↓ then press Enter
Goto: Correction

CORRECTION
P-Set: xxx
Pressure unit: XXX
Process pressure: YYY
Salinity: ZZZ

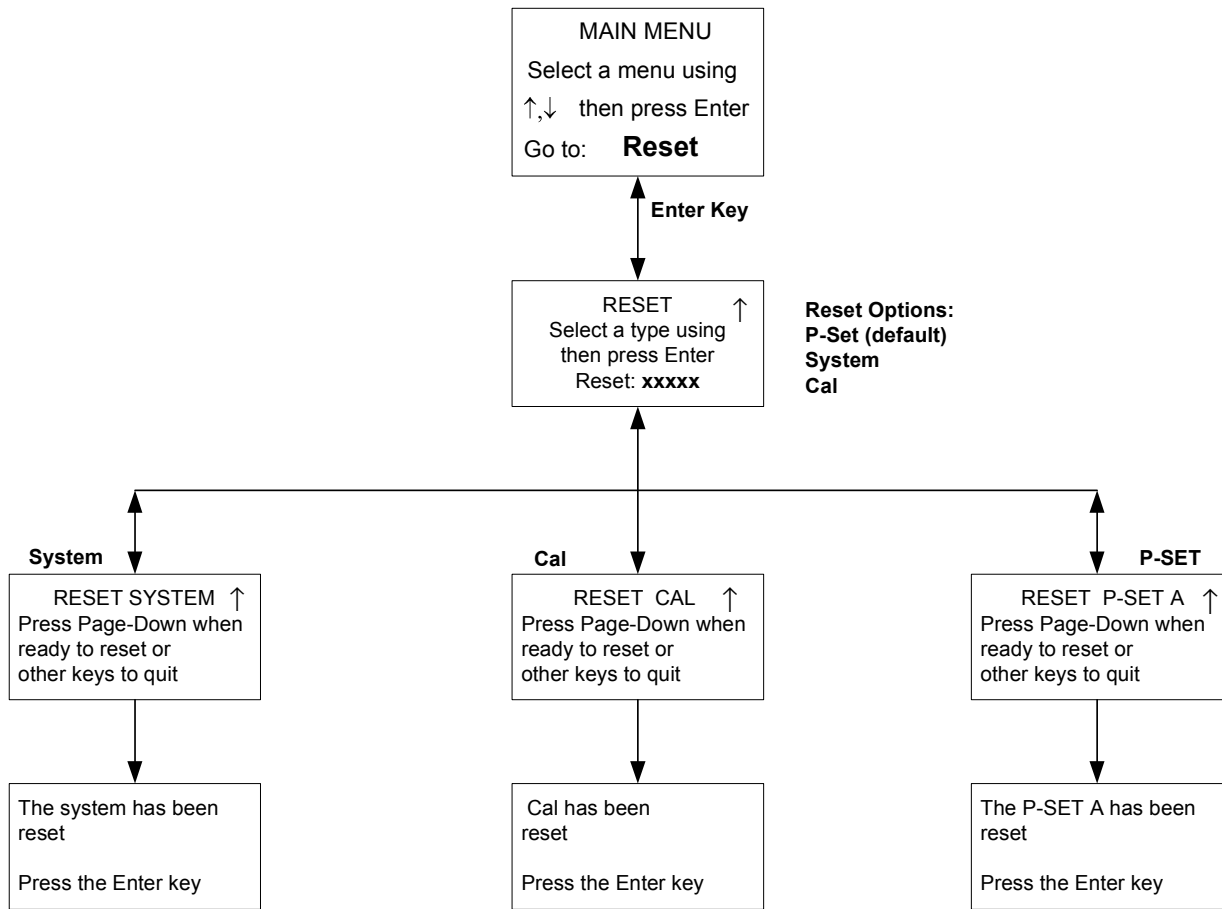
RELAYS MENUS



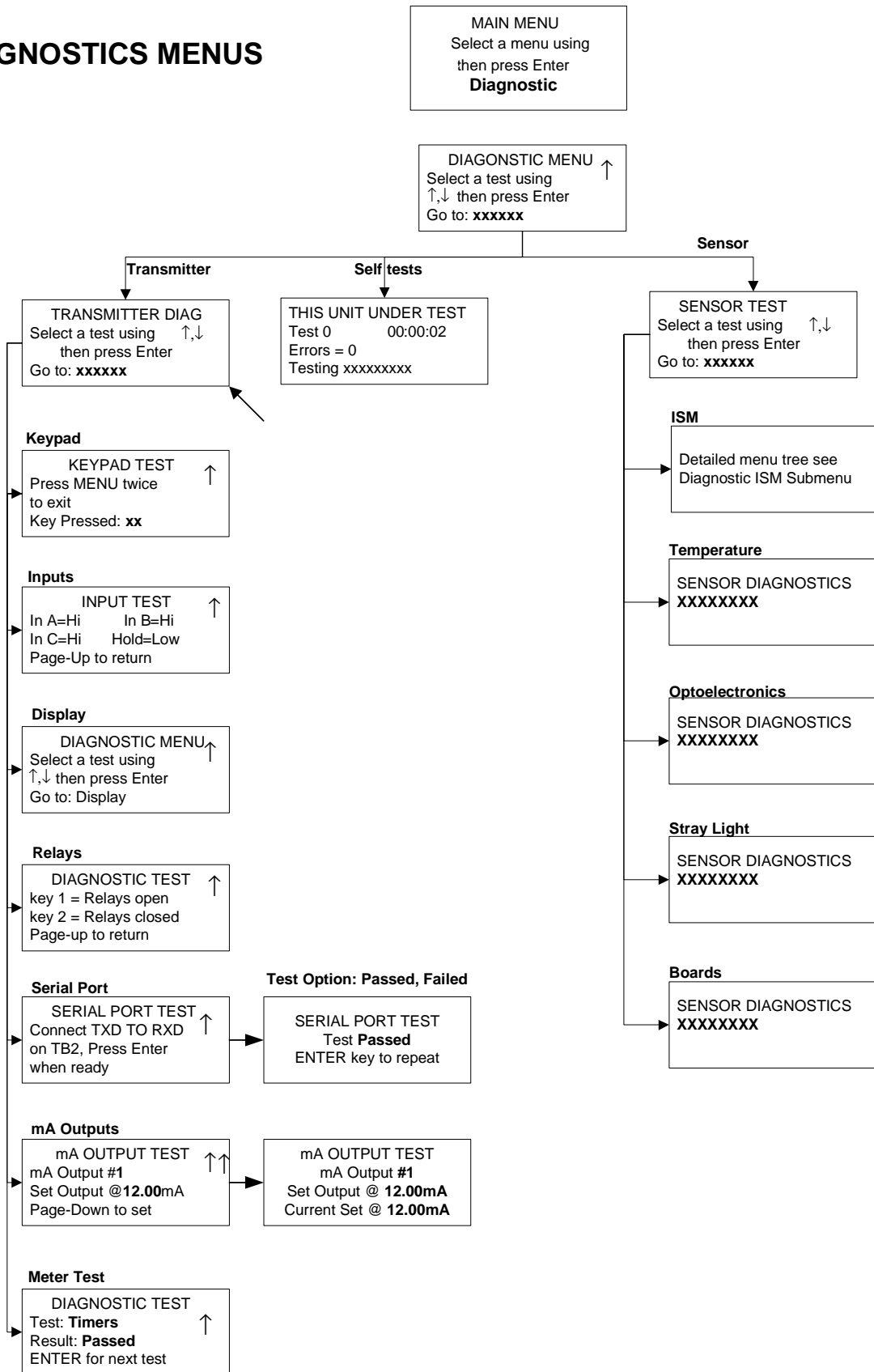
SAVE/RECALL MENUS



RESET MENUS

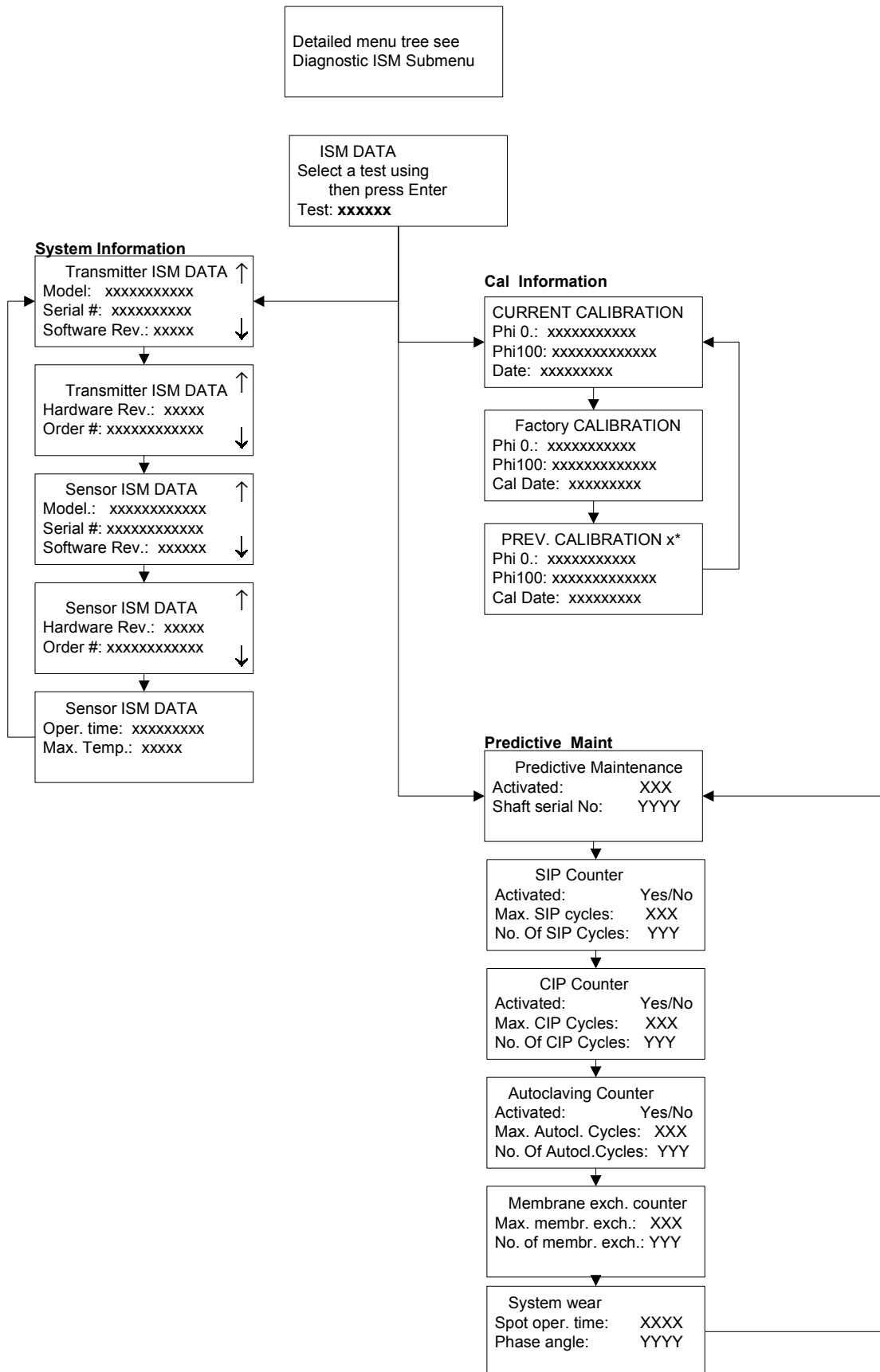


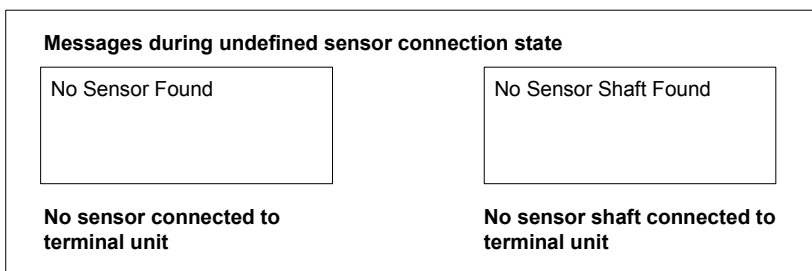
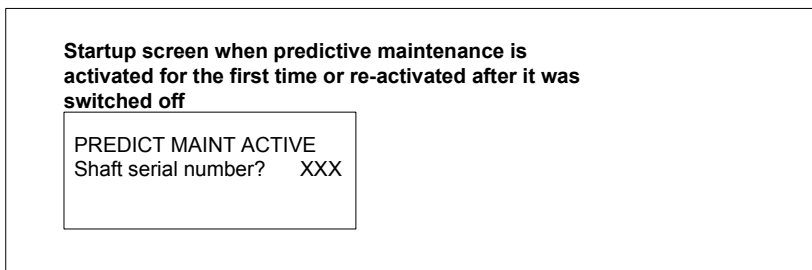
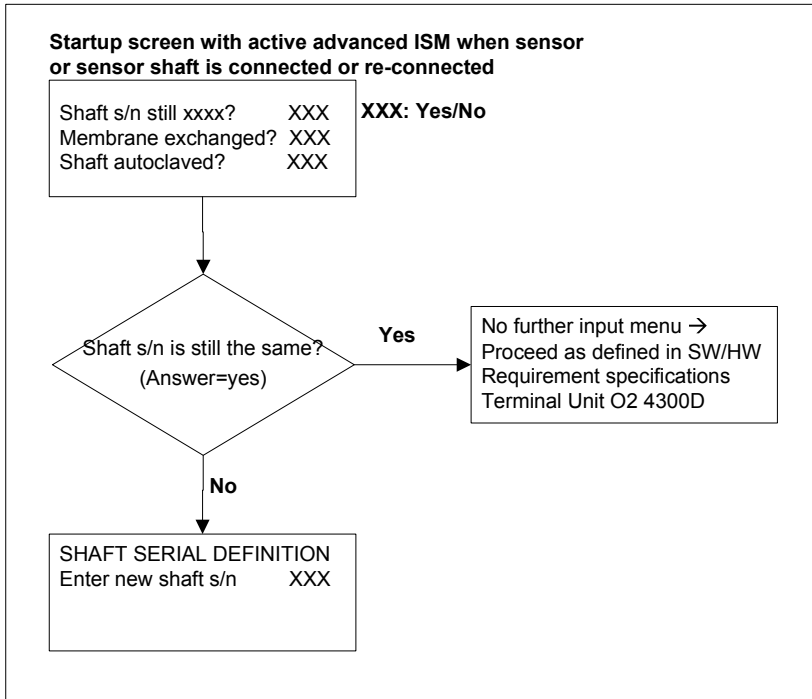
DIAGNOSTICS MENUS



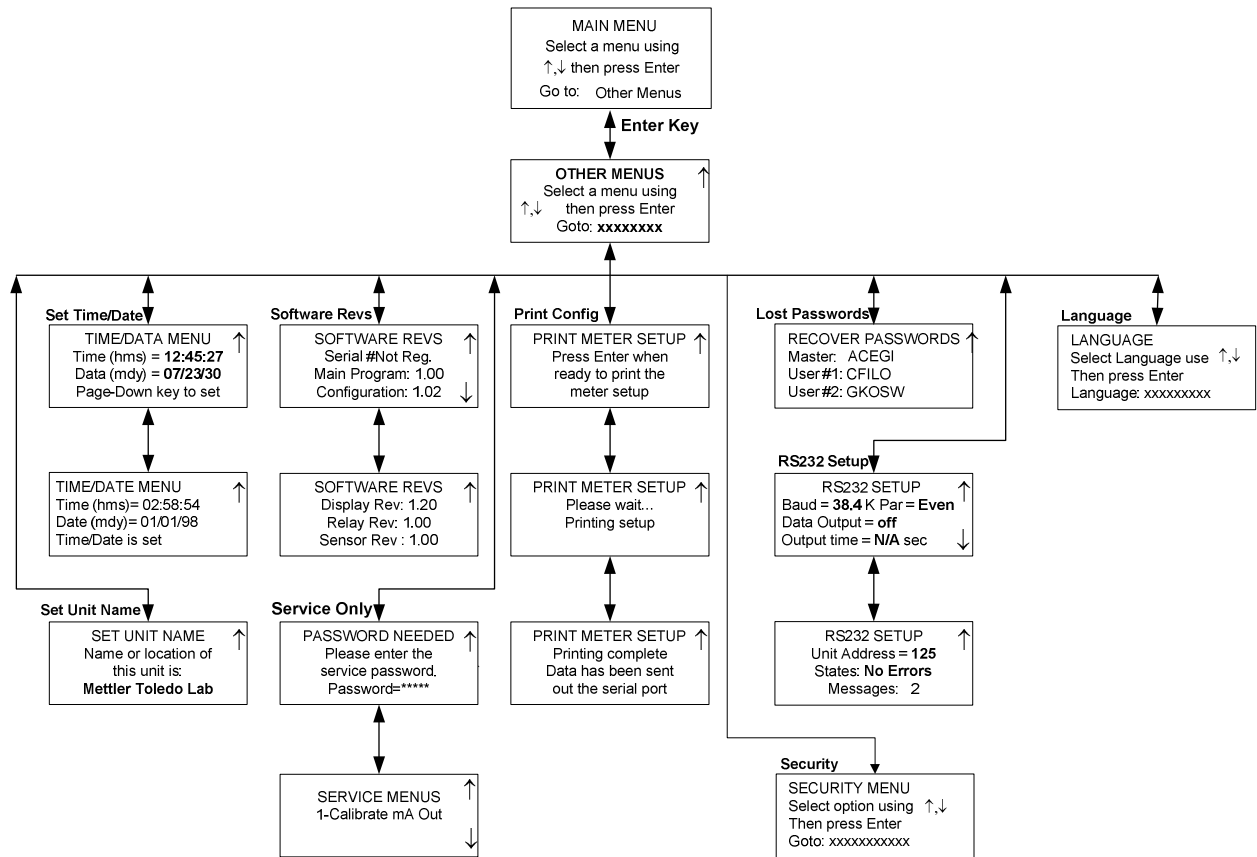
DIAGNOSTIC SUBMENU

ISM





OTHER MENUS



APPENDIX B: SET-UP PARAMETER RECORD

MEASUREMENT PARAMETERS RECORD 1/2

Photocopy this form for each Parameter Set programmed into the O2 4300 D.

Unit Name: _____ **Date:** _____

Sensor installed:

Model: _____ S/N: _____

Cable length: _____

Parameter Set: _____

Units: _____ Name: _____

Calibration routine: _____ **Calibration Solution:** _____

Date of last calibration: _____

Analog Output 1

Output Type: _____ Range: _____

On failure set output to 22 mA: _____

Analog Output 2

Output Type: _____ Range: _____

On failure set output to 22 mA: _____

Analog Output 3

Output Type: _____ Range: _____

On failure set output to 22 mA: _____

Analog Output 4

Output Type: _____ Range: _____

On failure set output to 22 mA: _____

Filter: _____ **HOLD mode:** _____

Limit Value 1:

Value: _____ Delay: _____

Hysteresis: _____ Setpoint : _____

State: _____

Limit Value 2

Value: _____ Delay: _____

Hysteresis: _____ Setpoint : _____

State: _____

MEASUREMENT PARAMETERS RECORD 2/2

Wash contact:

Interval: _____ Wash time: _____

State: _____

Alarm:

Delay: _____ State: _____

Use alarm if mA outputs are under/over range: _____

Passwords

Master: _____ User1: _____

User2: _____

Language: _____

RS-485 Settings

Baud: _____ Parity: _____

Data output: _____ Output time: _____

Unit adress: _____

APPENDIX C: SPECIFICATIONS

Power supply	100...240 VAC 25 Watts maximum, 47-63 Hz (part number 52 206 264) 20...32 VDC 25 Watts maximum (part number 52 206 248) On power loss, all stored values are retained in non-volatile memory without batteries. Clock does not run when power is off.
Sensors	1 input / output
Measurement range	selectable between
Resolution	
Parameter Sets	Three configurable Parameter Sets (A - C), storable and retrievable via software menu or remote access via digital inputs
Digital Input	4 buffered digital inputs (0-5 V) – 1 digital input for HOLD function – 3 digital inputs for activating stored Parameter Sets A-C
System Calibration (Operational modes)	
Factory-defined calibration	Factory data is stored in sensor and automatically recalled when sensor is connected to transmitter.
Process Calibration	Single-point calibration simultaneously with sampling (adjustment of offset or slope, user defined)
One Point Calibration	
Two Point Calibration	
Reset calibration parameter	Software reset restores calibration data to factory-set sensor data
Password protection	Password-protected menu access for different operator levels (Master, User 1 and 2), able to be activated
Sensor diagnostics	Sensor: indication on display of the photoelectric currents
Output 1-4	Four standard powered 0/4-20 mA outputs, 500 ohm load maximum, isolated from the measurement circuitry ; accuracy ± 0.05 mA, typical. Outputs are assignable to any Parameter Set with free scaling in linear, bi-linear, logarithmic or auto range format.
Alarm contact	Relay contact, mechanical SPDT, floating
Contact capacity	AC < 250 V / < 5 A DC < 30 V / < 5 A
Contact function	N/C (fail-safe type)

Alarm delay	000...600 s
Wash contact	Relay contact, mechanical SPDT, floating
Contact capacity	AC< 250 V/< 5 A DC< 30 V/< 5A
Contact function	N/O or N/C
Cleaning interval	0.0 ... 999.9 h (0.0 h = cleaning function switched off)
Duration of cleaning	000...600 s
Limit values (2)	2 relay contacts, mechanical SPDT, floating
Contact capacity	AC< 250 V/< 5 A DC< 30 V/< 5A
Contact function	N/O or N/C
Delay	000...600 s
Switching points	hi-hi / hi-lo / lo-lo
Hysteresis	0.0...50.0%
Digital interface	For updating of main program software and for printing of instrument configurations
RS232 standard	max. cable length 15 m (45 ft)
Baud rate	1200, 2400, 4800, 9600, 19.2k and 38.4k
Parity	odd, even or none
Display	Liquid crystal display (LCD), 20 alphanumerical characters x 4 line, backlit
Keypad	20 keys, membrane type keypad
Language	software selectable: English, German, or French for menu and Help texts
Diagnostic functions	Sensor mA outputs Display Keypad Meter Serial Port Relays Self-test ISM
Data retention	Configuration and calibration data in non-battery supported, non-volatile memory
CE	
Emissions	EN 55022:1994 Class A ITE emissions.
Immunity	EN 61326:1997 Measurement, Control and Laboratory Equipment EMC Requirements – Industrial Use
Safety	EN61010-1:2001 Safety requirements for electrical equipment for measurement, control and laboratory use
US UL	UL61010B-1 Electrical Measuring and Test Equipment

CAN / CSA C22.2, No. 1010.1

Nominal operating conditions

Ambient temperature -10...+55 °C (14 ... 131 °F)
Transport/Storage temp -20...+80 °C (-4 ... 176 °F)
Relative humidity 0...80 % up to 31 °C (88 °F), linear decline to 50 % at 40°C (122 °F)

Enclosure

Alloy ABS-PC, UV and chemically resistant
Assembly Panel mounting, cutout 96 x 96 mm (3.78" x 3.78") 1/4 DIN
Dimensions H 125 mm, W 114 mm, L 162 mm (H 4.92", W 4.50, L 6.39")
Protection sealed face, IP65 (Nema 4X)
Weight Approx. 0.9 kg (2 lbs.)

APPENDIX D: RATINGS



Declaration of Conformity

We,

Declare under our sole responsibility that the product:

O2 4300 D Transmitter

to which this declaration relates, is in conformity with the following European, harmonized and published standards at the date of this declaration:

Emissions:

EN 55022:1994 Class A ITE emissions.

Immunity:

EN 61326:1997 Measurement, Control and Laboratory Equipment EMC Requirements – Industrial Use

Safety:

EN61010-1:2001 “Safety requirements for electrical equipment for measurement, control and laboratory use” incorporating Amendments Nos. 1 & 2.

Testing for compliance was carried out to the following specifications:

Following the provisions of the directives 89/336/EEC Electromagnetic Compatibility

Amendment to the above directive: 93/68/EEC

Low Voltage. Directive 73/23/EEC

Amendment to the above directive: 93/68/EEC

UL Recognition

Mettler-Toledo Thornton, 36 Middlesex Turnpike, Bedford, MA 01730, USA has obtained Underwriters Laboratories' Recognition for O2 4300 D Transmitters. They bear the cULUS recognition mark, signifying that the products have been evaluated to the applicable ANSI/UL and CSA Standards for use in the U.S. and Canada.

US UL UL61010B-1 Electrical Measuring and Test Equipment
CAN/CSA C22.2, No. 1010.1

APPENDIX E: WARRANTY

METTLER TOLEDO guarantees the quality of materials and workmanship within a narrow range of manufacturing tolerances, so that the product purchased is free from any substantial deviations from material and manufacturing quality standards. The warranty is valid for the period of one year from date of delivery ex works. If within this warranty period, any repair or replacement should become necessary, and such cause is not due to misuse or incorrect application, please return the product, carriage paid, to your appropriate METTLER TOLEDO agency. Repair work will be carried out free of charge. Final decision on whether the defect is due to a manufacturing error or to incorrect operation of the product by the customer is made at the option of the Customer Service department of METTLER TOLEDO. After expiry of the period of warranty, faulty products will be repaired or replaced on an exchange basis against payment of the costs involved.

- BR** **Mettler-Toledo Ind. e Com. Ltda.**, Alameda Araguaia, 451 - Alphaville, BR – 06455-000 Barueri / SP, Brazil
Tel. +55 11 4166 74 44, Fax +55 11 4166 74 01
- CH** **Mettler-Toledo (Schweiz) GmbH**, Im Langacher, CH – 8606 Greifensee, Switzerland
Tel. 044 944 45 45, Fax 01 944 45 10
- D** **Mettler-Toledo GmbH**, Prozeßanalytik, Ockerweg 3, D – 35396 Gießen, Germany
Tel. (0641) 507-333, Fax (0641) 507-397
- F** **Mettler-Toledo Analyse Industrielle**, 30 Bld. de Douaumont, BP 949, F – 75829 Paris, France
Tel. (1) 47 37 0600, Fax (1) 47 37 4626
- USA** **Mettler-Toledo Ingold, Inc.**, 36 Middlesex Turnpike, Bedford, MA 01730 USA
Tel. (781) 301-8800, Fax (781) 271-0681

Dateiname: Oxygen_Transmitter_O24300D_e_52206282_November07.doc
Verzeichnis: W:\Produkt_Projekte\New_02_Biotech_60121\Marketing\Instruction Manuals
Vorlage: C:\Documents and Settings\illerhaus-1\Application Data\Microsoft\Templates\Normal.dot
Titel: Part No
Thema:
Autor: clementr
Stichwörter:
Kommentar:
Erstelldatum: 19.11.2007 15:19:00
Änderung Nummer: 5
Letztes Speicherdatum: 21.11.2007 13:08:00
Zuletzt gespeichert von: illerhaus-1
Letztes Druckdatum: 30.11.2007 11:17:00
Nach letztem vollständigen Druck
Anzahl Seiten: 50
Anzahl Wörter: 13'393 (ca.)
Anzahl Zeichen: 67'368 (ca.)