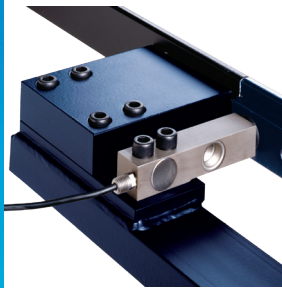


## 0990 Monorail Overhead Rail Scale



### Easy to Install

The 0990 Monorail is designed for ease of installation, integrating seamlessly into new or existing rail lines and offers standard 2 or 4 foot live rail lengths.



### Rugged Construction

Designed for constant use, the scale's construction ensures consistent accuracy even in challenging conditions. The integrated approach and departure rails help provide maximum accuracy.



### Stainless Steel Hermetically-Sealed Load Cells

The integrated hermetically-sealed load cells guarantee a long lifetime, low maintenance and easy cleaning, while also improving sanitary operation in packing plants.



### Monorail Track Scale

Ideal for Weighing Beef, Pork and Lamb

Streamline your meat processing operation with a Model 0990 monorail overhead track scale. This reliable scale is ideal for processing facilities that use overhead rail systems for material handling.

- Integrated into rail system
- Hermetically Sealed Load Cells
- Industry Standard Rail
- Stainless Steel or Painted Steel Construction

# Rugged Construction, Efficient Operation

## Two Standard Sizes

### Features and Benefits

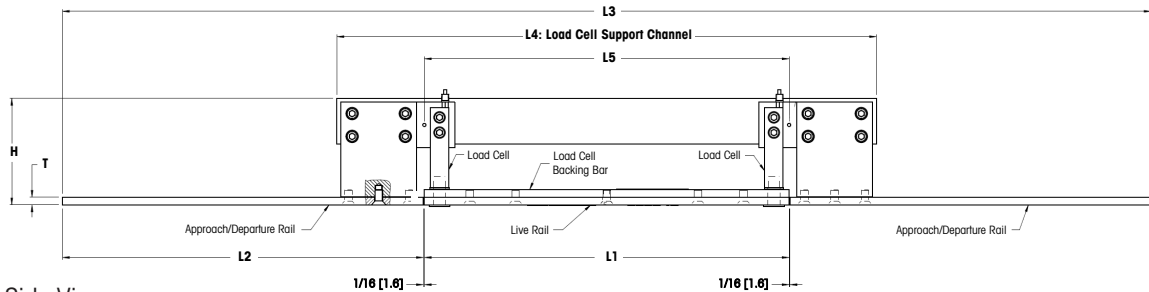
Features	Benefits
Integrated with Rail System	Reduces weighing time and costs.
Compact Design	Requires less headroom.
Self-contained Assembly	Low maintenance – no check rods to adjust.
Hermetically Sealed Load Cells	Maximum protection in harsh environments.
NTEP Certified	Legal-for-Trade applications.
Industry-standard Rail Size	Seamless transition from rail to scale.

### Dimensions

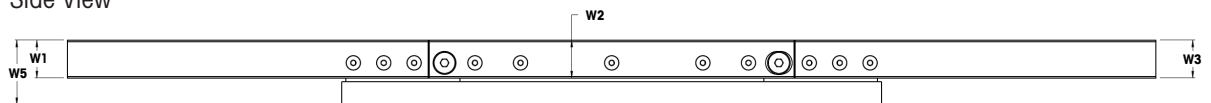
Model	Capacity	Dimensions and Locations – Inches [millimeters]													
		L1	L2	L3	L4	L5*	H1	H2	T	W1	W2	W3	W4	W5	R
24" Carbon Steel or Stainless Steel live rail	All	24.00 [610]	23.75 [603]	71.63 [1819]	35.50 [902]	24.00 [610]	7.00 [178]	3.00 [76]	0.50 [13]	2.50 [64]	2.50 [64]	2.50 [64]	1.50 [38]	4.25 [108]	0.38 [10]
48" Carbon Steel or Stainless Steel live rail	All	48.00 [1219]	23.75 [603]	95.63 [2429]	59.50 [1511]	48.00 [1219]	7.00 [178]	3.00 [76]	0.50 [13]	2.50 [64]	4.00 [102]	2.50 [64]	1.50 [38]	4.25 [108]	0.38 [10]

Top View

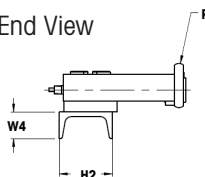
\* Standard dimension



Side View



End View



# Specifications

Standard Live Rail Lengths	2 and 4 feet (61 and 122 cm)
Available Capacities	1250 and 2500 lb (550 and 1100 kg)
Load Cell Type	Model 0757: Two 350-ohm load cells; hermetically sealed stainless steel
Material	Type 304 stainless steel or painted carbon steel
Junction Box	Precision Analog Junction Box AJB541M, stainless steel, IP65
Standard Operating Temp.	14°F to 104°F (-10°C to 40°C)
NTEP Approval	Scale: Class III, 2500d (95-144) Load Cell: Class III, 3000d (96-006)
Hazardous Area Approval	Load Cell: Factory Mutual (3013019)

## Scope of Delivery

0990 Monorail

AJB541M Precision Junction Box

## Item Numbers

61006261	Monorail 0990 CS 1.25K 24.0 inch
61005913	Monorail 0990 CS 1.25K 48.0 inch
61005908	Monorail 0990 CS 2.5K 24.0 inch
61005914	Monorail 0990 CS 2.5K 48.0 inch
69031730	Monorail 0990 SS 1.25K 24.0 inch
61037423	Monorail 0990 SS 1.25K 48.0 inch
61023593	Monorail 0990 SS 2.5K 24.0 inch
69031731	Monorail 0990 SS 2.5K 48.0 inch



### Mettler-Toledo, LLC

1900 Polaris Parkway  
Columbus, Ohio 43240  
Tel. (800) 786-0038  
(614) 438-4511  
Fax (614) 438-4900

Specifications subject to change without notice.  
© 2020 Mettler-Toledo, LLC

11/2020  
30138546

[www.mt.com](http://www.mt.com)

For more information