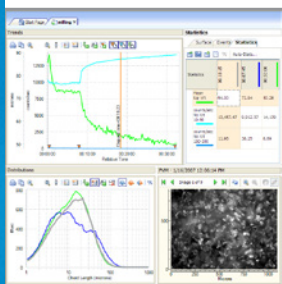
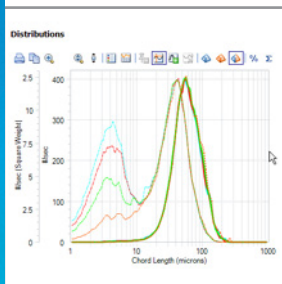


# Simply Powerful Particle System Characterization



### Enhance Understanding

Mechanisms for particle dimension and shape change can be understood and quantified with ParticleTrack using trended statistics, distributions, and ParticleView™ inline images. iC FBRM software helps chemists and engineers distill information-rich data into valuable process understanding.



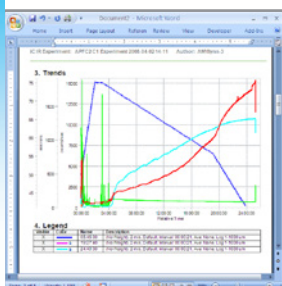
### Smart Visualization

Innovative distribution display enhances the ability to simultaneously track changing particle dimensions on the fine and coarse tails of the particle distribution. Statistics for key samples are also quantified in a tabular view that aids in understanding process dynamics.



### Optimize Conditions

Optimize batch conditions in the laboratory or during scale-up to manufacturing. Drag, drop and overlay distributions and trends from multiple time points and batches to target an endpoint particle distribution. Relate experimental conditions to particle system dynamics by importing process variables onto trended statistics.



### Reduce Data Analysis Time

Save time by preloading desired statistics, reference distributions, and user-defined trends from a previous experiment using templates. Data analysis sessions are always saved, facilitating consistent data analysis, even with interruptions. A single mouse-click creates a detailed report summarizing an entire iC FBRM experiment.



iC FBRM delivers key information that helps users develop a strong understanding of their particle system dynamics, optimize experimental design, speed development time, and quickly identify and solve production issues. Intuitive report generation features combine data from multiple ParticleTrack™ experiments with process parameters (e.g. temperature, mixing, dosing) and produce professional reports with a click of the mouse.

# Simply Powerful

## Particle System Characterization

### Easy Data Collection and Instrument Control

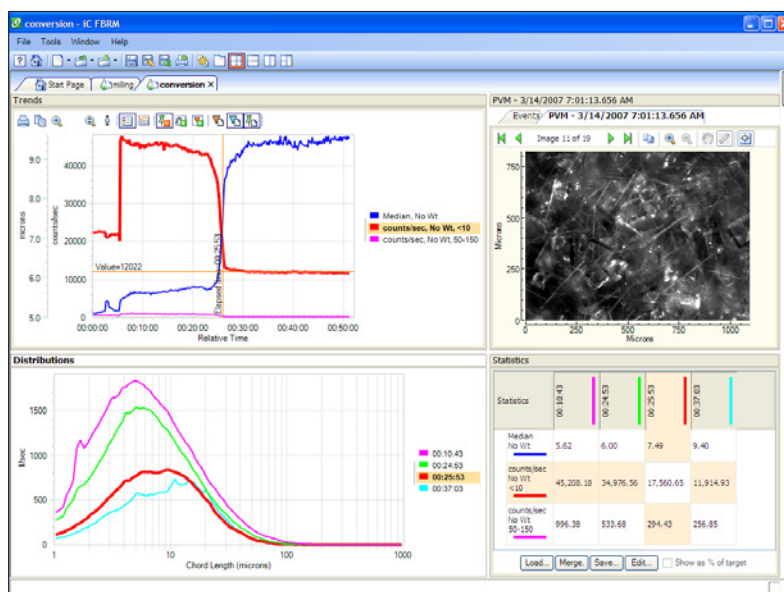
- **Templates** reuse settings from previous experiments
- **Large value display** lets users monitor key values from across the room or under the fume hood
- **Clean Window** function for auto-removal of distributions collected while cleaning the probe
- **Real-time data exchange** with other iC products helps interpret how changes to process parameters affect the particle distribution
- **Stuck particle correction** ensures quality data
- **Multiple vessel monitoring** with supported systems

### Intuitive Data Analysis and Visualization

- **Import process data** such as temperature, pH, RPM and dosing to understand mechanisms for particle size and shape change
- **Track changing particle dimensions** on the fine and coarse tails at the same time
- **Annotations** are easily added to enhance understanding and reports
- **Target an endpoint** particle distribution using drag/drop technology
- **Integrated ParticleView analysis** allows zoom, measurements and adjustment to iC PVM™ images

### Data Exchange and Quick Reporting

- **Single click report generation** produces detailed reports in Microsoft® Word® or read-only XPS format
- **Tabular Statistics Grid** summarizes statistics and process data for each critical point in a reaction
- **GAMP and 21 CFR Part 11** compatible data management
- **Simple data sharing** between iC products or with Microsoft® Word® and Excel®



## Technical Specifications

### Recommended Instrument PC Specifications

Operating System	32-bit and 64-bit versions of Microsoft® Windows® 7 and Microsoft® Windows® 8.1
CPU	Intel Core i7 Quad +
Memory	8 GB (64-bit); 4 GB (32-bit)
Hard Drive	Solid-State Disk (SSD)
Graphics	SXGA 1280 x 1024 with 3D hardware acceleration
Additional Software	Internet Explorer 11 Web Browser, Microsoft® Office 2013 and the latest version of Adobe Acrobat Reader

## Supported Hardware

### Supported Hardware

ParticleTrack™ G400, E25, and G600/G600Ex series instruments

\*Microsoft and Windows are either registered trademarks or trademarks of Microsoft Corporation in the United States and/or other countries.

Mettler-Toledo AutoChem, Inc.

7075 Samuel Morse Drive  
Columbia, MD 21046  
Phone +1 410 910 8500  
Fax +1 410 910 8600

Subject to technical changes  
© 02/2016 Mettler-Toledo, AutoChem Inc.  
Printed in Switzerland

[www.mt.com/iCFBRM](http://www.mt.com/iCFBRM)

For more information