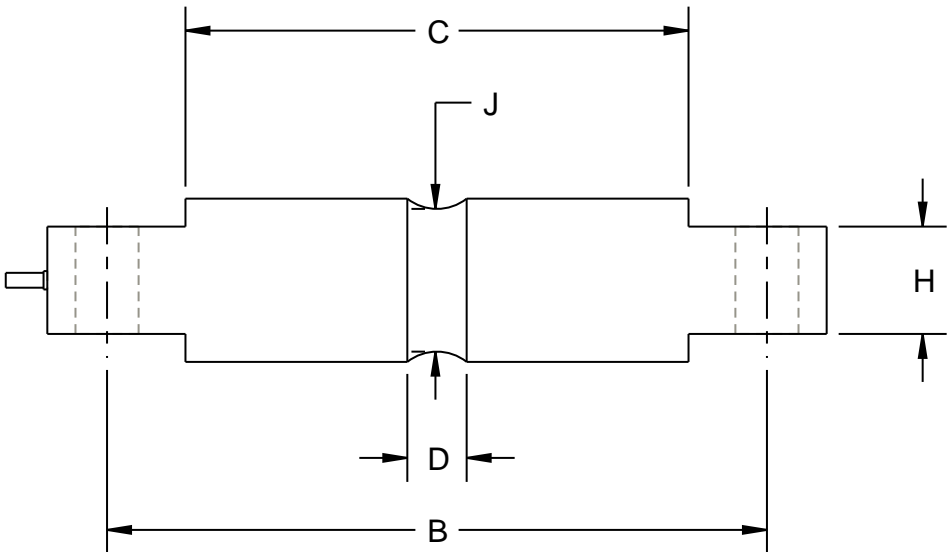


CAPACITY	A	B	C	D	E	F	G	H	J
5K-10K	8.12 [206.2]	6.87 [174.6]	5.24 [133.1]	0.62 [15.7]	1.71 [43.2]	0.5 [12.7]	0.66 [16.7]	1.12 [28.4]	1.48 [37.6]
20K	8.12 [206.2]	6.87 [174.6]	5.24 [133.1]	0.84 [21.3]	1.95 [49.5]	0.5 [12.7]	0.66 [16.7]	1.12 [28.4]	1.48 [37.6]
30-60K	10.25 [260.4]	8.5 [215.9]	6.5 [165.1]	1.0 [25.4]	3.0 [76.2]	1.0 [25.4]	1.06 [26.9]	2.37 [60.2]	2.73 [69.3]
100K	11.25 [285.8]	9.5 [241.3]	7.5 [190.5]	1.25 [31.8]	3.5 [88.9]	1.5 [38.1]	1.06 [26.9]	2.5 [63.5]	3.24 [82.3]
150K	11.25 [285.8]	9.5 [241.3]	7.5 [190.5]	1.25 [31.8]	3.9 [99.1]	1.5 [38.1]	1.06 [26.9]	2.80 [71.1]	3.64 [92.5]
200K-250K	16.10 [408.9]	13.0 [330.2]	10 [254.0]	1.30 [33.0]	5.37 [136.5]	2.0 [50.8]	1.56 [39.6]	4.60 [116.8]	5.17 [131.4]

NOTE: DIMENSIONS IN INCHES [MM]



REV	CHANGE	BY	DATE	SCALE 0.500	METTLER TOLEDO	
A	UPDATED TITL BLOCK (ADDED 431,531)	JEB	10/21/09	DATE 11/15/07		
				DRN BJE APPD JEB		
				TITLE	GENERAL DIMENSIONAL LAYOUT SLD430,431,530,531	
				UNLESS OTHERWISE SPECIFIED, ALL DIMENSIONS ARE IN INCHES, AND DIMENSIONAL TOLERANCES ARE: FRACTIONAL DECIMAL ANGULAR ±1/16 .X ±.1 X ± 1° .XX ±.02 .X ±.5° .XXX ±.005		THIS PRINT IS FURNISHED WITH THE UNDERSTANDING THAT THE ESSENCE THEREOF WILL NOT BE REPRODUCED IN WHOLE OR IN PART WITHOUT WRITTEN AUTHORIZATION OF METTLER-TOLEDO, INC. ALL DESIGNS ARE THE PROPERTY OF METTLER-TOLEDO, INC. AND WILL BE PROTECTED BY PATENTS.
					TB601441	REV A