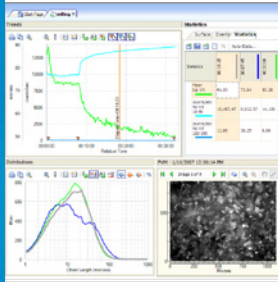
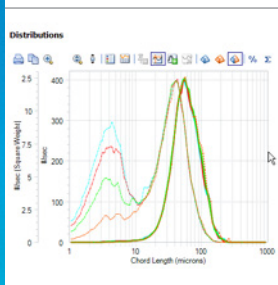


Simply Powerful Particle System Characterization



Enhance Understanding

Mechanisms for particle dimension and shape change can be understood and quantified with FBRM using trended statistics, distributions, and PVM® inline images. iC FBRM software helps chemists and engineers distill information-rich data into valuable process understanding.



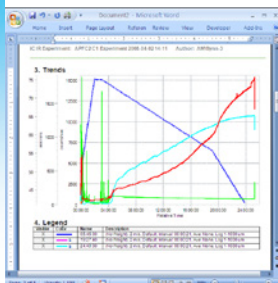
Smart Visualization

Innovative distribution display enhances the ability to simultaneously track changing particle dimensions on the fine and coarse tails of the particle distribution. Statistics for key samples are also quantified in a tabular view that aids in understanding process dynamics.



Optimize Conditions

Optimize batch conditions in the laboratory or during scale-up to manufacturing. Drag, drop, and overlay distributions and trends from multiple time points and batches to target an endpoint particle distribution. Relate experimental design conditions to particle system dynamics by importing process variables onto FBRM trended statistics.



Reduce Data Analysis Time

Save time by preloading desired statistics, reference distributions, and user-defined trends from a previous experiment using templates. Data analysis sessions are always saved facilitating consistent data analysis, even with interruptions. A single mouse-click creates a detailed report summarizing an entire iC FBRM experiment.



iC FBRM™ Software

iC FBRM delivers key information that helps users develop a strong understanding of their particle system dynamics, optimize experimental design, speed development time, and quickly identify and solve production issues. Intuitive report generation features combine data from multiple FBRM® experiments with batch condition data (e.g. temperature, mixing, dosing) and produce professional reports with a click of the mouse.

Simply Powerful

Particle System Characterization

Easy Data Collection and Instrument Control

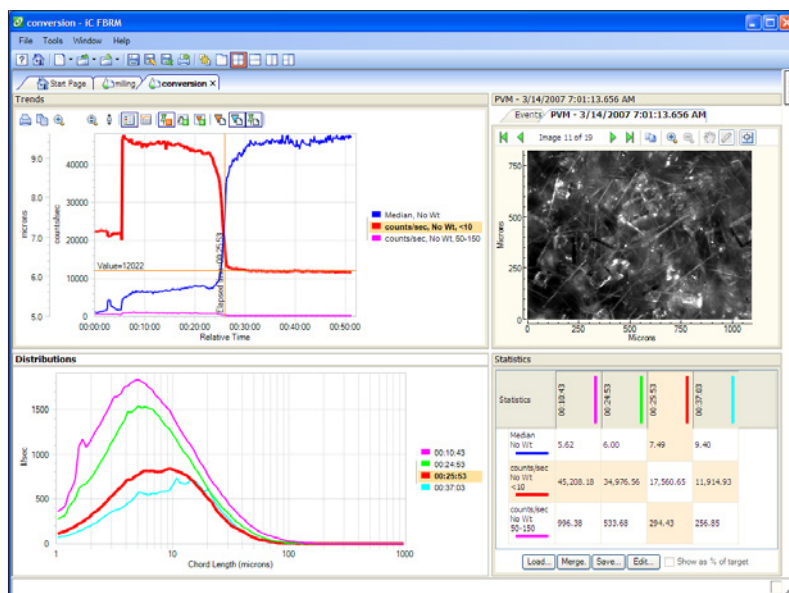
- **Templates** reuse settings from previous experiments
- **Large value display** lets users monitor key values from across the room or under the fume hood
- **Clean Window** function for auto-removal of distributions collected while cleaning the probe
- **Real-time data exchange** with other iC products help interpret how changes to parameters like heat flow and concentrations affect the particle distribution
- **Stuck particle correction** ensures quality data
- **Multiple vessel monitoring** with supported systems

Intuitive Data Analysis and Visualization

- **Import process data** such as temperature, pH, RPM and dosing to understand mechanisms for particle size and shape change
- **Track changing particle dimensions** on the fine and coarse tails at the same time
- **Annotations** are easily added to enhance understanding and reports
- **Target an endpoint** particle distribution using drag/drop technology
- **Integrated PVM analysis** allows zoom, measurements and adjustment to PVM images

Data Exchange and Quick Reporting

- **Single click report generation** produces detailed reports in Microsoft® Word® or read-only XPS format
- **Tabular Statistics Grid** summarizes statistics and process data for each critical point in a reaction
- **GAMP and 21 CFR Part 11** compatible data management
- **Simple data sharing** between iC products or with Microsoft® Word® and Excel®



Technical Specifications

| PC Requirements | FBRM D600/S400 System | ParticleTrack System |
|---------------------|---|--|
| Operating System | Microsoft® Windows® XP, Microsoft® Windows® Vista, Microsoft® Windows® 7 (32-bit only) | Microsoft® Windows® XP, Microsoft® Windows® Vista, Microsoft® Windows® 7 (32/64-bit) |
| CPU | Intel Core 2 Duo 2.2 GHz + | Intel Core i7-2720QM, 2.20GHz, 6MB Cache |
| Memory | 2 GB | 4.0 GB DDR3 SDRAM at 1333MHz |
| Hard Disk | SATA 5400 rpm | 128 GB Solid State |
| Graphics | SXGA 1280x1024 with 3D Hardware Acceleration | |
| Additional Software | Internet Explorer 8.0 Web Browser, Microsoft® Office 2003 or later and the latest version of Adobe Acrobat Reader | |

Supported Hardware

Supported Hardware

ParticleTrack™ E25, G600, G400, C35 as well as FBRM G400, G600*, S400A, S400C, D600 (except systems with CVS), C35* and most S400Q* series instruments

*Computer and hardware upgrades may be necessary

*Microsoft and Windows are either registered trademarks or trademarks of Microsoft Corporation in the United States and/or other countries.

Mettler-Toledo AutoChem, Inc.
7075 Samuel Morse Drive
Columbia, MD 21046
Phone +1 410 910 8500
Fax +1 410 910 8600

Subject to technical changes
© 04/13 Mettler-Toledo AutoChem, Inc
Printed in USA

www.mt.com/iCFBRM

For more information