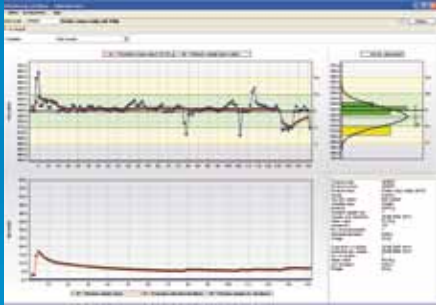


Central data capture to improve quality and profitability



Dashboard style monitoring of variables with information displayed alphanumerically and graphically for important values such as production mean values, random sample mean values or individual values of spot-checks.



Checkweigher statistical data is transferred to FreeWeigh.Net® for viewing, archiving, and reporting.



A wide array of standard reports are available to help manage processes and document performance.



### Online recording and evaluation of METTLER TOLEDO Garvens checkweigher with FreeWeigh.Net®

FreeWeigh.Net® is a powerful Windows based software package for production monitoring and documentation for pre-packaged products and fill processes.

All user input including product changes and batch activities are stored in an event log, so the course of production can be precisely tracked back and documented.

Production analysis and documentation including graphical reports can be configured by batch, hour, shift, day, week or even year to fit your standard operating procedures.

## FreeWeigh.Net®

### New dimensions in quality and process control

FreeWeigh.Net® enables production data to be centrally monitored and recorded for security, compliance, measuring quality, and ensuring processes are under control.

FreeWeigh.Net® is also compliant with the legal regulations of various countries including uniformity tests for pharmacopoeia.

FreeWeigh.Net® optimizes processes to produce higher quality products with less waste and rework to make more profits!

The user-friendly navigation has gained global acceptance thanks to the well organised screens and clear, simple structure.

Clear and comprehensive configuration of the checkweigher in FreeWeigh.Net®

### Supported features

- Transfer of in-line checkweigher automatically sampled weights and statistical data enables monitoring of production throughput, including counters and statistical data. This provides a 100% statistic analysis rather than statistical data based on off-line sampling.
- FreeWeigh.Net® contains the central product database including parameter settings required by the checkweigher. Product settings are downloaded to the checkweigher by a simple request on the checkweigher user interface.
- "Spot-check mean value" and FreeWeigh.Net® messages displayed on the weighing terminal.
- Modifications of the mean tare, throughput or density made on the weighing terminal are updated into the FreeWeigh.Net® database.
- Batch monitoring including checkweigher conveyor shut-down in the event a wrong batch setting is selected.
- The scope of spot-check can be set/modified on the checkweigher.

### Checkweigher options supported

- Successive errors detection
- Volumetric filling
- Feedback control
- Gliding limits (mean value tracking)
- Variable set-up of the sampling rate with which FreeWeigh.Net® samples weights from the checkweigher.

### Prerequisites

The METTLER TOLEDO Garvens checkweigher must be equipped with

- An XE, XS, E, or S checkweigher controller
- Checkweigher Statistics program
- At least one free serial or Ethernet TCP/IP interface port
- FreeWeigh.Net® bidirectional interface with product download

An upgrade package is available for existing checkweigher controllers to connect to FreeWeigh.Net®.

Contact METTLER TOLEDO Garvens for details.

### Your checkweigher-metal detector combination system can also be supported!

The software enables

- Record "metal counter values" within FreeWeigh.Net®
- Automatic product changeover of product-specific metal detector settings

### Network connection

FreeWeigh.Net® enables remote access to one or more checkweighers for data communication and machine management via an Ethernet TCP/IP interface.



Subject to technical changes  
©04/2009 Mettler-Toledo AG  
MarCom Industrial  
Printed in Switzerland MT-BASY 21 900 940

[www.mt.com](http://www.mt.com)

For more information