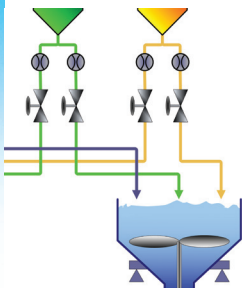
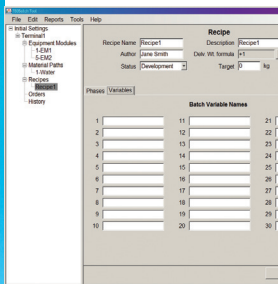


## IND780batch Controller 9215 Batchelor Replacement Solution



### Pre-engineered

Provides maximum functionality with a minimum of special configuration. It is designed to fit into and enhance many single-scale batching applications.

### Dedicated control

The Packaged IND780batch provides a stand-alone solution that can manage ten automatic materials with 2-speed feed control, as well as all of your manual materials or hand-adds.

### PC-based configuration

BatchTool 780 is a PC-based batch configuration tool that makes it easy to create master recipes and to download them to one or more terminals. 1,000 master recipes can be stored, with up to 999 material paths and 99 steps per recipe, for maximum flexibility of configuration. Configurations can be duplicated, and backed up for safe-keeping.

### Simplify your batch process

Packaged IND780batch takes the guesswork out of your batch system design by providing a pre-configured solution. Its out-of-the-box performance offers a straightforward way to take advantage of the IND780batch's powerful features.



### IND780batch Controller

The Ideal Upgrade, Ready to Install and Commission

The 9215 was discontinued ten years ago, but this batching workhorse is still an integral part of some of our customers' processes. Spare parts are no longer available. In order to avoid production loss and downtime, it's time to consider the ideal replacement. The new IND780batch controller is the optimum replacement solution for the 9215, and is available in a pre-engineered package to minimize the change-over effort. The advanced feature set provided by the IND780batch ensures increased productivity, reduces material waste, and provides an easy-to-use customer interface, including a color HMI display.

## 9215 to IND780batch Upgrade Path

### Comparison of Features

		IND780batch	9215 Batchelor	
<b>Recipe Management</b>	# of recipes	1000	99	
	# of steps per recipe	99	Total of 999 recipe lines for all recipes	
	# of materials	999, 28 can be automatic	50	
<b>Recipe Control</b>	Phase execution	Manual, Semi-Automatic, Automatic	Automatic	
	2-speed feed capability	Yes	Yes	
	Continuous batching for process applications	Yes	Yes	
	Ability to park a batch	Yes	Yes	
	Intelligent power loss recovery	Yes	Yes	
	Operator prompts/data entry	Yes	Yes	
	Recipe re-scaling	Yes	Yes	
	Timed hold points	Yes	Yes	
	Material verification	Yes	Yes	
	<b>Material Feed Control Types</b>	Spill only, gain in weight	Yes	Yes
		Spill only, loss in weight	Yes	Yes
Dump to empty		Yes	Yes	
Q.iMPACT gain in weight		Yes	No	
Q.iMPACT loss in weight		Yes	No	
Hand add		Yes	Yes	
Pre-weighed hand add		Yes	Yes	
Hand loss in weight		Yes	No	
Hand dump to empty		Yes	No	
<b>System Capability</b>		Max. # of scales	4	1
	I/O capability	Max. 40 inputs, 56 outputs	Max. 64 inputs, 64 outputs	
	PLC Interface	A-B RIO, ControlNet, EtherNet/IP, PROFIBUS, DeviceNet	None	
	PC configuration tool	BatchTool 780	DataManager	
	Security control	Multi-level user control in BatchTool 780 and IND780batch terminal	Simple password control	
	Inventory control	No	No	
	MES/ERP integration	No	No	
	User display	Color HMI graphic multi-line display	Single line Vacuum Fluorescent Display	
	Barcode scanner capability	Yes	Yes	
	<b>Reports</b>	Production reports	Yes	Yes
Audit reports		Yes	No	
Configuration reports		Yes	Yes	



**Mettler-Toledo, LLC**  
 1900 Polaris Parkway  
 Columbus, OH, U.S.A.  
 Phone +614 841 7300  
 +800 786 0038  
 Fax +614 841 0038

Subject to technical changes  
 © 06/2012 Mettler-Toledo, LLC  
 INDB0087.OE

[www.mt.com/IND780batch](http://www.mt.com/IND780batch)

For more information